



Material	6063-T5 Aluminum Alloy
Surface Finish	Anodized/Powder Coated
Lens Choices	Clear/Frosted/Milky
Internal Width	10mm/12.2mm
Stock Length	0.5-3M
Installation	Corner Mounted/ Surface Mounted

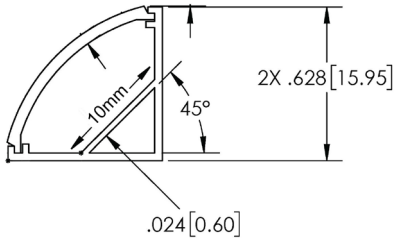
45 Degree Angle LED Aluminum Profile for LED Strip Light Corner Mounted. Square LED Aluminum Profile for LED Strip Light Surface Mounted

Model	Style	(*X) Channel	(*Y) Lens	Stock Length
AXC001-1616(*X, *Y)-2	Quarter Round	(S)Silver, (W)White, (B)Black	(C)Clear, (F)Frosted, (M)Milky	2M/6.6ft.
AXS001-1214(*X, *Y)-2	Square	(S)Silver, (W)White, (B)Black	(C)Clear, (F)Frosted, (M)Milky	2M/6.6ft.
AXS002-1707(*X, *Y)-2	Square	(S)Silver, (W)White, (B)Black	(C)Clear, (F)Frosted, (M)Milky	2M/6.6ft.
AXS001-1207(*X, *Y)-2	Square	(S)Silver, (W)White, (B)Black	(C)Clear, (F)Frosted, (M)Milky	2M/6.6ft.
AXS001-2310(*X, *Y)-2	Square	(S)Silver, (W)White, (B)Black	(C)Clear, (F)Frosted, (M)Milky	2M/6.6ft.

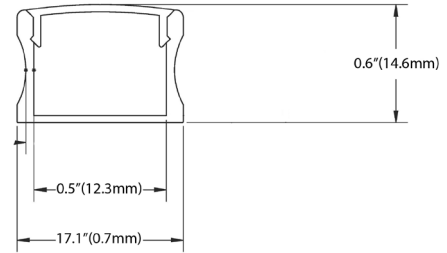
MODEL SPECIFICATIONS

MODEL	DIMENSIONS
AXCOO1-1616(*X, *Y)-2	0.6”(16mm) x 0.6”(16mm)
AXS001-1214(*X, *Y)-2	0.7”(17.1mm) x 0.6”(14.6mm)
AXS002-1707(*X, *Y)-2	0.69”(17.4mm) x 0.30”(7.50mm)
AXS001-1207(*X, *Y)-2	0.47”(12mm) x 0.28”(7mm)
AXS001-2310(*X, *Y)-2	0.9”(23mm) x 0.04”(10mm)

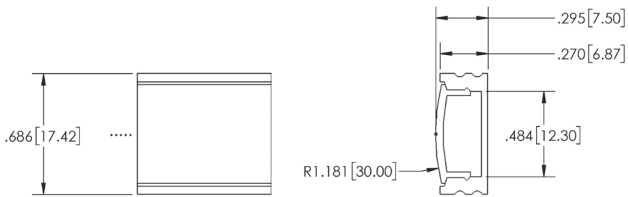
AXC001-1616-2 (Quarter round)



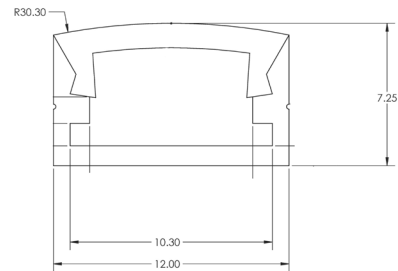
AXS001-1214-2 (Square)



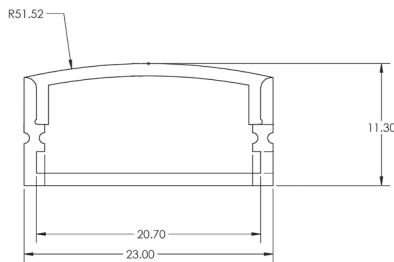
AXS002-1707-2 (Square)



AXS001-1207-2 (Square)



AXS001-2310-2 (Square)



ACCESSORIES

MODEL	TYPE
MC001-1214S	Mounting clip, Square, Silver
MC001-1616S	Mounting clip, Quarter round, Silver
MC001-1616B	Mounting clip, Quarter round, Black
EC001-1214S	End cap set, square, Silver
EC001-1616B	End cap set, Quarter round, Black
CL001-1214F	L corner connector, Square, Frosted
CL001-1616F	L corner connector, Quarter round, Frosted
CL001-1616B	L corner connector, Quarter round, Black

MC001-1214S



MC001-1616S



MC001-1616B



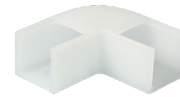
EC001-1214S



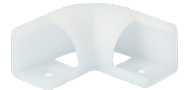
EC001-1616B



CL001-1214F



CL001-1616F

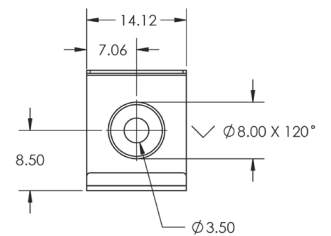
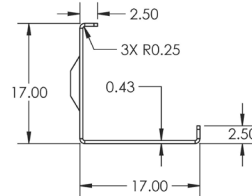
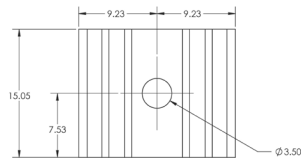
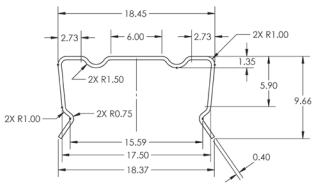


CL001-1616B

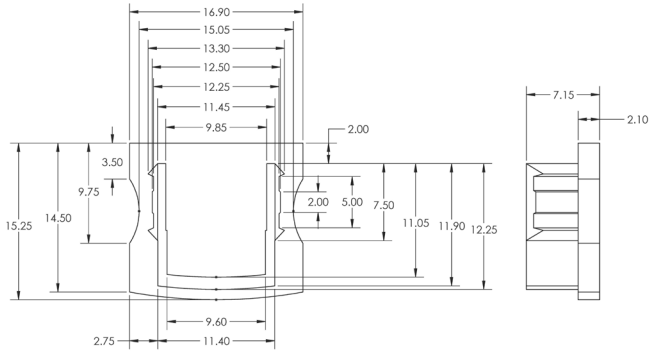


MC001-1214

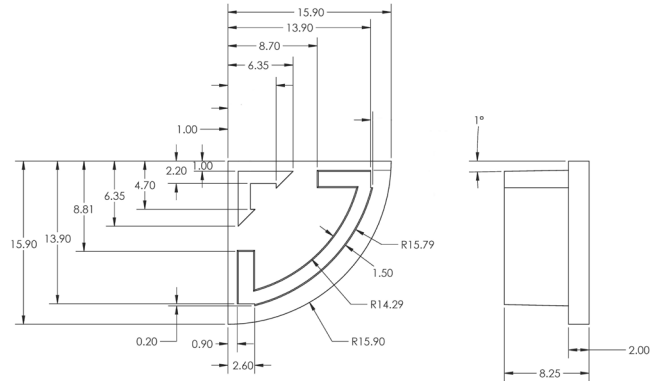
MC001-1616



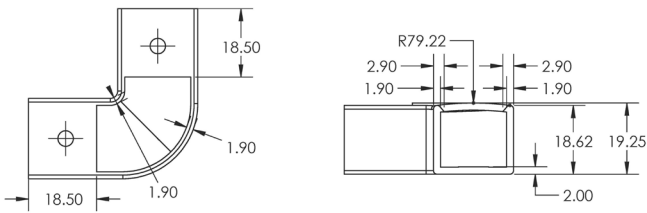
EC001-1214



EC001-1616



CL001-1214



CL001-1616

