

# T8

## 12T8/COR/48-840/MF18/G/DIM 25/1

Our TLEDs are available in InstantFit (Type A / Type C) or MainsFit (Ballast bypass / Type B) versions. The InstantFit lamps work on a broad variety of ballasts and LED drivers. Only InstantFit has over 15,000 lamp & ballast combinations delivering even light output, energy savings and a long lifetime. Our MainsFit products feature a double-ended design, simplifying installation while a proprietary safety circuit minimizes a shock risk. Lamp sizes range from 2-foot to 8-foot and U-bend with a variety of lumen outputs.

### Product data

General information		Electrical	
Base	G13 [ Medium Bi-Pin Fluorescent]	Power (Rated) (Nom)	12 W
EU RoHS compliant	Yes	Lamp Current (Max)	104 mA
Nominal Lifetime (Nom)	50000 h	Lamp Current (Min)	48 mA
Switching Cycle	50000X	Starting Time (Nom)	0.5 s
Tier	CorePro	Warm Up Time to 60% Light (Nom)	0.5 s
Light technical		UL Type	TLED_Type B; UL classified double end
Color Code	841 [ CCT of 4100K (841)]	Power Factor (Nom)	0.9
Beam Angle (Nom)	240 °	Voltage (Nom)	120-277 V
Initial lumen (Nom)	1800 lm	Temperature	
Color Designation	Cool White (CW)	T-Ambient (Max)	113 °F
Correlated Color Temperature (Nom)	4000 K	T-Ambient (Min)	-4 °F
Luminous Efficacy (rated) (Nom)	150.00 lm/W	T-Storage (Max)	149 °F
Color Consistency	6SCDM	T-Storage (Min)	-40 °F
Color Rendering Index (Nom)	80	T-Case Maximum (Nom)	158 °F
LLMF At End Of Nominal Lifetime (Nom)	70 %	Controls and dimming	
Operating and electrical		Dimmable	Only with specific dimmers
Input Frequency	50 to 60 Hz		

# T8

## Mechanical and housing

Bulb Finish	Frosted
Bulb Material	Glass
Product Length	47-1/4 in
Bulb Shape	Tube, double-ended

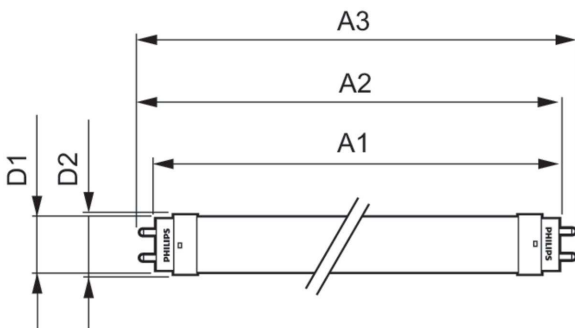
## Approval and application

Energy Saving Product	Yes
Approval Marks	RoHS compliance UL certificate DLC compliance

## Product data

Order product name	12T8/COR/48-840/MF18/G/DIM 25/1
EAN/UPC - Product	046677579388
Order code	579383
Numerator - Quantity Per Pack	1
Numerator - Packs per outer box	25
Material Nr. (12NC)	929003524304
Net Weight (Piece)	0.441 lb
Model Number	9290035243

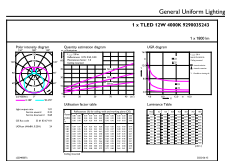
## Dimensional drawing



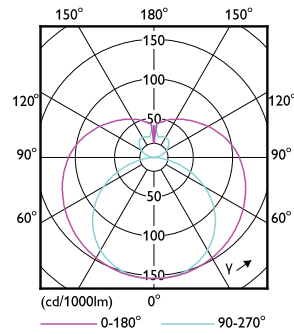
12T8/COR/48-840/MF18/G/DIM 25/1

Product	D1	D2	A1	A2	A3
12T8/COR/48-840/MF18/G/DIM 25/1	1-1/16 in	1-1/8 in	47-3/16 in	47-1/2 in	47-3/4 in

## Photometric data

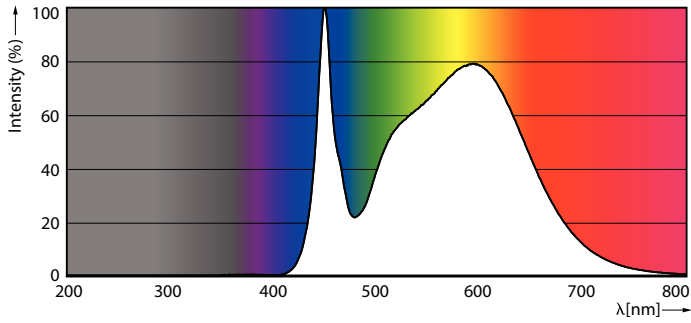


General uniform lighting



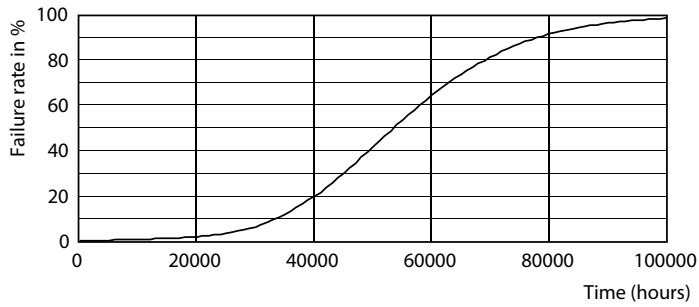
Light Distribution Diagram

Photometric data

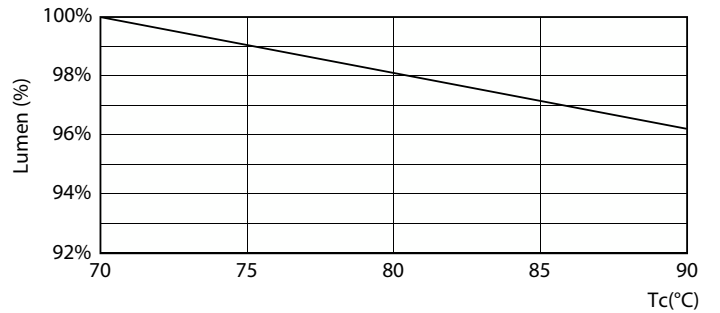


Spectral Power Distribution Colour

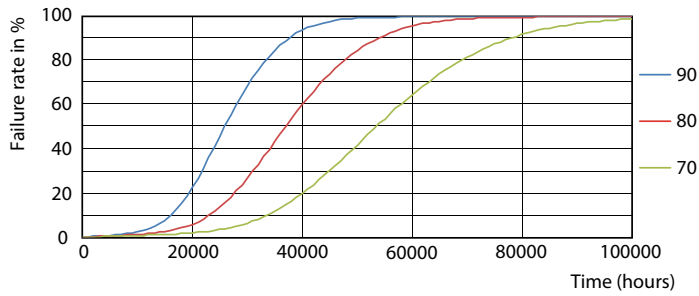
Lifetime



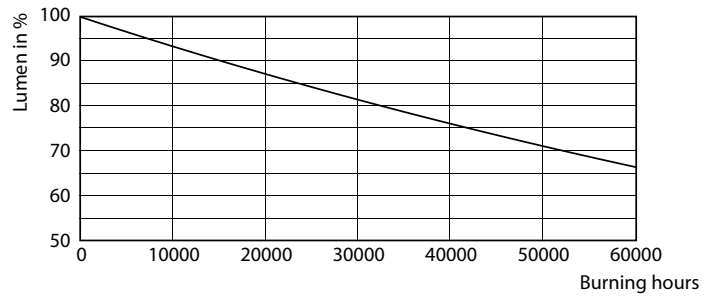
Life Expectancy Diagram



LumenVsTc



FailureRate



Lumen Maintenance Diagram

# T8

## Lifetime



LifetimeVsTc

