



CorePro MainsFit (UL Type-B) T8

14.5T8/COR/48-5CCT/MF18/G/DIM 25/1

The CorePro MainsFit (UL Type B) lamps are designed to be the perfect retrofit solution to move from traditional fluorescent lamps to energy saving LEDs. This ballast bypass lamp has everything needed built into the lamp with proven energy savings, long life (up to 50k hours), surge suppression and industry leading safety features. All lamps in the CorePro MainsFit family are double-ended to help simplify the installation. In addition, all lamps meet the Philips standards for light quality so that end users will be in a comfortable environment regardless of the CorePro MainsFit lamp type.

Product data

General Information		LLMF At End Of Nominal Lifetime (Nom) 70 %	
Cap-Base	G13 [Medium Bi-Pin Fluorescent]		
Nominal lifetime	50,000 hour(s)		
Switching Cycle	50,000		
Lighting Technology	LED		
EU RoHS compliant	Yes		
Light Technical		Operating and Electrical	
Color Code	3000K/3500K/4000K/5000K/6500K	Line Frequency	50 to 60 Hz
Beam Angle (Nom)	240 degree(s)	Input Frequency	50 to 60 Hz
Luminous Flux	1,800 lm	Power Consumption	14.5 W
Color Designation	3000K/3500K/4000K/5000K/6500K	Lamp Current (Max)	125 mA
Correlated Color Temperature (Nom)	Selectable 3000 3500 4000 5000 6500 K	Lamp Current (Min)	58 mA
Luminous Efficacy (rated) (Nom)	124.00 lm/W	Wattage Equivalent	32 W
Color Consistency	6SCDM	Starting Time (Nom)	0.5 s
Color rendering index (CRI)	80	Warm-up time to 60% light	0.5 s
		Power Factor (Fraction)	0.9
		Voltage (Nom)	120-277 V
		UL Type	UL Type B
		Temperature	
		Ambient temperature range	-4 to +113 °F

CorePro MainsFit (UL Type-B) T8

T-Case Maximum (Nom)	158 °F
Controls and Dimming	
Dimmable	Only with specific dimmers
Mechanical and Housing	
Bulb Finish	Frosted
Bulb Material	Glass
Product Length	47-1/4 inch
Bulb Shape	T8
Approval and Application	
Energy Saving Product	Yes
Approval Marks	RoHS compliance UL certificate DLC compliance

Application Conditions

can it be used in closed luminaires	Yes
-------------------------------------	-----

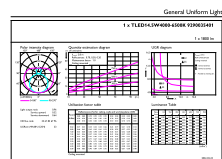
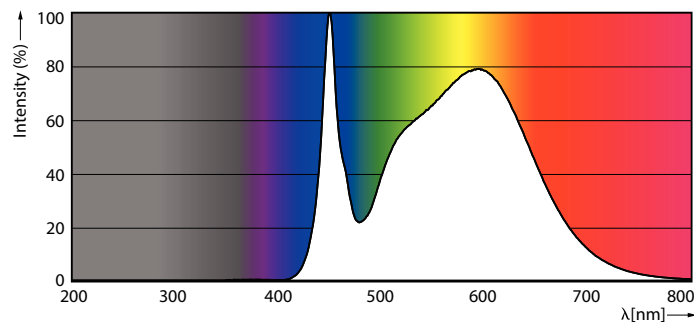
Product Data

Order product name	14.5T8/COR/48-5CCT/MF18/G/DIM 25/1
Full product name	14.5T8/COR/48-5CCT/MF18/G/DIM 25/1
Order code	579672
Material Nr. (12NC)	929003540104
Numerator - Quantity Per Pack	1
EAN/UPC - Product/Case	046677579678
Numerator - Packs per outer box	25
EAN/UPC - Case	50046677579673

Dimensional drawing

Product	D1	D2	A1	A2	A3
14.5T8/COR/48-5CCT/MF18/G/DIM 25/1	1-1/16 inch	1-1/8 inch	47-3/16 inch	47-1/2 inch	47-3/4 inch

Photometric data

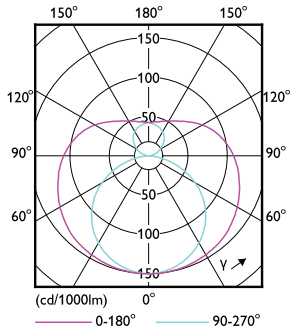


Spectral Power Distribution Colour - 14.5T8/COR/48-5CCT/MF18/G/DIM 25/1

General uniform lighting - 14.5T8/COR/48-5CCT/MF18/G/DIM 25/1

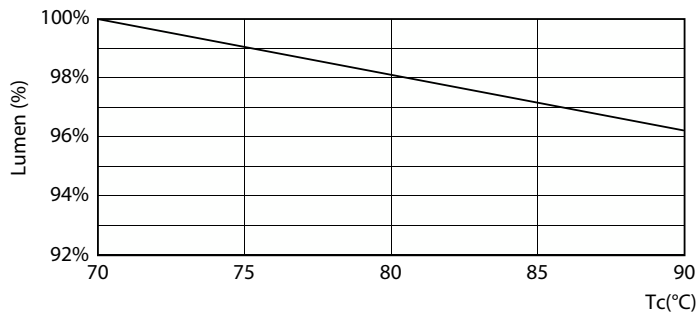
CorePro MainsFit (UL Type-B) T8

Photometric data

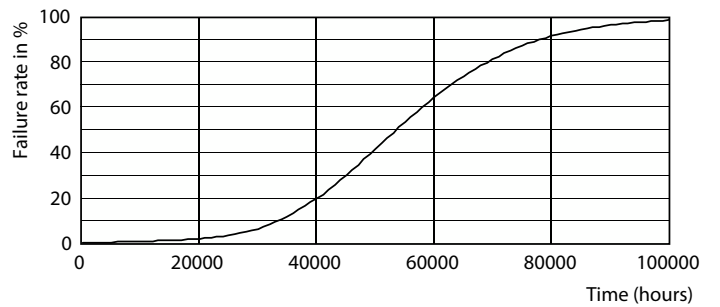


Light Distribution Diagram - 14.5T8/COR/48-5CCT/MF18/G/DIM 25/1

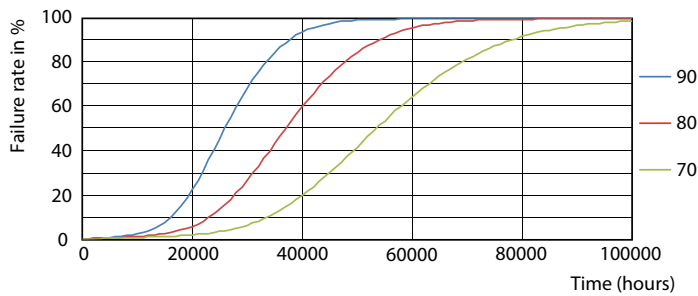
Lifetime



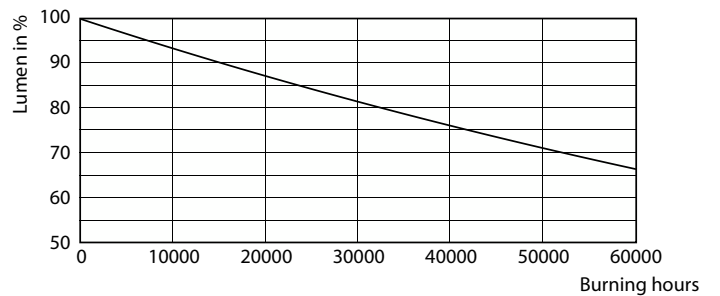
Lumen Maintenance Diagram - 14.5T8/COR/48-5CCT/MF18/G/DIM 25/1



Life Expectancy Diagram - 14.5T8/COR/48-5CCT/MF18/G/DIM 25/1



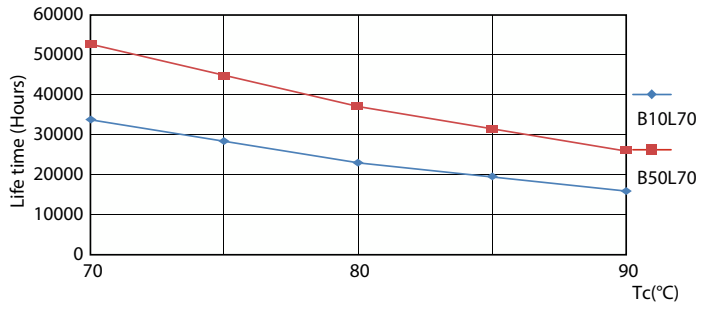
Life Expectancy Diagram - 14.5T8/COR/48-5CCT/MF18/G/DIM 25/1



Lumen Maintenance Diagram - 14.5T8/COR/48-5CCT/MF18/G/DIM 25/1

CorePro MainsFit (UL Type-B) T8

Lifetime



Life Expectancy Diagram - 14.5T8/COR/48-5CCT/MF18/G/DIM 25/1

