



T8

14.5T8/MAS/48-850/MF21/P/DIM 25/1

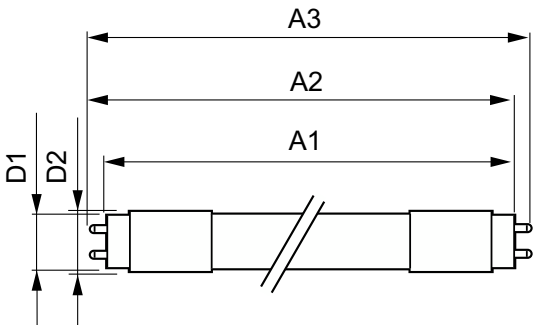
Our TLEDs are available in InstantFit (Type A / Type C) or MainsFit (Ballast bypass / Type B) versions. The InstantFit lamps work on a broad variety of ballasts and LED drivers. Only InstantFit has over 15,000 lamp & ballast combinations delivering even light output, energy savings and a long lifetime. Our MainsFit products feature a double-ended design, simplifying installation while a proprietary safety circuit minimizes a shock risk. Lamp sizes range from 2-foot to 8-foot and U-bend with a variety of lumen outputs.

Product data

General information		Power (Rated) (Nom)		14.5 W
Base	G13 [Medium Bi-Pin Fluorescent]	Lamp Current (Max)	125 mA	
EU RoHS compliant	Yes	Lamp Current (Min)	58 mA	
Nominal Lifetime (Nom)	70000 h	Starting Time (Nom)	0.5 s	
Switching Cycle	50000X	Warm Up Time to 60% Light (Nom)	0.5 s	
Tier	MasterClass	UL Type	TLED_Type B; UL classified double end	
Light technical		Power Factor (Nom)	0.9	
Color Code	850 [CCT of 5000K]	Voltage (Nom)	120-277 V	
Beam Angle (Nom)	180 °	Temperature		
Initial lumen (Nom)	2100 lm	T-Ambient (Max)	113 °F	
Color Designation	Daylight	T-Ambient (Min)	-4 °F	
Correlated Color Temperature (Nom)	5000 K	T-Storage (Max)	149 °F	
Luminous Efficacy (rated) (Nom)	144.00 lm/W	T-Storage (Min)	-40 °F	
Color Consistency	<5	T-Case Maximum (Nom)	158 °F	
Color Rendering Index (Nom)	80	Controls and dimming		
LLMF At End Of Nominal Lifetime (Nom)	70 %	Dimmable	Only with specific dimmers	
Operating and electrical				
Input Frequency	50 to 60 Hz			

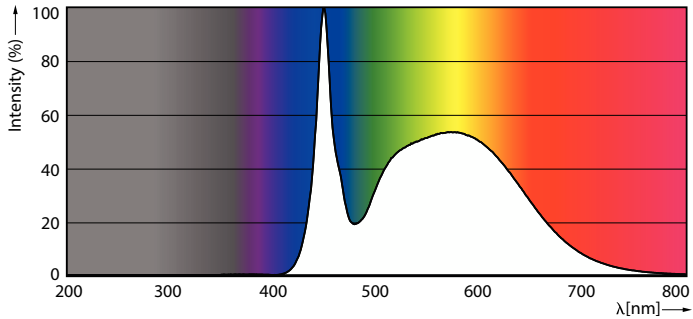
Mechanical and housing	
Bulb Finish	Frosted
Bulb Material	Glass
Product Length	48 in
Bulb Shape	Tube, double-ended
Approval and application	
Energy Saving Product	Yes
Approbation Marks	RoHS compliance UL certificate DLC compliance

Dimensional drawing



14.5T8/MAS/48-850/MF21/P/DIM 25/1

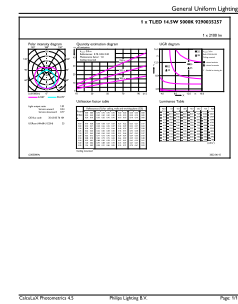
Photometric data



Spectral Power Distribution Colour

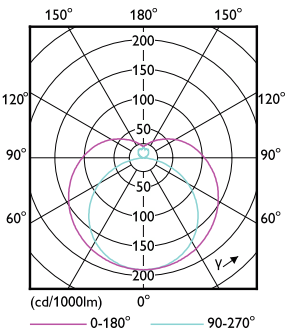
Product data	
Order product name	14.5T8/MAS/48-850/MF21/P/DIM 25/1
EAN/UPC - Product	046677579500
Order code	579508
Numerator - Quantity Per Pack	1
Numerator - Packs per outer box	25
Material Nr. (12NC)	929003525704
Net Weight (Piece)	0.463 lb
Model Number	9290035257

Product	D1	D2	A1	A2	A3
14.5T8/MAS/48-850/ MF21/P/DIM 25/1	1-1/16 in	1-1/8 in	47-3/16 in	47-1/2 in	47-3/4 in



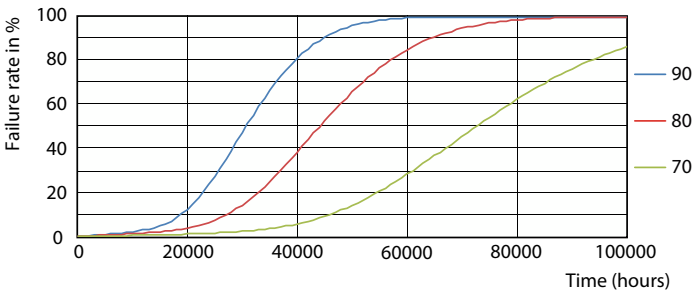
General uniform lighting

Photometric data

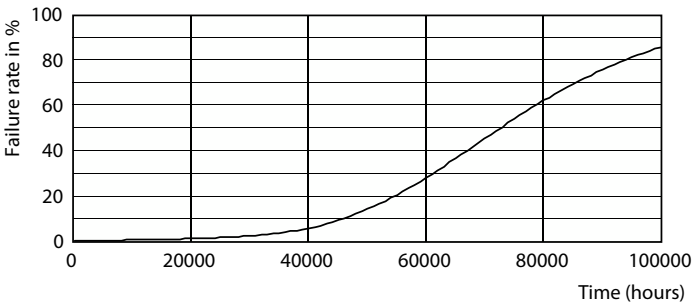


Light Distribution Diagram

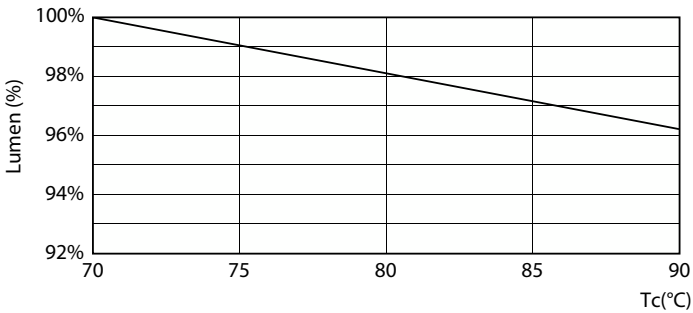
Lifetime



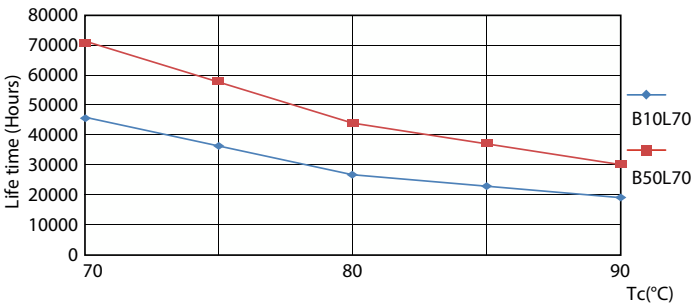
FailureRate



Life Expectancy Diagram

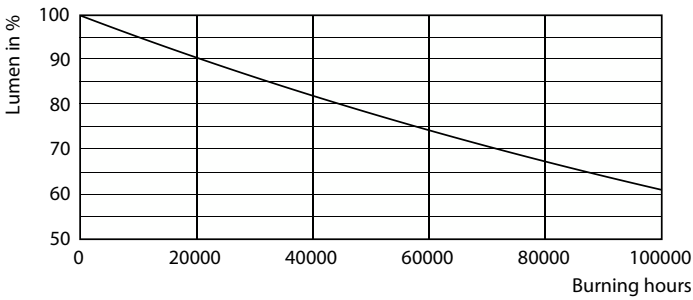


LumenVsTc



LifetimeVsTc

Lifetime



Lumen Maintenance Diagram

