



# InstantFit (UL Type-A) T5

14T5HE/46-840/IF21/G/DIM 10/1

CorePro, LED, T5, 14 W, 4000 K, 2100 lm, 50000 hour(s)

The InstantFit TLED lamps provide hassle-free installation with simple lamp-for-lamp replacements. They deliver what we promise, with at least 40% energy savings, flicker-free performance, and the life you would expect. Other lamps claim compatibility but only InstantFit (UL Type-A) has been proven to work with over 200 ballasts and drivers, delivering even light output, with proven energy savings and a long average lifetime. End users will be delighted being under these comfortable and high quality InstantFit lamps with no visible flicker and optimized optics. Energy managers will enjoy the InstantFit lamps too as they can count the savings delivered by our lamps. To enjoy more energy savings, the InstantFit lamps can be paired with the Advance TLED drivers to create a Type C system.

## Product data

General Information		Operating and Electrical	
Cap-Base	G5	Luminous Efficacy (rated) (Nom)	150.00 lm/W
Nominal lifetime	50,000 hour(s)	Color Consistency	<6
Switching Cycle	50,000	Color rendering index (CRI)	82
Lighting Technology	LED	LLMF At End Of Nominal Lifetime (Nom)	70 %
Light Technical		Line Frequency	40000-110000 Hz
Color Code	840 [CCT of 4000K]	Input Frequency	40000-110000 Hz
Beam Angle (Nom)	200 degree(s)	Power Consumption	14 W
Luminous Flux	2,100 lm	Lamp Current (Max)	350 mA
Color Designation	Cool White (CW)	Lamp Current (Min)	150 mA
Correlated Color Temperature (Nom)	4000 K	Wattage Equivalent	28 W

# InstantFit (UL Type-A) T5

Starting Time (Nom)	0.5 s
Warm-up time to 60% light	0.5 s
Power Factor (Fraction)	0.9
Voltage (Nom)	70-105 V
UL Type	UL Type A

## Temperature

T-Case Maximum (Nom)	158 °F
----------------------	--------

## Controls and Dimming

Dimmable	Yes
----------	-----

## Mechanical and Housing

Bulb Finish	Frosted
Bulb Material	Glass
Product Length	47-1/4 inch
Bulb Shape	T5
Net Weight (Piece)	0.322 lb

## Approval and Application

Energy Saving Product	Yes
-----------------------	-----

Approval Marks	UL certificate RoHS compliance DLC compliance
Energy Certifications	DLC Standard
EU RoHS compliant	Yes
Ambient temperature range	-4 °F to 113 °F

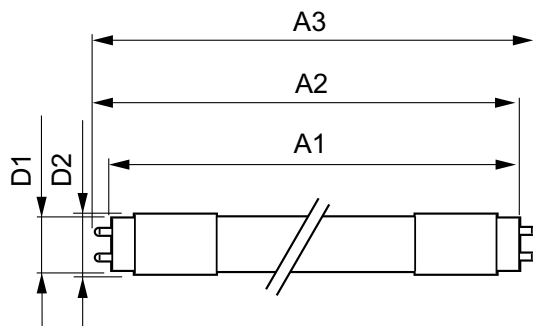
## Application Conditions

can it be used in closed luminaires	Yes
-------------------------------------	-----

## Product Data

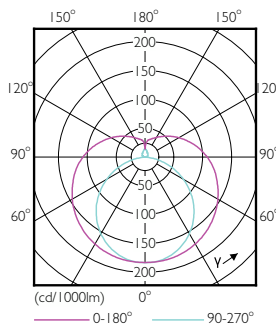
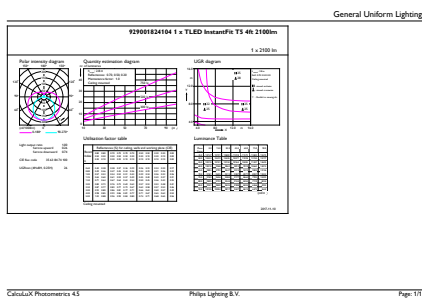
Order product name	14T5HE/46-840/IF21/G/DIM 10/1
Full product name	14T5HE/46-840/IF21/G/DIM 10/1
Order code	476515
Material Nr. (12NC)	929001824104
Numerator - Quantity Per Pack	1
EAN/UPC - Product/Case	046677476519
Numerator - Packs per outer box	10
EAN/UPC - Case	50046677476514

## Dimensional drawing



Product	D1	D2	A1	A2	A3
14T5HE/46-840/IF21/G/DIM 10/1	5/8 inch	3/4 inch	45-3/16 inch	45-1/2 inch	45-3/4 inch

## Photometric data

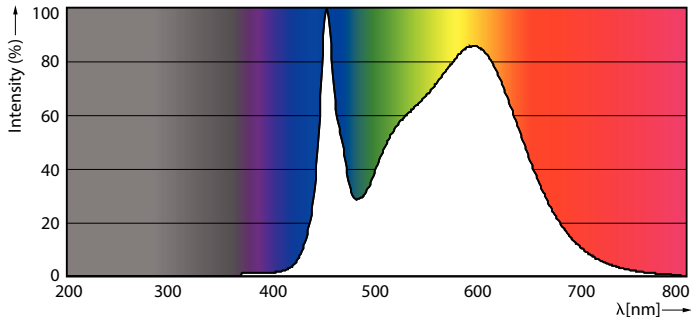


General uniform lighting - 14T5HE/46-840/IF21/G/DIM 10/1

Light Distribution Diagram - 14T5HE/46-840/IF21/G/DIM 10/1

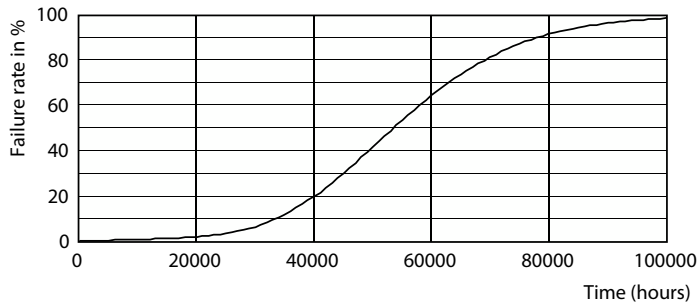
# InstantFit (UL Type-A) T5

## Photometric data

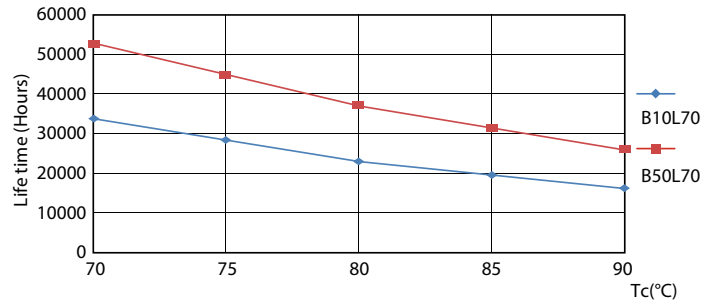


Spectral Power Distribution Colour - 14T5HE/46-840/IF21/G/DIM 10/1

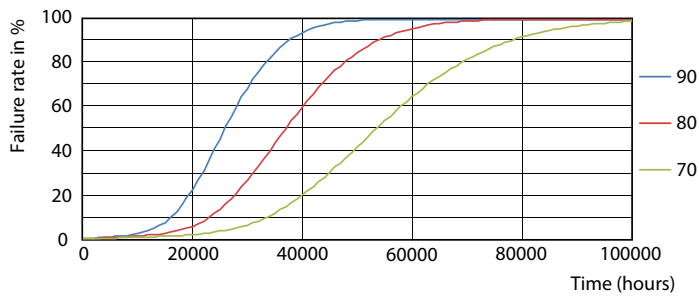
## Lifetime



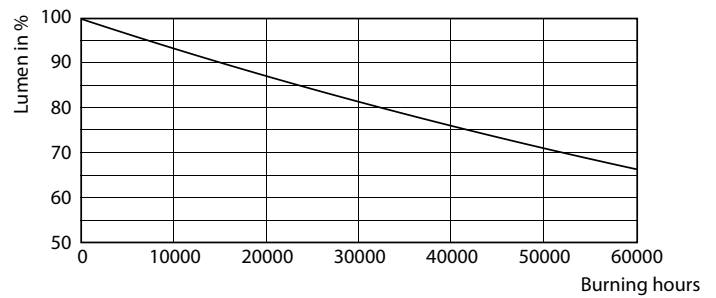
LEDtube 8-14W G5 830-850 200D DIM IF10-21



LEDtube 8-14W G5 830-850 200D DIM IF10-21



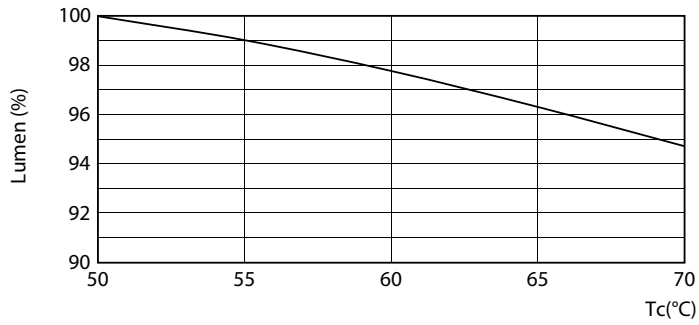
LEDtube 8-14W G5 830-850 200D DIM IF10-21



Lumen Maintenance Diagram - 14T5HE/46-840/IF21/G/DIM 10/1

## InstantFit (UL Type-A) T5

### Lifetime



Lumen Maintenance Diagram - 14T5HE/46-840/IF21/G/DIM 10/1

