



Corepro InstantFit (UL Type-A) T8

14T8/COR/48-850/IF21/G/DIM 10/1

The CorePro InstantFit LED lamps provide hassle-free installation with simple lamp-for-lamp replacements. They deliver what we promise, with at least 40% energy savings, flicker-free performance, and the life you would expect. Other lamps claim compatibility but only CorePro InstantFit (UL Type A) has been proven to work with over 200 ballasts and drivers, delivering even light output, with proven energy savings and a long average lifetime. End users will be delighted being under these comfortable and high quality CorePro InstantFit lamps with no visible flicker and optimized optics. Energy managers will enjoy these lamps too as they can count the savings delivered by our lamps. To enjoy more energy savings, the CorePro InstantFit lamps can be paired with the Advance TLED drivers to create a Type C system.

Product data

General Information		Color rendering index (CRI)		82
Cap-Base	G13 [Medium Bi-Pin Fluorescent]	LLMF At End Of Nominal Lifetime (Nom)		70 %
Nominal lifetime	70,000 hour(s)	Operating and Electrical		
Switching Cycle	50,000	Line Frequency	25000-105000 Hz	
Lighting Technology	LED	Input Frequency	25000-105000 Hz	
Light Technical		Power Consumption	14 W	
Color Code	850 [CCT of 5000K]	Lamp Current (Max)	260 mA	
Beam Angle (Nom)	240 degree(s)	Lamp Current (Min)	100 mA	
Luminous Flux	2,100 lm	Wattage Equivalent	32 W	
Color Designation	Daylight	Starting Time (Nom)	0.5 s	
Luminous Efficacy (rated) (Nom)	150.00 lm/W	Warm-up time to 60% light	0.5 s	
Correlated Color Temperature (Nom)	5000 K	Power Factor (Fraction)	0.9	
Color Consistency	<5	Voltage (Nom)	120-277, 347 V	

Corepro InstantFit (UL Type-A) T8

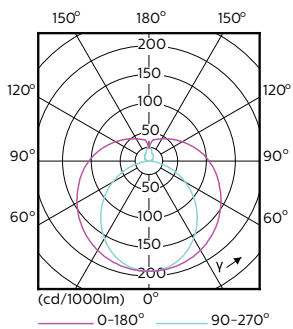
UL Type	UL Type A
Temperature	
Ambient temperature range	-4 °F to 113 °F
T-Case Maximum (Nom)	122 °F
Controls and Dimming	
Dimmable	Yes
Mechanical and Housing	
Bulb Finish	Frosted
Bulb Material	Glass
Product Length	47-1/4 inch
Bulb Shape	T8
Approval and Application	
Energy Saving Product	Yes
Approval Marks	UL certificate RoHS compliance DLC compliance

Energy Consumption kWh/1000 h	- kWh
Energy Certifications	DLC Standard
EU RoHS compliant	Yes
Application Conditions	
can it be used in closed luminaires	Yes
Product Data	
Order product name	14T8/COR/48-850/IF21/G/DIM 10/1
Full product name	14T8/COR/48-850/IF21/G/DIM 10/1
Order code	470120
Material Nr. (12NC)	929001343334
Numerator - Quantity Per Pack	1
Net Weight (Piece)	0.474 lb
EAN/UPC - Product/Case	046677452483
Numerator - Packs per outer box	10
EAN/UPC - Case	50046677470123

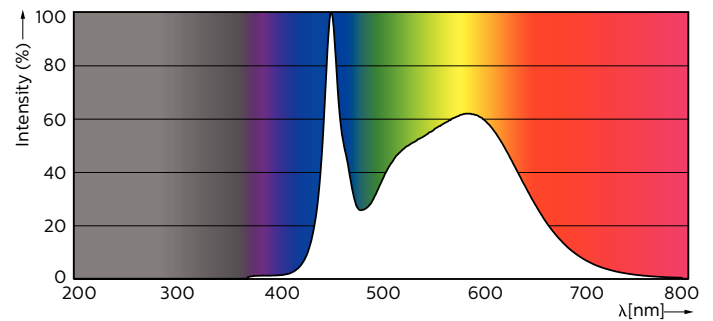
Dimensional drawing

Product	D1	D2	A1	A2	A3
14T8/COR/48-850/IF21/G/DIM 10/1	1-1/16 inch	1-1/8 inch	47-3/16 inch	47-1/2 inch	47-3/4 inch

Photometric data



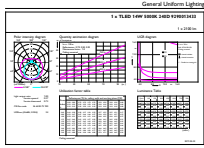
Light Distribution Diagram - 14T8/COR/48-850/IF21/G/DIM 10/1



Spectral Power Distribution Colour - 14T8/COR/48-850/IF21/G/DIM 10/1

Corepro InstantFit (UL Type-A) T8

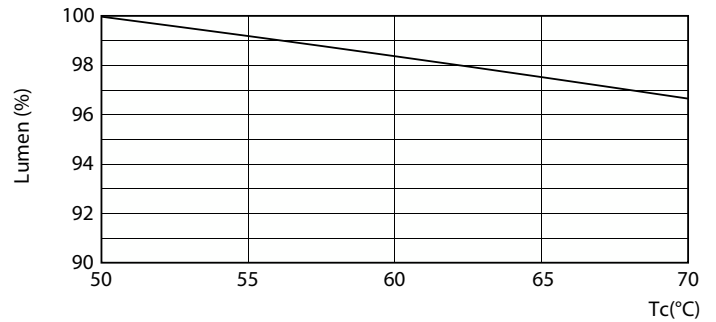
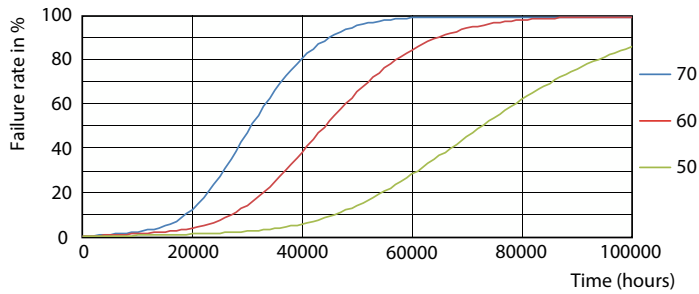
Photometric data



General Uniform Lighting - 14T8/COR/48-850/IF21/G/DIM 10/1

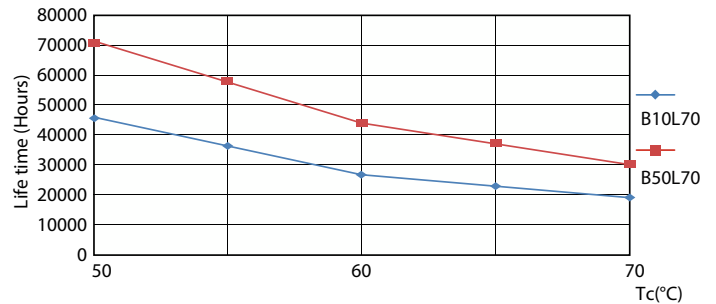
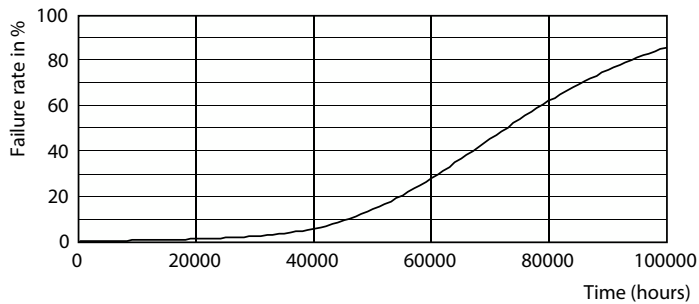
General uniform lighting - 14T8/COR/48-850/IF21/G/DIM 10/1

Lifetime



LEDtube 70K 5070 FailureRate-LED

Lumen Maintenance Diagram - 14T8/COR/48-850/IF21/G/DIM 10/1

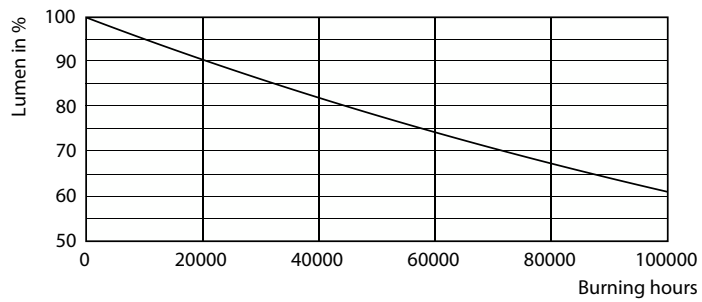


Life Expectancy Diagram

LEDtube 70K 5070 LifetimeVsTc-LED

Corepro InstantFit (UL Type-A) T8

Lifetime



Lumen Maintenance Diagram - 14T8/COR/48-850/IF21/G/DIM 10/1

