



FlexFit (Hybrid UL Type A + B) T8

15T8-1U/COR/24-5CCT/FF22/G 10/1

CorePro, LED, T8-1U, 11.5 W, 13 W, 15 W, 3000 K, 3500 K, 4000 K, 5000 K, 6500 K, 1800 lm, 2000 lm, 2200 lm, 50000 hour(s)

Philips FlexFit (Hybrid UL Type A + B) lamps are designed with the customer in mind for installation flexibility. The FlexFit lamp can operate as both a plug and play (UL Type-A) and double-ended direct wire (UL Type-B). As with all Philips products, the FlexFit family of lamps are compatible with more ballasts than any manufacturer giving the customer peace of mind during installation. Additionally, the long life (50K hours) delivers reduced maintenance and replacement costs. If the ballast should fail, simply cut the ballast from the system and wire the tube directly to line voltage (120-277V)!

Product data

General Information		Color Consistency	
Cap-Base	2G13	Color Consistency	<6
Nominal lifetime	50,000 hour(s)	Color rendering index (CRI)	80
Switching Cycle	50,000	LLMF At End Of Nominal Lifetime (Nom)	70 %
Lighting Technology	LED	Operating and Electrical	
Light Technical		Input Frequency	50 to 60 Hz
Color Code	3000K/3500K/4000K/5000K/6500K	Power Consumption	11.5 13 15 W
Beam Angle (Nom)	150 degree(s)	Lamp Current (Max)	192 mA
Luminous Flux	1,800 2,000 2,200 lm	Lamp Current (Min)	148 mA
Color Designation	3000K/3500K/4000K/5000K/6500K	Wattage Equivalent	31 W
Correlated Color Temperature (Nom)	3000 3500 4000 5000 6500 K	Starting Time (Nom)	0.5 s
Luminous Efficacy (rated) (Nom)	146 lm/W	Warm-up time to 60% light	0.9 s
		Power Factor (Fraction)	0.9

FlexFit (Hybrid UL Type A + B) T8

Voltage (Nom)	120-277 V
UL Type	UL Type A+B

Temperature

T-Case Maximum (Nom)	122 °F
----------------------	--------

Controls and Dimming

Dimmable	Limited
----------	---------

Mechanical and Housing

Bulb Finish	Frosted
Bulb Material	Glass
Product Length	23-5/8 inch
Bulb Shape	T8-1U
Net Weight (Piece)	0.5 lb

Approval and Application

Energy Saving Product	Yes
Approval Marks	RoHS compliance UL certificate DLC compliance

EU RoHS compliant	Yes
Ambient temperature range	-4 to +113 °F

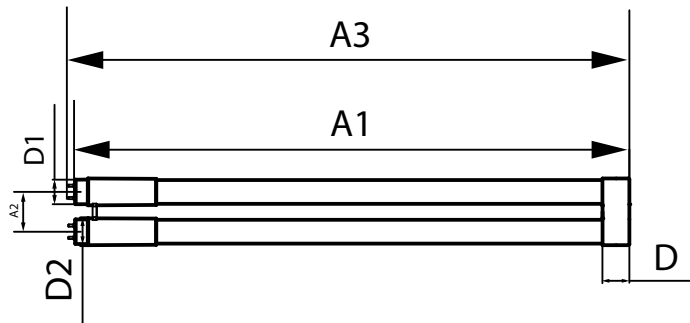
Application Conditions

can it be used in closed luminaires	Yes
-------------------------------------	-----

Product Data

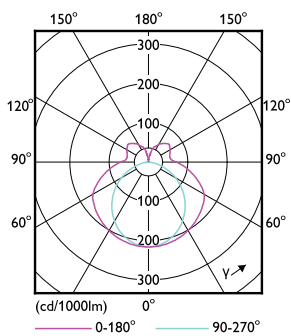
Order product name	15T8-1U/COR/24-5CCT/FF22/G 10/1
Full product name	15T8-1U/COR/24-5CCT/FF22/G 10/1
Order code	606150
Material Nr. (12NC)	929004257834
Numerator - Quantity Per Pack	1
EAN/UPC - Product/Case	046677606152
Numerator - Packs per outer box	10
EAN/UPC - Case	50046677606157

Dimensional drawing

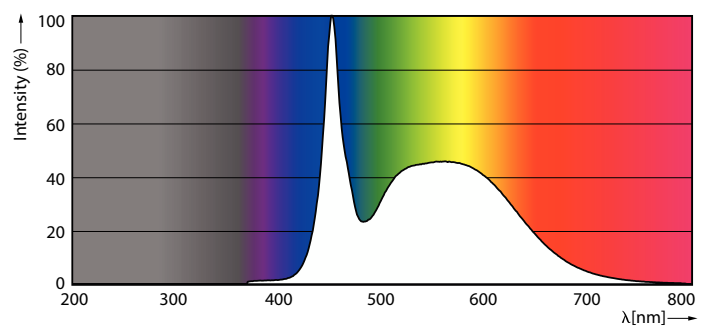


Product	D	D1	D2	A1	A2	A3
15T8-1U/COR/24-5CCT/FF22/G 10/1	1-1/8 inch	1-1/16 inch	1-1/8 inch	22-1/2 inch	1-5/8 inch	22-3/4 inch

Photometric data



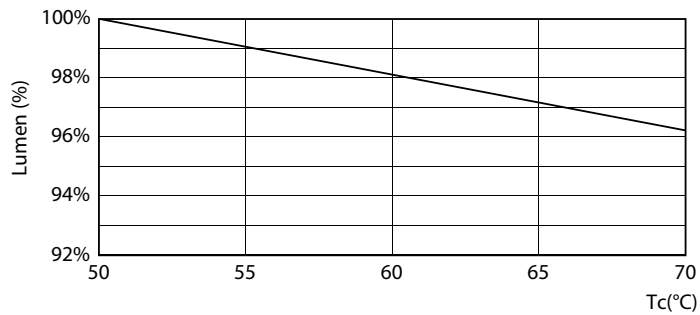
Light Distribution Diagram - 15T8-1U/COR/24-5CCT/FF22/G 10/1



Spectral Power Distribution Colour - 15T8-1U/COR/24-5CCT/FF22/G 10/1

FlexFit (Hybrid UL Type A + B) T8

Lifetime



Lumen Maintenance Diagram - 15T8-1U/COR/24-5CCT/FF22/G 10/1

