



PL-L

18PL-L/COR/55-5CCT/MF28/G/4P 10/1

Philips MainsFit (UL Type B) LED lamps make the transition to LED from CFL lamps as simple as replacing a lamp. With a wide array of color temperatures, the InstantFit LED lamps can quickly and effectively replace compact fluorescent lamps.

Product data

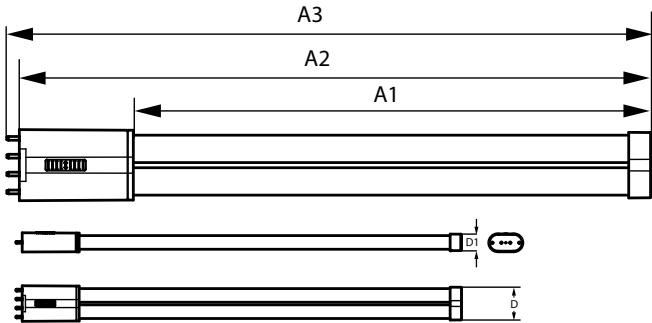
General Information		Warm-up time to 60% light	
Cap-Base	2G11		0.5 s
Nominal lifetime	50,000 hour(s)	Power Factor (Fraction)	0.9
Switching Cycle	50,000	Voltage (Nom)	120-277 V
Lighting Technology	LED	Temperature	
		T-Case Maximum (Nom)	167 °F
		Controls and Dimming	
		Dimmable	Only with specific dimmers
		Mechanical and Housing	
		Bulb Finish	Frosted
		Bulb Material	Glass
		Product Length	20-3/4 inch
		Bulb Shape	PL-L
		Net Weight (Piece)	0.353 lb
		Approval and Application	
		EU RoHS compliant	Yes
		Ambient temperature range	-4 to +113 °F
		Application Conditions	
		can it be used in closed luminaires	Yes
Light Technical			
Color Code	2700/3000/3500/4000/5000		
Beam Angle (Nom)	140 degree(s)		
Luminous Flux	2,550 2,550 2,550 2,800 2,800 lm		
Color Designation	2700/3000/3500/4000/5000		
Correlated Color Temperature (Nom)	2700 3000 3500 4000 5000 K		
Luminous Efficacy (rated) (Nom)	155 lm/W		
Color Consistency	<6		
Color rendering index (CRI)	82		
LLMF At End Of Nominal Lifetime (Nom)	70 %		
Operating and Electrical			
Input Frequency	50 to 60 Hz		
Power Consumption	18 W		
Lamp Current (Max)	190 mA		
Lamp Current (Min)	85 mA		
Wattage Equivalent	50 W		
Starting Time (Nom)	0.5 s		

PL-L

Product Data	
Order product name	18PL-L/COR/55-5CCT/MF28/G/4P 10/1
Full product name	18PL-L/COR/55-5CCT/MF28/G/4P 10/1
Order code	607150
Material Nr. (12NC)	929004602704
Numerator - Quantity Per Pack	1

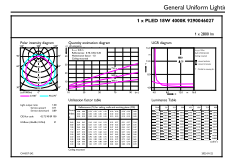
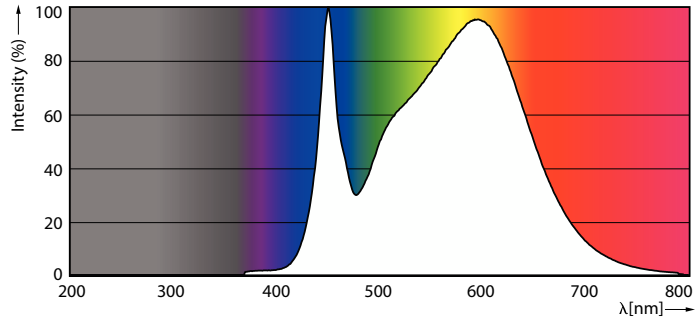
EAN/UPC - Product/Case	046677607159
Numerator - Packs per outer box	10
EAN/UPC - Case	50046677607154

Dimensional drawing



Product	D1	D	A1	A2	A3
18PL-L/COR/55-5CCT/ MF28/G/4P 10/1	7/8 inch	1-5/8 inch	18 inch	20-3/4 inch	21-1/16 inch

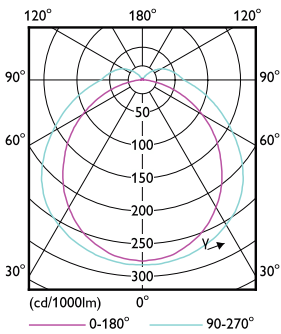
Photometric data



© 2024 Philips Lighting B.V. All rights reserved. Page 11

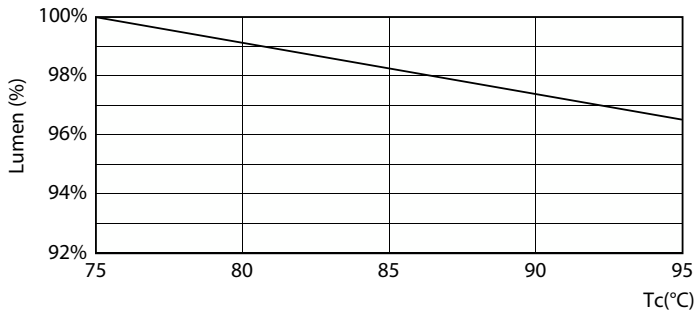
Spectral Power Distribution Colour - 18PL-L/COR/55-5CCT/MF28/G/4P 10/1

General uniform lighting - 18PL-L/COR/55-5CCT/MF28/G/4P 10/1

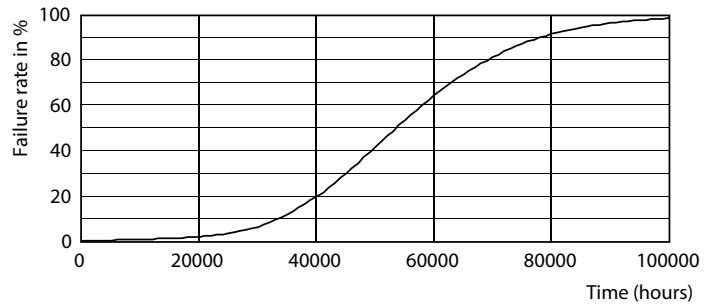


Light Distribution Diagram - 18PL-L/COR/55-5CCT/MF28/G/4P 10/1

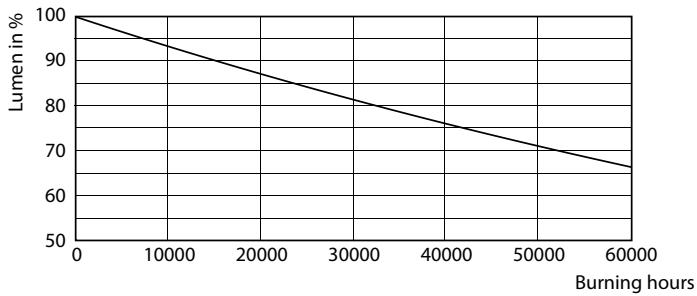
Lifetime



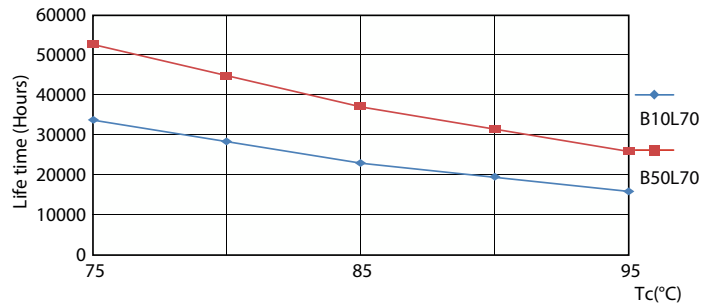
Lumen Maintenance Diagram - 18PL-L/COR/55-5CCT/MF28/G/4P 10/1



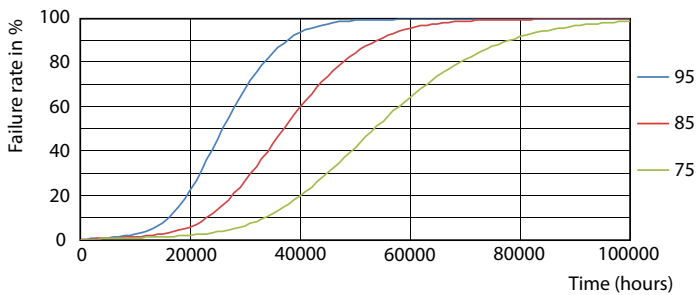
Life Expectancy Diagram



Lumen Maintenance Diagram - 18PL-L/COR/55-5CCT/MF28/G/4P 10/1



LEDtube 50K 7595 LifetimeVsTc-LED



LEDtube 50K 7595 FailureRate-LED

