



T5

25T5HO/COR/46-850/MF35/G 25/1

Philips T5 LED tubes offer an affordable, energy saving retrofit solution. The T5 lamps have been engineered to withstand the test of time with a 50,000-hour lifetime and a limited 5-year warranty to back it up. The lighting performance effectively replaces conventional fluorescent T5 HO or T5 HE lamps. Available in either InstantFit (Type A or Type C) or MainsFit (Type B / Ballast bypass), Philips T5 TLEDs provide a variety of options for any application.

Product data

General information	
Base	G5 [G5]
EU RoHS compliant	Yes
Nominal Lifetime (Nom)	50000 h
Switching Cycle	50000
Tier	CorePro
Light technical	
Color Code	850 [CCT of 5000K]
Beam Angle (Nom)	200 °
Initial lumen (Nom)	3500 lm
Color Designation	Daylight
Correlated Color Temperature (Nom)	5000 K
Luminous Efficacy (rated) (Nom)	140.00 lm/W
Color Consistency	<5
Color Rendering Index (Nom)	80
LLMF At End Of Nominal Lifetime (Nom)	70 %
Operating and electrical	
Input Frequency	50 to 60 Hz
Power (Rated) (Nom)	25 W

Lamp Current (Max)	250 mA
Lamp Current (Min)	95 mA
Starting Time (Nom)	0.5 s
Warm Up Time to 60% Light (Nom)	0.5 s
UL Type	TLED_Type B; UL classified double end
Power Factor (Nom)	0.9
Voltage (Nom)	120-277 V
Temperature	
T-Ambient (Max)	113 °F
T-Ambient (Min)	-4 °F
T-Storage (Max)	149 °F
T-Storage (Min)	-40 °F
T-Case Maximum (Nom)	167 °F
Controls and dimming	
Dimmable	Limited
Mechanical and housing	
Bulb Finish	Frosted
Bulb Material	Glass

T5

Product Length	47-1/4 in
Bulb Shape	Tube, double-ended

Approval and application

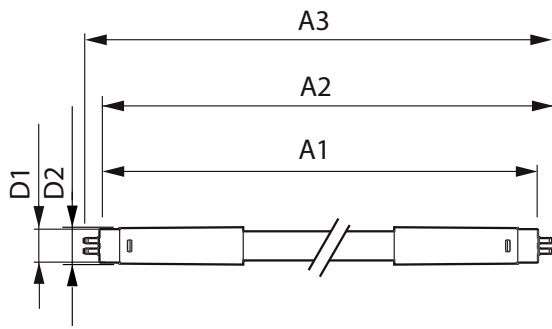
Energy Saving Product	Yes
Approbation Marks	RoHS compliance UL certificate DLC compliance

Product data

Order product name	25T5HO/COR/46-850/MF35/G 25/1
--------------------	-------------------------------

EAN/UPC - Product	046677576257
Order code	576256
Numerator - Quantity Per Pack	1
Numerator - Packs per outer box	25
Material Nr. (12NC)	929003122604
Net Weight (Piece)	0.333 lb

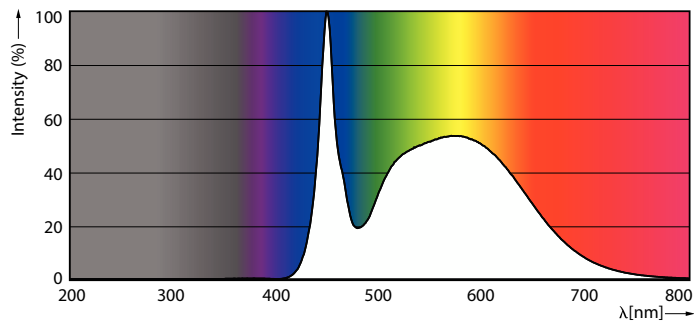
Dimensional drawing



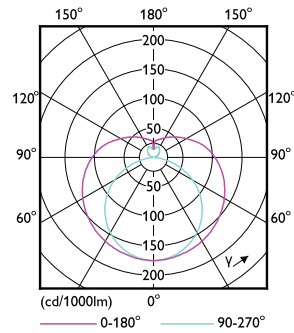
25T5HO/COR/46-850/MF35/G 25/1

Product	D1	D2	A1	A2	A3
25T5HO/COR/46-850/MF35/G	5/8 in	3/4 in	45-1/4 in	45-1/2 in	45-13/16 in
25/1					

Photometric data

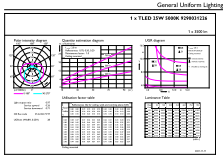


LEDtube COR NAM1 8W G5 1050lm 850-POC



LEDtube COR NAM4 25W G5 3300lm-LDD

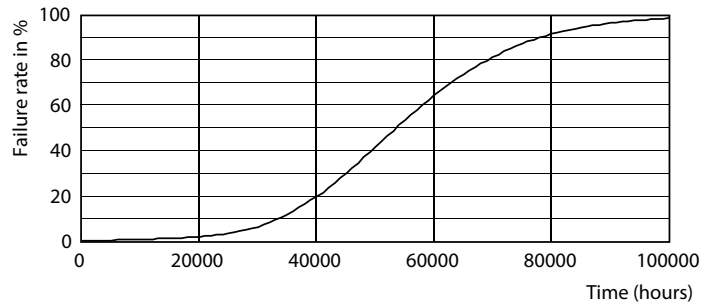
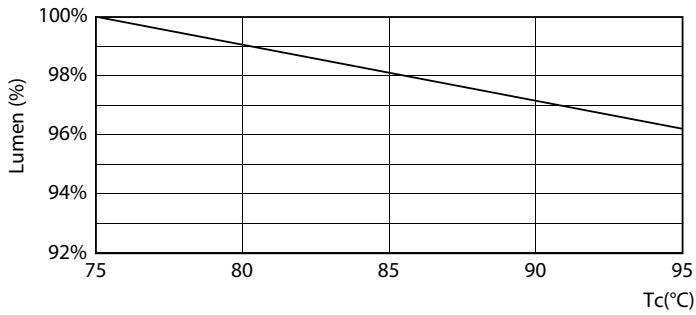
Photometric data



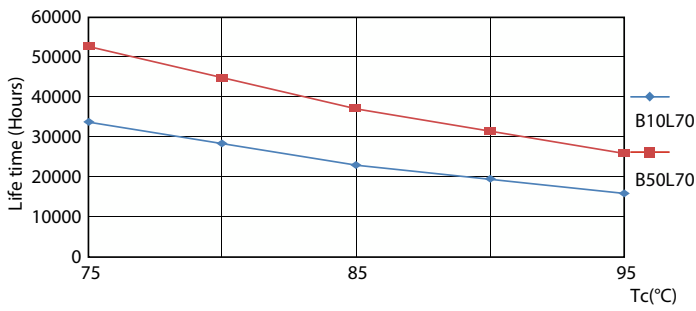
© 2022 Philips Lighting B.V. Page 11

LEDtube COR NAM4 25W G5 3500lm 850-GUL

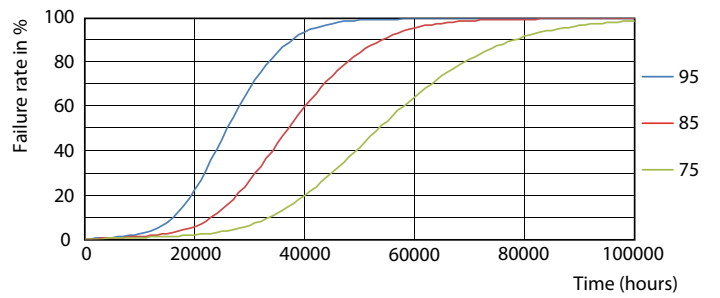
Lifetime



LEDtube COR NAM4 25W 50K LumenVsTc-LMP



Life Expectancy Diagram



LEDtube 50K 7595 LifetimeVsTc-LED

LEDtube 50K 7595 FailureRate-LED

