



Corepro InstantFit (UL Type-A) T8

30T8/COR/96-835/IF39/G/FA8 10/1

The CorePro InstantFit LED lamps provide hassle-free installation with simple lamp-for-lamp replacements. They deliver what we promise, with at least 40% energy savings, flicker-free performance, and the life you would expect. Other lamps claim compatibility but only CorePro InstantFit (UL Type A) has been proven to work with over 200 ballasts and drivers, delivering even light output, with proven energy savings and a long average lifetime. End users will be delighted being under these comfortable and high quality CorePro InstantFit lamps with no visible flicker and optimized optics. Energy managers will enjoy these lamps too as they can count the savings delivered by our lamps. To enjoy more energy savings, the CorePro InstantFit lamps can be paired with the Advance TLED drivers to create a Type C system.

Product data

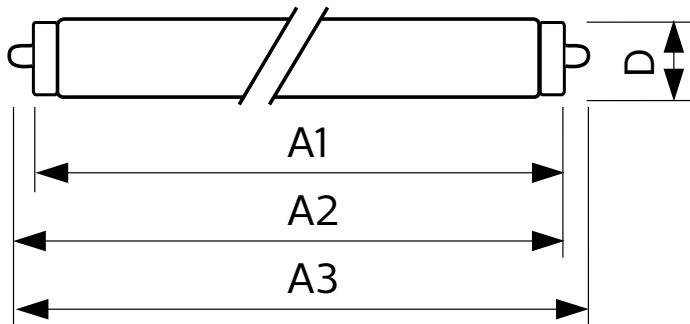
General Information		Color rendering index (CRI)	
Cap-Base	FA8		80
Nominal lifetime	50,000 hour(s)	LLMF At End Of Nominal Lifetime (Nom)	70 %
Switching Cycle	50,000	Operating and Electrical	
Lighting Technology	LED	Line Frequency	35000-150000 Hz
Light Technical		Input Frequency	35000-150000 Hz
Color Code	835 [CCT of 3500K]	Power Consumption	30 W
Beam Angle (Nom)	240 degree(s)	Lamp Current (Max)	350 mA
Luminous Flux	3,950 lm	Lamp Current (Min)	100 mA
Color Designation	White (WH)	Wattage Equivalent	60 W
Luminous Efficacy (rated) (Nom)	131.00 lm/W	Starting Time (Nom)	0.5 s
Correlated Color Temperature (Nom)	3500 K	Warm-up time to 60% light	0.5 s
Color Consistency	ANSI	Power Factor (Fraction)	0.9
		Voltage (Nom)	200-500 V

Corepro InstantFit (UL Type-A) T8

UL Type	UL Type A
Temperature	
Ambient temperature range	-4 °F to 113 °F
T-Case Maximum (Nom)	113 °F
Controls and Dimming	
Dimmable	No
Mechanical and Housing	
Bulb Finish	Frosted
Bulb Material	Glass
Product Length	94-1/2 inch
Bulb Shape	T8
Approval and Application	
Energy Saving Product	Yes
Approval Marks	UL certificate RoHS compliance
Energy Consumption kWh/1000 h	- kWh

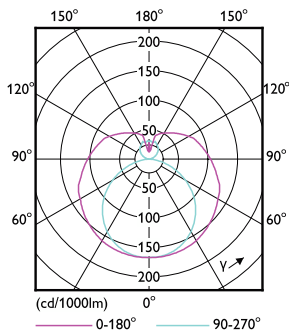
Energy Certifications	DLC Standard
EU RoHS compliant	Yes
Application Conditions	
can it be used in closed luminaires	Yes
Product Data	
Order product name	30T8/COR/96-835/IF39/G/FA8 10/1
Full product name	30T8/COR/96-835/IF39/G/FA8 10/1
Order code	533018
Material Nr. (12NC)	929001897204
Numerator - Quantity Per Pack	1
Net Weight (Piece)	1.19 lb
EAN/UPC - Product/Case	046677533014
Numerator - Packs per outer box	10
EAN/UPC - Case	50046677533019

Dimensional drawing

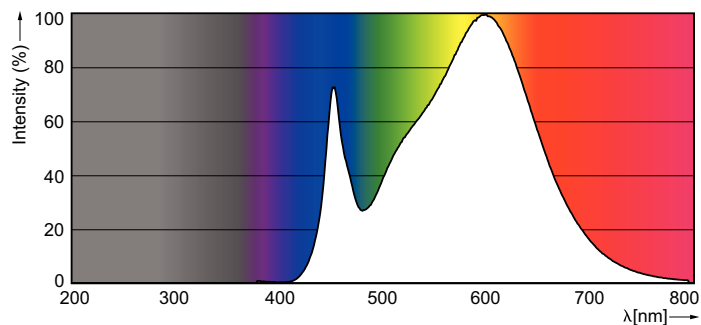


Product	D1	D2	A1	A2	A3
30T8/COR/96-835/IF39/G/FA8 10/1	1-1/16 inch	1-1/8 inch	93-3/16 inch	93-9/16 inch	93-15/16 inch

Photometric data



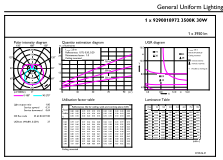
Light Distribution Diagram - 30T8/COR/96-835/IF39/G/FA8 10/1



Spectral Power Distribution Colour - 30T8/COR/96-835/IF39/G/FA8 10/1

Corepro InstantFit (UL Type-A) T8

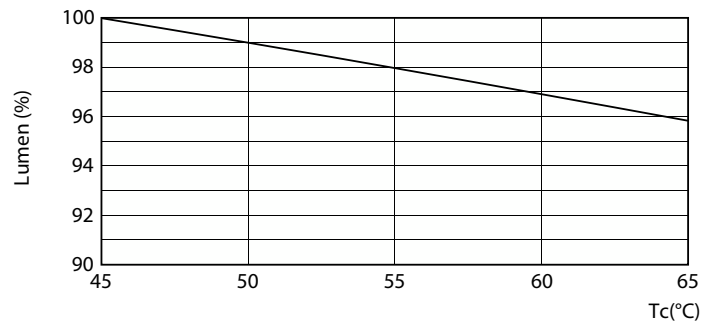
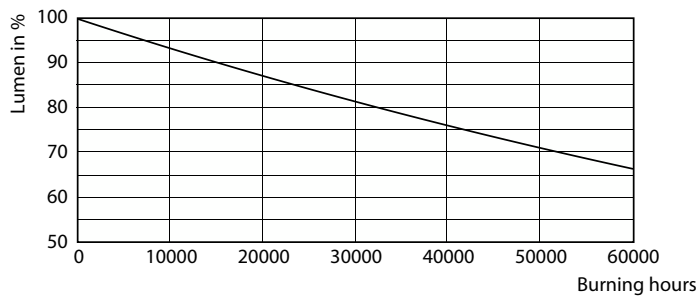
Photometric data



© 2023 Philips Lighting B.V. Page 11

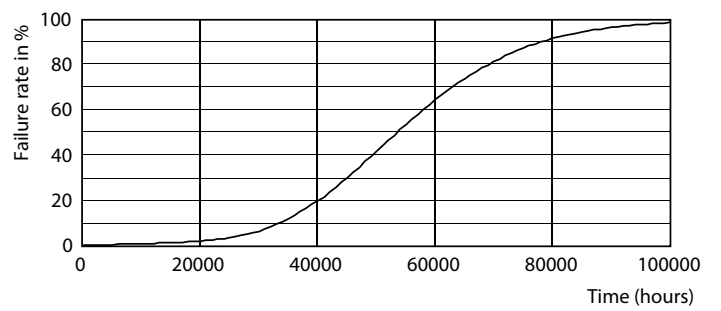
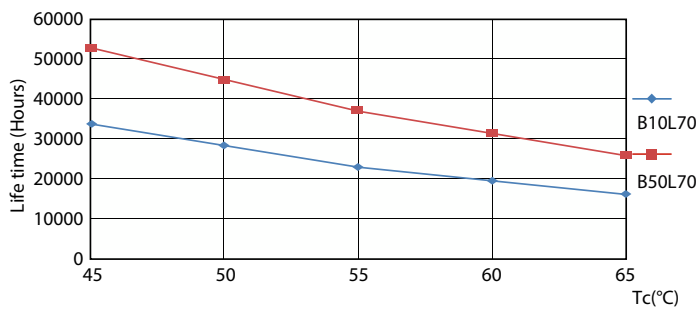
General uniform lighting - 30T8/COR/96-835/IF39/G/FA8 10/1

Lifetime



Lumen Maintenance Diagram - 30T8/COR/96-835/IF39/G/FA8 10/1

Lumen Maintenance Diagram - 30T8/COR/96-835/IF39/G/FA8 10/1

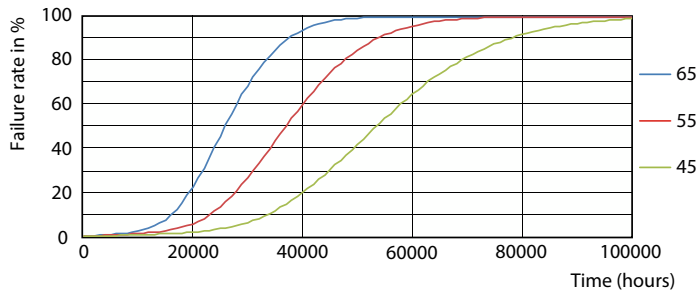


30W FA8

30W FA8

Corepro InstantFit (UL Type-A) T8

Lifetime



30W FA8

