

Line up the **savings**

Introducing the **versatile** GE Evolve™ EAL Universal Mounting Arm

The **Evolve™ EAL Universal Mounting Arm** is designed to accommodate a variety of mounting requirements in one, simple solution. Engineered to be highly flexible and adaptable, this mounting arm features a universal bolt pattern, adjustable slide plate, and can be easily affixed to both round and square poles of multiple sizes. Additionally, with built-in compatibility for both slip/fit and knuckle mounts, this fixture makes retrofitting quick and easy. The adaptability of the GE Evolve EAL Universal Mounting Arm makes it easier than ever before to upgrade your outdoor lighting to a cost-efficient, sustainable GE Evolve LED solution.



Saves time and money

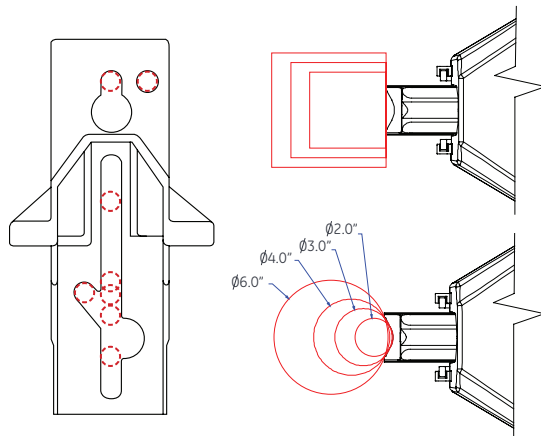
- Easy to install
- Designed for retrofits
- Reduces labor costs
- Time-saving

current
powered by GE



Easy to install and designed for retrofits

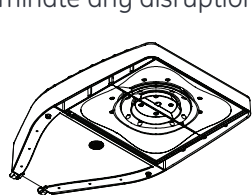
- Connect to most any existing hole spacing without the need for additional drilling
- Easily affixes to both square and round poles of multiple sizes
- Installs in three simple steps+:
 1. Effortlessly support the fixture weight during install using the key hole and load-bearing top bolt
 2. Line up the adjustable slide plate
 3. Secure the luminaire with second bolt and make electrical connection



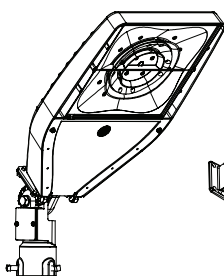
Universally adapts to the industry's most commonly used bolt patterns including both in-line and offset configurations as well as both square and round pole applications.

Quickly adapts to multiple field scenarios with minimal downtime

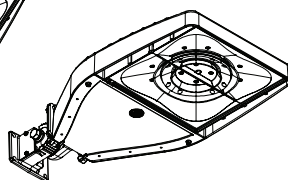
Depending on the mounting requirement, choose from the parts in the table to quickly adapt the mounting arm to a variety of scenarios. The short lead times make sure downtime is kept to a minimum or keep extra on-hand to eliminate any disruptions.



Built-in Slipfitter Mount "C1"



Knuckle Slipfitter Arm Mount "K1 or S1"



Knuckle Wall Mount "V1"

CAT No.	Description
35-965200-01	*Universal Mounting Arm "D1" BLACK
35-965200-02	Integral Slipfitter "C1"
35-965200-16	*Knuckle Slipfitter Mount "S1" BLACK
35-965200-23	*Knuckle Slipfitter Mount "K1" BLACK
35-965200-31	*Knuckle Wall Mount "V1" BLACK

*D1, S1, K1, and V1 are available in multiple colors. For additional mounting options please contact: Lightingproinfo@ge.com



View the installation overview video: <https://youtu.be/L0N5RW7W3q0>



Available with the GE Evolve™ EAL Area Light product series

- Replaces 150W – 1000W Metal Halide
- Extremely low-weight at 26-28lbs
- Built-in surge protection
- Innovative reflective optics designed to put light exactly where you need it
- Flat, tempered glass lense protects the optics and significantly reduces dirt accumulation
- 3G vibration rated die cast Al housing, with innovative heat sinking
- Excellent for all purpose commercial properties of all sizes



Visit <http://products.currentbyge.com> to view our full product catalog

+Consult the GEH6049 installation guide for complete installation instructions

current
powered by GE

All trademarks are the property of their respective owners. Information provided is subject to change without notice. All values are design or typical values when measured under laboratory conditions. Current, powered by GE is a business of the General Electric Company.
© 2017 GE.



www.currentbyge.com | OLP3133 (Rev 10/04/17)