

T8

42T8HO/COR/96-850/MF54/G/R17d 10/1

Our TLEDs are available in InstantFit (Type A / Type C) or MainsFit (Ballast bypass / Type B) versions. The InstantFit lamps work on a broad variety of ballasts and LED drivers. Only InstantFit has over 15,000 lamp & ballast combinations delivering even light output, energy savings and a long lifetime. Our MainsFit products feature a double-ended design, simplifying installation while a proprietary safety circuit minimizes a shock risk. Lamp sizes range from 2-foot to 8-foot and U-bend with a variety of lumen outputs.

Product data

General information	
Base	R17D [R17d (RDC)]
EU RoHS compliant	Yes
Nominal Lifetime (Nom)	50000 h
Switching Cycle	50000
Tier	CorePro

Light technical	
Color Code	850 [CCT of 5000K]
Beam Angle (Nom)	240 °
Initial lumen (Nom)	5400 lm
Color Designation	Daylight
Correlated Color Temperature (Nom)	5000 K
Luminous Efficacy (rated) (Nom)	128.00 lm/W
Color Consistency	<5
Color Rendering Index (Nom)	80
LLMF At End Of Nominal Lifetime (Nom)	70 %

Operating and electrical	
Input Frequency	50 to 60 Hz

Temperature	
T-Ambient (Max)	113 °F
T-Ambient (Min)	-4 °F
T-Storage (Max)	149 °F
T-Storage (Min)	-40 °F
T-Case Maximum (Nom)	131 °F

Controls and dimming	
Dimmable	Limited

Power (Rated) (Nom)	42 W
Lamp Current (Max)	400 mA
Lamp Current (Min)	180 mA
Wattage Equivalent	96 W
Starting Time (Nom)	0.5 s
Warm Up Time to 60% Light (Nom)	0.5 s
UL Type	Type B - bypass the ballast
Power Factor (Nom)	0.9
Voltage (Nom)	120-277 V

T8

Mechanical and housing

Bulb Finish	Frosted
Bulb Material	Glass
Product Length	94-1/2 in
Bulb Shape	Tube, double-ended

Approval and application

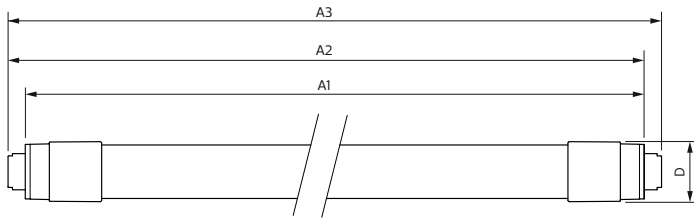
Energy Saving Product	Yes
Approbation Marks	RoHS compliance UL certificate

Product data

Order product name	42T8HO/COR/96-850/MF54/G/R17d 10/1
--------------------	------------------------------------

EAN/UPC - Product	046677575755
Order code	575753
Numerator - Quantity Per Pack	1
Numerator - Packs per outer box	10
Material Nr. (12NC)	929003112404
Net Weight (Piece)	0.882 lb
Model Number	9290031124

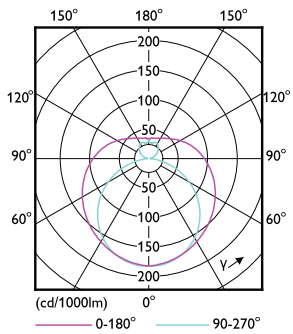
Dimensional drawing



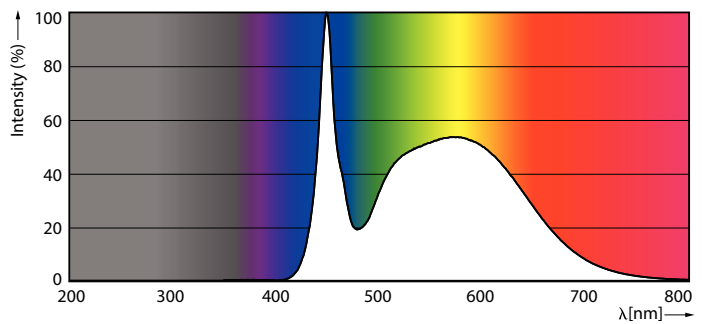
Product	D2	A1	A2	A3
42T8HO/COR/96-850/MF54/G/R17d 10/1	1-1/8 in	93-5/16 in	93-11/16 in	93-15/16 in

42T8HO/COR/96-850/MF54/G/R17d 10/1

Photometric data

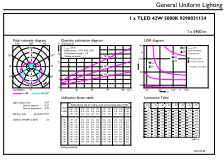


LEDtube COR 8ft 42W FA8 5400lm-LDD



LEDtube COR 8ft 42W FA8 5400lm 850-POC

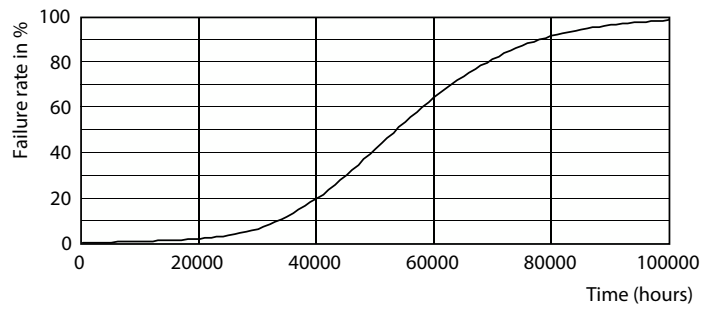
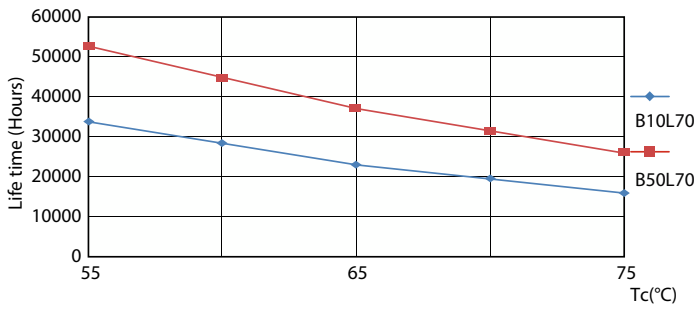
Photometric data



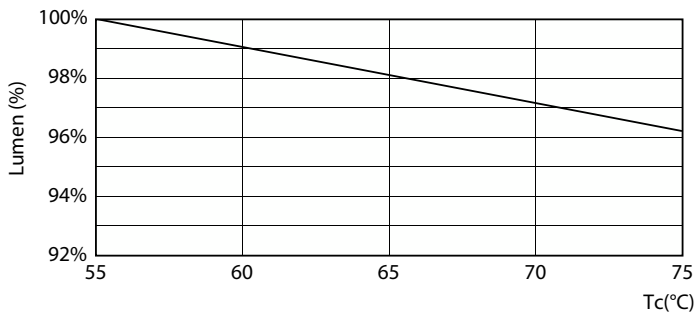
© 2022 Philips Lighting B.V. Page 11

LEDtube COR 8ft 42W R17D 5400lm 850-GUL

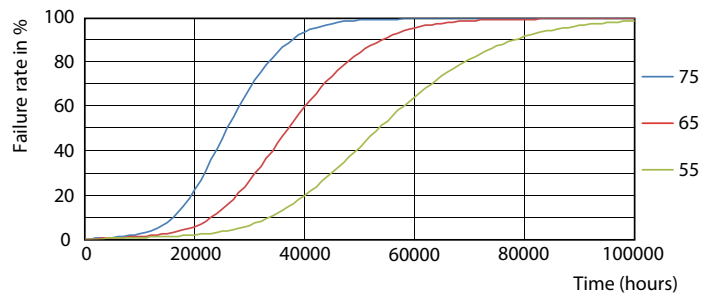
Lifetime



LEDtube COR 8ft 42W 50K LifetimeVsTc-LED



Life Expectancy Diagram

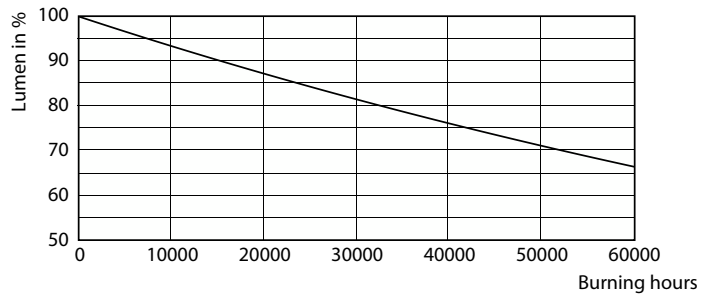


LEDtube COR 8ft 42W 50K LumenVsTc-LMP

LEDtube COR 8ft 42W 50K FailureRate-LED

T8

Lifetime



Lumen Maintenance Diagram

