



CorePro MainsFit (UL Type-B) T8

43T8/COR/96-5CCT/MF52LS/G/FA8-R17D 10/1

The CorePro MainsFit (UL Type B) lamps are designed to be the perfect retrofit solution to move from traditional fluorescent lamps to energy saving LEDs. This ballast bypass lamp has everything needed built into the lamp with proven energy savings, long life (up to 50k hours), surge suppression and industry leading safety features. All lamps in the CorePro MainsFit family are double-ended to help simplify the installation. In addition, all lamps meet the Philips standards for light quality so that end users will be in a comfortable environment regardless of the CorePro MainsFit lamp type.

Product data

General Information		Photobiological safety according to EN 62471	
Cap-Base	FA8/R17D		RG0
Nominal lifetime	50,000 hour(s)		
Switching Cycle	50,000		
Lighting Technology	LED		
Light Technical		Operating and Electrical	
Color Code	3000K/3500K/4000K/5000K/6500K	Input Frequency	50 to 60 Hz
Beam Angle (Nom)	220 degree(s)	Power Consumption	26 34 43
Luminous Flux	3,400 4,300 5,200 lm	Lamp Current (Nom)	480 mA
Color Designation	3000K/3500K/4000K/5000K/6500K	Wattage Equivalent	110 W
Luminous Efficacy (rated) (Nom)	126 lm/W	Starting Time (Nom)	0.5 s
Correlated Color Temperature (Nom)	Selectable 3000 3500 4000 5000 6500 K	Warm-up time to 60% light	0.5 s
Color Consistency	<3	Power Factor (Fraction)	0.9
Color rendering index (CRI)	80	Voltage (Nom)	120-277 V
LLMF At End Of Nominal Lifetime (Nom)	70 %	UL Type	UL Type B
		Temperature	
		Ambient temperature range	-4 to +113 °F

CorePro MainsFit (UL Type-B) T8

T-Case Maximum (Nom)	131 °F
Controls and Dimming	
Dimmable	Limited
Mechanical and Housing	
Bulb Finish	Frosted
Bulb Material	Glass
Product Length	94-1/2 inch
Bulb Shape	T8
Approval and Application	
Energy Saving Product	Yes
Approval Marks	RoHS compliance UL certificate DLC compliance
EU RoHS compliant	Yes

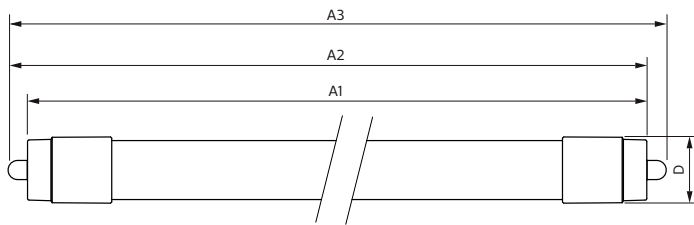
Application Conditions

can it be used in closed luminaires	Yes
-------------------------------------	-----

Product Data

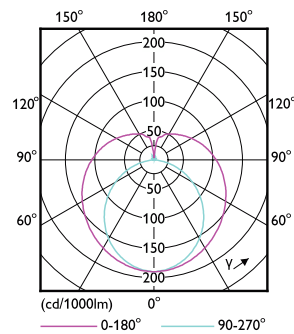
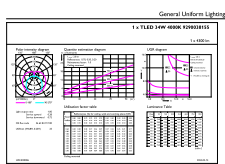
Order product name	43T8/COR/96-5CCT/MF52LS/G/FA8-R17D 10/1
Full product name	43T8/COR/96-5CCT/MF52LS/G/FA8-R17D 10/1
Order code	589804
Material Nr. (12NC)	929003815504
Numerator - Quantity Per Pack	1
Net Weight (Piece)	0.948 lb
EAN/UPC - Product/Case	046677589806
Numerator - Packs per outer box	10
EAN/UPC - Case	50046677589801

Dimensional drawing



Product	D1	D2	A1	A2	A3
43T8/COR/96-5CCT/MF52LS/G/FA8-R17D 10/1		1-1/8 inch	93-5/16 inch	93-11/16 inch	94-1/16 inch

Photometric data

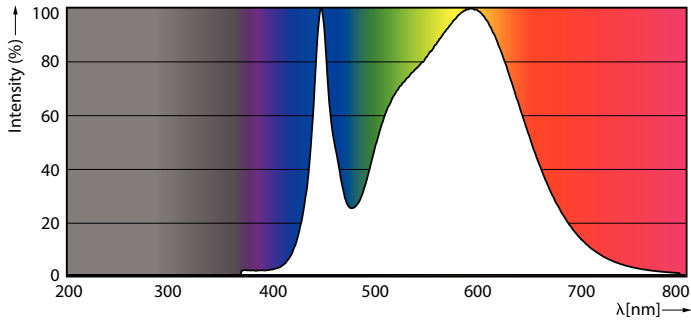


General uniform lighting - 43T8/COR/96-5CCT/MF52LS/G/FA8-R17D 10/1

Light Distribution Diagram - 43T8/COR/96-5CCT/MF52LS/G/FA8-R17D 10/1

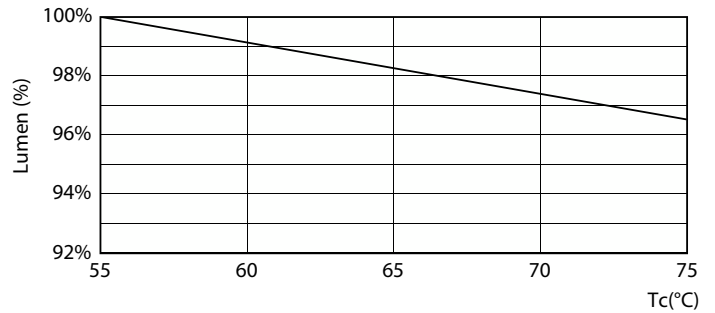
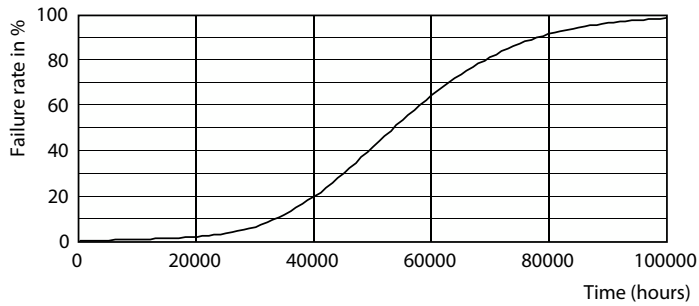
CorePro MainsFit (UL Type-B) T8

Photometric data



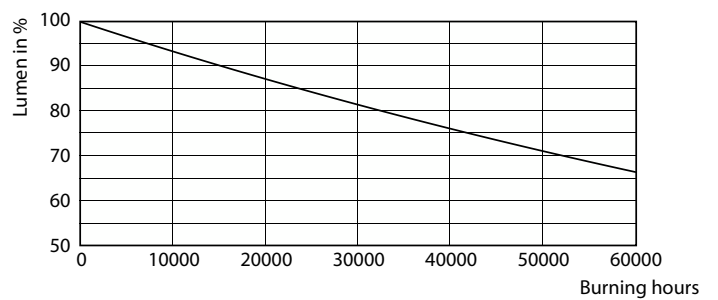
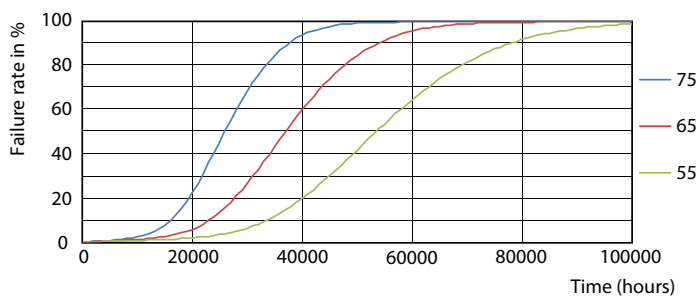
Spectral Power Distribution Colour - 43T8/COR/96-5CCT/MF52LS/G/FA8-R17D 10/1

Lifetime



Life Expectancy Diagram

Lumen Maintenance Diagram - 43T8/COR/96-5CCT/MF52LS/G/FA8-R17D 10/1

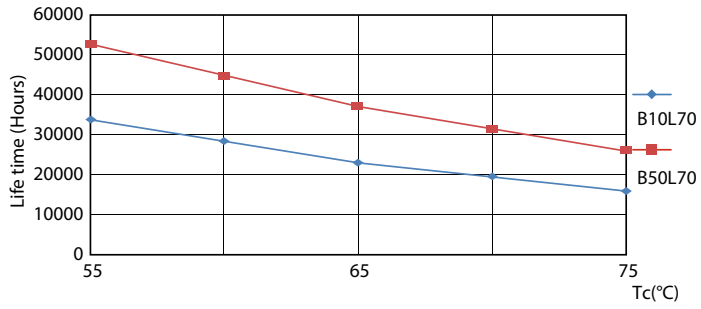


FailureRate

Lumen Maintenance Diagram - 43T8/COR/96-5CCT/MF52LS/G/FA8-R17D 10/1

CorePro MainsFit (UL Type-B) T8

Lifetime



LifetimeVsTc

