



# LED Glass HID lamps

## 45GC/LED/840 EX39 BB 6/1

Philips Glass HID lamps offer you an easy, short-payback LED solution to replace High Intensity Discharge (HID) lamps. Thanks to our High-Power LED filament technology, this new generation of indoor/outdoor glass lamps brings all the energy-efficiency and long-lifetime benefits of LED to HID replacement, while providing instant savings with a low initial investment. They are designed to have the same aesthetics, lamp size and light distribution as the HID lamps they are replacing, so the upgrade to LED is easier than ever!

### Product data

General Information		Power Consumption	
Cap-Base	EX39 [Exclusionary Mogul Screw]	Lamp Current (Max)	600 mA
Nominal lifetime	50,000 hour(s)	Starting Time (Nom)	0.5 s
Switching Cycle	50,000	Warm-up time to 60% light	0.5 s
Lighting Technology	LED	Power Factor (Fraction)	0.9
		Voltage (Nom)	120-277 V
		UL Type	HIB_UL Type B (UL Listed+Classified)
Light Technical		Temperature	
Color Code	840 [CCT of 4000K]	T-Case Maximum (Nom)	133 °F
Beam Angle (Nom)	300 degree(s)		
Luminous Flux	7,500 lm	Controls and Dimming	
Color Designation	Cool White (CW)	Dimmable	Only with specific dimmers
Correlated Color Temperature (Nom)	4000 K		
Luminous Efficacy (rated) (Nom)	166 lm/W	Mechanical and Housing	
Color Consistency	<6	Bulb Finish	Clear
Color rendering index (CRI)	80	Bulb Shape	ED28
LLMF At End Of Nominal Lifetime (Nom)	70 %	Net Weight (Piece)	0.573 lb
Photobiological safety according to EN 62471	RG1		
Operating and Electrical			
Input Frequency	50 to 60 Hz		

# LED Glass HID lamps

## Approval and Application

Approval Marks	DLC compliance
EU RoHS compliant	Yes
Ambient temperature range	-4 to +113 °F

## Application Conditions

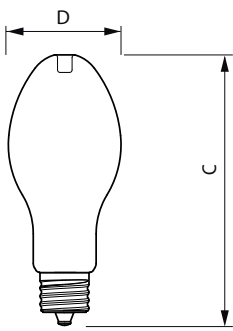
can it be used in closed luminaires	Yes
-------------------------------------	-----

## Product Data

Order product name	45GC/LED/840 EX39 BB 6/1
--------------------	--------------------------

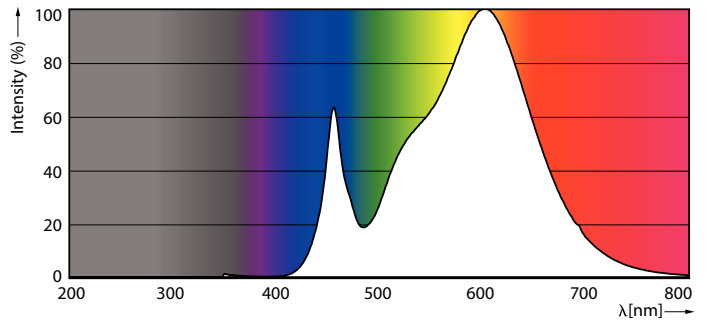
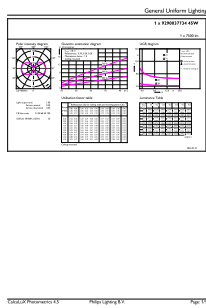
Full product name	45GC/LED/840 EX39 BB 6/1
Order code	588236
Material Nr. (12NC)	929003773404
Numerator - Quantity Per Pack	1
EAN/UPC - Product/Case	046677588236
Numerator - Packs per outer box	6
EAN/UPC - Case	50046677588231

## Dimensional drawing



Product	D	C
45GC/LED/840 EX39 BB 6/1	3-5/8 inch	9-9/16 inch

## Photometric data

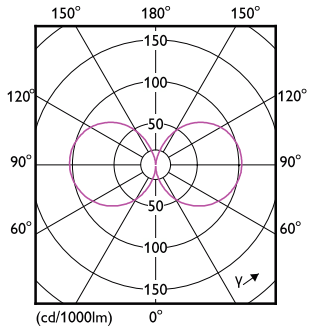


General uniform lighting - 45GC/LED/840 EX39 BB 6/1

Spectral Power Distribution Colour - 45GC/LED/840 EX39 BB 6/1

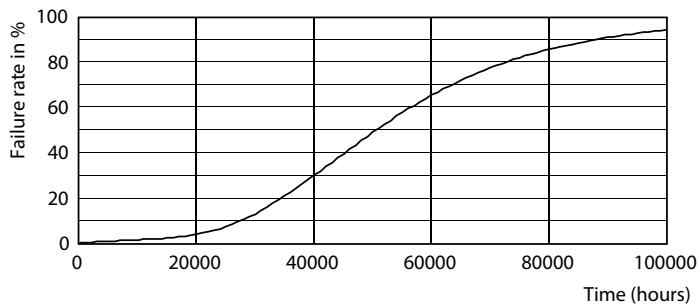
# LED Glass HID lamps

## Photometric data

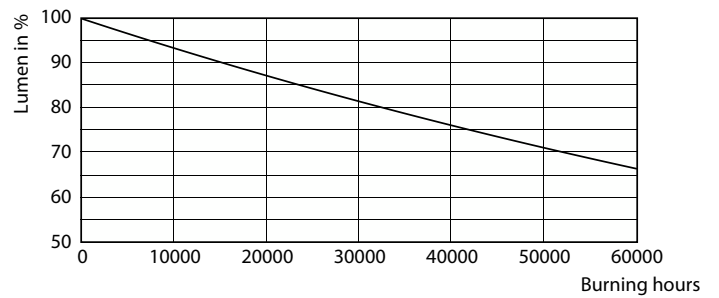


Light Distribution Diagram - 45GC/LED/840 EX39 BB 6/1

## Lifetime



Life Expectancy Diagram



Lumen Maintenance Diagram - 45GC/LED/840 EX39 BB 6/1

