

Project		Catalog #		Type	
Prepared by		Notes		Date	



## Metalux

### WSNLED

#### Premium LED Wraparound

#### Typical Applications

Commercial • Institutional • Retail • Industrial

#### Interactive Menu

- Order Information [page 2](#)
- Photometric Data [page 3](#)
- Product Warranty

#### Product Certification



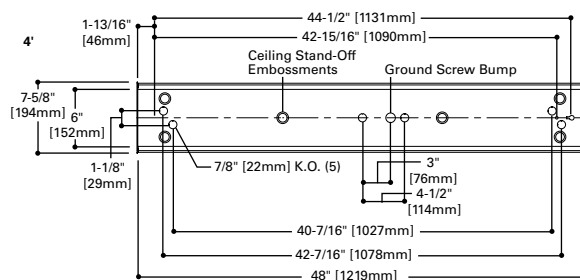
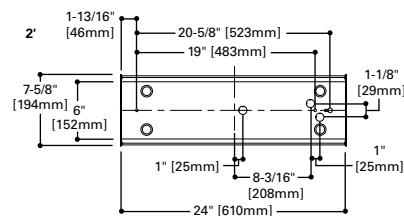
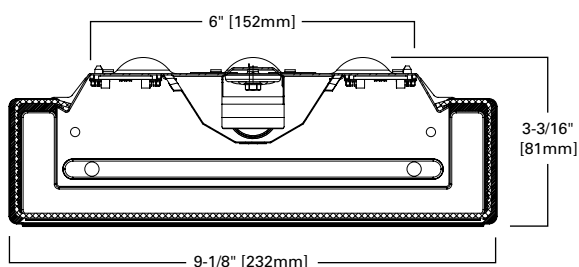
#### Product Features



#### Top Product Features

- 4 ft. and 2 ft. product configurations
- Premium LED lens material provides best-in-class illumination
- UNV (120V-277V) 0 to 10V dimmable driver
- Color Temperature (CCT): 3000K, 3500K, 4000K, 5000K
- Ideal for single or continuous row applications
- Options to meet Trade Agreements Act requirements

#### Dimensional and Mounting Details



## Order Information

SAMPLE ORDER NUMBER: **4WSNLED-LD4-40SL-F-UNV-L840-CD1-U**

Domestic Preferences	Length	Series	Lamp Type	Lumen Output		Lens	Voltage	Emergency Options
Domestic Preferences <sup>(1)</sup>	Length	Series <sup>(2)</sup>	Lamp Type	Lumen Output		Lens	Voltage	Emergency Options <sup>(5)</sup>
[Blank]=Standard TAA=Trade Agreements Act	2=2 ft. 4=4 ft.	WSNLED=Premium Commercial LED Wraparound	LD4=LED4.0	20SL=2000 24SL=2400 28SL=2800 32SL=3200 36SL=3600 40SL=4000	44SL=4400 48HL=4800 52HL=5200 56HL=5600 60HL=6000 64HL=6400	F=Frost Acrylic (standard)	347=347V <sup>(3)</sup> 480=480V <sup>(3)</sup> UNV=Universal Voltage 120-277	EL7W=7-watt, 120V-277V emergency battery pack installed <sup>(4), (6)</sup> EL14W=14-watt 120V-277V emergency battery pack installed <sup>(4), (6)</sup>
Notes  (1) Only product configurations with this designated prefix are built to be compliant with the Trade Agreements Act of 1979 (TAA). Please refer to <a href="#">DOMESTIC PREFERENCES</a> website for more information. Components shipped separately may be separately analyzed under domestic preference requirements.		Notes  (2) DesignLights Consortium® Qualified and classified for DLC Standard, refer to <a href="#">www.designlights.org</a> for details.					Notes  (3) 4 ft. model.	Notes  (4) Emergency options not available for 2 ft. versions. Requires larger cover which changes the appearance. (5) Emergency options use taller ballast cover that alters appearance. (6) With integral test switch/indicator/laser test. For approximate delivered lumens multiply the lumens per watt of the desired fixture by the wattage of the emergency battery pack (100 lm/W x 7=700 lumens). IES-format photometry for luminaire under emergency operation available.

CCT	Driver Type	Number of Drivers	Packaging	Accessories
CCT	Driver Type	Number of Drivers	Packaging	Accessories (order separately) <sup>(9)</sup>
L830=3000K L835=3500K L840=4000K L850=5000K	CD=0-10V Dimming Driver (10%-100% Dimming) SD=Step-Dim Driver SLTD=Fifth Light DALI Driver (5%-100% Dimming) <sup>(7), (8)</sup>	1=1 Driver	U=Unit Pack	SCF=Fixed Stem Set (Specify Length) SCS=Swivel Stem Set (Specify Length) SCA=Adjustable 48" Stem Set A1B/Spacer-U=Spacer 1-1/2" to 2-1/2" from ceiling (Use 2 Per Fixture)
	<b>Notes</b> (7) 4 ft. model only. (8) SLTD DALI driver available for all lumen unit only.			<b>Notes</b> (9) Accessories sold separately will be separately analyzed under domestic preference requirements. Consult factory for further information.

## Product Specifications

## Construction

- Housing consists of die formed cold rolled steel.
- Ends formed with the housing for strength and provisions for continuous row aligners
- Steel end plates with 7/8" KO and light-seal embossment
- Driver cover can be removed without tools

## Controls

- WSNLED is Powered by Fifth Light, with standard a 0-10V continuous dimming driver that works with any 0-10V control/ dimmer
- Combine with energy saving products like occupancy sensors, daylighting controls and lighting relay panels to maximize energy savings
- Dimming range is 10% to 100%; varies by control device
- Other driver options include step-dim or, go fully digital with the Digital Addressable Lighting Interface (DALI) drivers

## Electrical

- Long-Life LED system coupled with electrical driver to deliver optimal performance
- LED's available in 3000K, 3500K, 4000K and 5000K with a min. 80 CRI
- Projected life at 70% lumen maintenance is nearly 150,000 hours with TM21 rating up to L87 > 60,000 hours
- Electronic drivers are available for 120-277V applications. A 0-10V dimming driver is standard

## Emergency Battery Pack Options

- Optional 120V-277V integral emergency battery pack is available in 7-watts or 14-watts to meet critical life-safety lighting requirements
- The 90-minute batteries provide constant power to the LED system, ensuring code compliance
- The patented EZ Key prevents accidental discharge of the battery during construction

## Finish

- Multistage iron phosphate pretreatment ensures maximum bonding and rust inhibitor
- High reflective paint after fabrication, baked white enamel finish is standard

## Channel/Wireway Cover

- Die formed heavy gauge steel
- Tight fit for ease of maintenance

## Shielding

- Acrylic end caps with a frost finish to improve aesthetics and illumination
- Clear acrylic lens coupled with LED optical materials providing superior brightness control while improving overall light distribution and aesthetics
- This distribution is further enhanced through the use of embedded prisms within the lens on both side and bottom

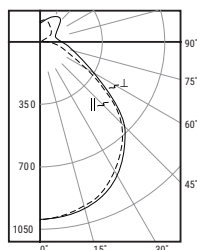
## Installation

- Fixture may be surface, pendant, or stem mounted
- See accessories below for ordering information

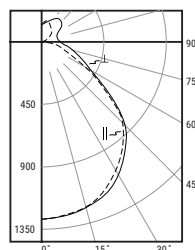
## Compliance

- Indoor luminaires are cULus listed for 25°C ambient environments, damp location listed, RoHS compliant, and LED modules comply with IESNA LM-79 and LM-80 standards
- DesignLights Consortium® Qualified and classified for DLC Standard, refer to [www.designlights.org](#) for details
- Suitable for use in clothes closets when installed in accordance with the NEC 410.16 spacing requirements
- Can be used for State of California Title 24 high efficacy luminaire

## Photometric Data

[View IES files](#)


**4WSNLED-LD4-32SL-F-UNV-L835-CD1-U**  
 Electronic Driver Linear LED 3500K  
 Spacing criterion: (II) 1.3 x mounting height,  
 (L) 1.3 x mounting height  
 Lumens: 3212  
 Input Watts: 30.0W  
 Efficacy: 107.1 lm/W  
 Test Report:  
 4WSNLED-LD4-32SL-F-UNV-L835-CD1-U.IES



**4WSNLED-LD4-40SL-F-UNV-L835-CD1-U**  
 Electronic Driver Linear LED 3500K  
 Spacing criterion: (II) 1.3 x mounting height,  
 (L) 1.3 x mounting height  
 Lumens: 4087  
 Input Watts: 39.8W  
 Efficacy: 102.7 lm/W  
 Test Report:  
 4WSNLED-LD4-40SL-F-UNV-L835-CD1-U.IES

## Energy and Performance Data by Catalog Number

Lumen Type	Length	Catalog Number	Nominal 3500K Lumens	Wattage	lm/W
Standard	2 ft.	2WSNLED-LD4-20SL-F-UNV-L8XX-CD1-U	2073	21.7	95
Standard	2 ft.	2WSNLED-LD4-24SL-F-UNV-L8XX-CD1-U	2390	25.6	93
Standard	2 ft.	2WSNLED-LD4-28SL-F-UNV-L8XX-CD1-U	2832	31.4	90
Standard	4 ft.	4WSNLED-LD4-20SL-F-UNV-L8XX-CD1-U	2009	18.3	110
Standard	4 ft.	4WSNLED-LD4-24SL-F-UNV-L8XX-CD1-U	2393	21.9	109
Standard	4 ft.	4WSNLED-LD4-28SL-F-UNV-L8XX-CD1-U	2853	26.5	108
Standard	4 ft.	4WSNLED-LD4-32SL-F-UNV-L8XX-CD1-U	3212	30.0	107
Standard	4 ft.	4WSNLED-LD4-36SL-F-UNV-L8XX-CD1-U	3653	34.8	105
Standard	4 ft.	4WSNLED-LD4-40SL-F-UNV-L8XX-CD1-U	4087	39.8	103
Standard	4 ft.	4WSNLED-LD4-44SL-F-UNV-L8XX-CD1-U	4424	43.8	101
High	4 ft.	4WSNLED-LD4-48HL-F-UNV-L8XX-CD1-U	4749	47.9	99
High	4 ft.	4WSNLED-LD4-52HL-F-UNV-L8XX-CD1-U	5138	53.3	96
High	4 ft.	4WSNLED-LD4-56HL-F-UNV-L8XX-CD1-U	5536	58.8	94
High	4 ft.	4WSNLED-LD4-60HL-F-UNV-L8XX-CD1-U	6064	66.9	91
High	4 ft.	4WSNLED-LD4-64HL-F-UNV-L8XX-CD1-U	6490	72.9	89

## Shipping Data

Catalog No.	Wt.
2WSNLED	5 lbs.
4WSNLED	9 lbs.

## CCT Table

Approximate Color Temperature Multiplier	
5000K	1.03
4000K	1.00
3000K	0.98