

LED Glass HID lamps

54GC/LED/830 EX39 BB 6/1

Philips Glass HID lamps offer you an easy, short-payback LED solution to replace High Intensity Discharge (HID) lamps. Thanks to our High-Power LED filament technology, this new generation of indoor/outdoor glass lamps brings all the energy-efficiency and long-lifetime benefits of LED to HID replacement, while providing instant savings with a low initial investment. They are designed to have the same aesthetics, lamp size and light distribution as the HID lamps they are replacing, so the upgrade to LED is easier than ever!

Product data

General Information		Power Consumption	
Cap-Base	EX39 [Exclusionary Mogul Screw]	Lamp Current (Max)	620 A
Nominal lifetime	50,000 hour(s)	Lamp Current (Nom)	120 277 mA A
Switching Cycle	50,000	Starting Time (Nom)	0.5 s
Lighting Technology	LED	Warm-up time to 60% light	0.5 s
		Power Factor (Fraction)	0.9
		Voltage (Nom)	120-277 V
		UL Type	HIB_UL Type B (UL Listed+Classified)
Light Technical		Temperature	
Color Code	830 [CCT of 3000K]	Ambient temperature range	-4 to +113 °F
Beam Angle (Nom)	300 degree(s)	T-Case Maximum (Nom)	115 °F
Luminous Flux	9,000 lm		
Color Designation	White (WH)	Controls and Dimming	
Luminous Efficacy (rated) (Nom)	166 lm/W	Dimmable	Only with specific dimmers
Correlated Color Temperature (Nom)	3000 K		
Color Consistency	<6	Mechanical and Housing	
Color rendering index (CRI)	80	Bulb Finish	Clear
LLMF At End Of Nominal Lifetime (Nom)	70 %	Bulb Shape	ED32
Photobiological safety according to EN 62471	RG1		
Operating and Electrical			
Input Frequency	50 to 60 Hz		

LED Glass HID lamps

Approval and Application

Approval Marks	DLC compliance
EU RoHS compliant	Yes

Application Conditions

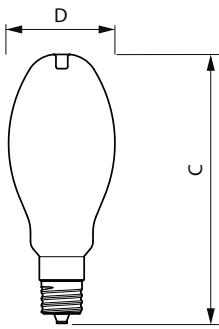
can it be used in closed luminaires	Yes
-------------------------------------	-----

Product Data

Order product name	54GC/LED/830 EX39 BB 6/1
Full product name	54GC/LED/830 EX39 BB 6/1

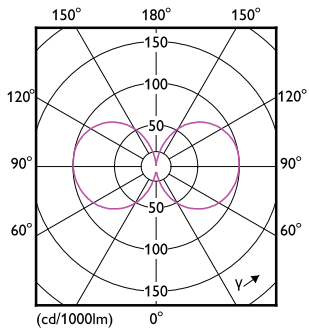
Order code	588251
Material Nr. (12NC)	929003773604
Numerator - Quantity Per Pack	1
Net Weight (Piece)	0.639 lb
EAN/UPC - Product/Case	046677588250
Numerator - Packs per outer box	6
EAN/UPC - Case	50046677588255

Dimensional drawing

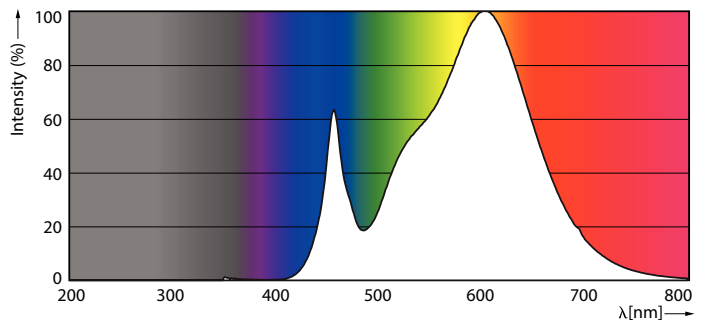


Product	D	C
54GC/LED/830 EX39 BB 6/1	4-1/8 inch	9-9/16 inch

Photometric data



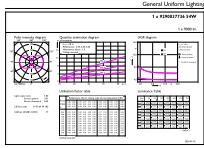
Light Distribution Diagram - 54GC/LED/830 EX39 BB 6/1



Spectral Power Distribution Colour - 54GC/LED/830 EX39 BB 6/1

LED Glass HID lamps

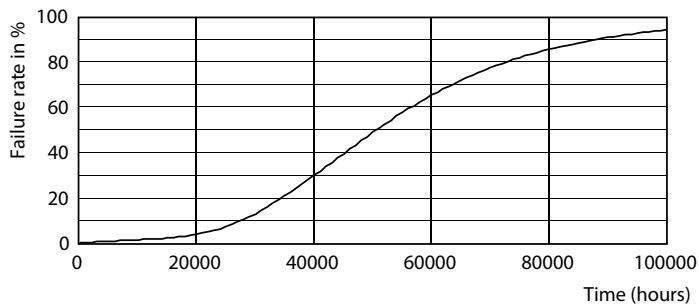
Photometric data



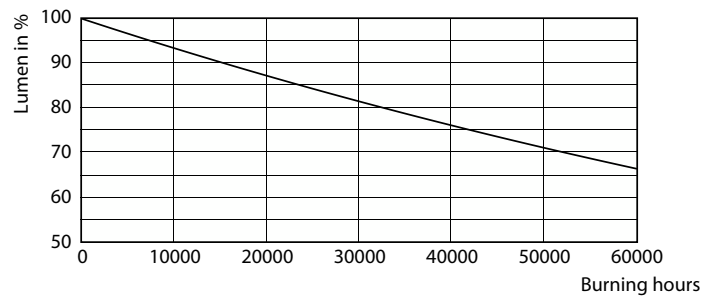
Technical Parameters 43 Philips Lighting B.V. Page 10

General uniform lighting - 54GC/LED/830 EX39 BB 6/1

Lifetime



Life Expectancy Diagram



Lumen Maintenance Diagram - 54GC/LED/830 EX39 BB 6/1

