



# PL-S

## 5PL-S/COR/9H-5CCT/MF5/P/2P 20/1

Philips LED PL-S lamps make the transition to LED from CFL lamps as simple as replacing a lamp. The InstantFit (UL Type A) 2-pin PL-S LED lamps are available in a wide array of color temperatures. They quickly and effectively replace 13W 2-pin compact fluorescent PL-S lamps.

### Product data

General Information	
Cap-Base	G23
Nominal lifetime	50,000 hour(s)
Switching Cycle	50,000
Lighting Technology	LED

Light Technical	
Color Code	2700/3000/3500/4000/5000
Beam Angle (Nom)	140 degree(s)
Luminous Flux	475 475 475 500 500 lm
Color Designation	2700/3000/3500/4000/5000
Correlated Color Temperature (Nom)	2700 3000 3500 4000 5000 K
Luminous Efficacy (rated) (Nom)	111 lm/W
Color Consistency	<6
Color rendering index (CRI)	82
LLMF At End Of Nominal Lifetime (Nom)	70 %

Operating and Electrical	
Input Frequency	50 to 60 Hz
Power Consumption	4.5 W
Lamp Current (Max)	40 mA
Lamp Current (Min)	20 mA
Wattage Equivalent	9 W

Starting Time (Nom)	0.5 s
Warm-up time to 60% light	0.5 s
Power Factor (Fraction)	0.9
Voltage (Nom)	120-277 V
UL Type	UL Type B

Temperature	
T-Case Maximum (Nom)	131 °F

Controls and Dimming	
Dimmable	No

Mechanical and Housing	
Bulb Finish	Frosted
Bulb Material	Plastic
Product Length	5-3/4 inch
Bulb Shape	PL-S
Net Weight (Piece)	0.099 lb

Approval and Application	
Energy Saving Product	Yes
Approval Marks	RoHS compliance UL certificate
EU RoHS compliant	Yes

# PL-S

Ambient temperature range	-4 to +113 °F
---------------------------	---------------

## Application Conditions

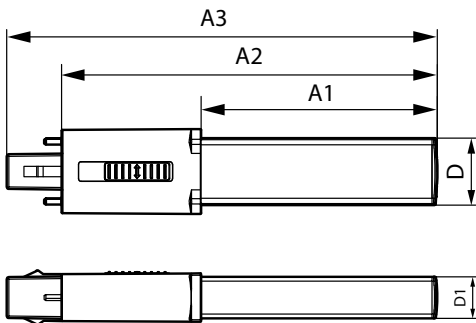
can it be used in closed luminaires	Yes
-------------------------------------	-----

## Product Data

Order product name	5PL-S/COR/9H-5CCT/MF5/P/2P 20/1
Full product name	5PL-S/COR/9H-5CCT/MF5/P/2P 20/1

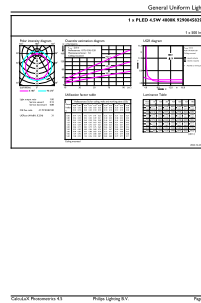
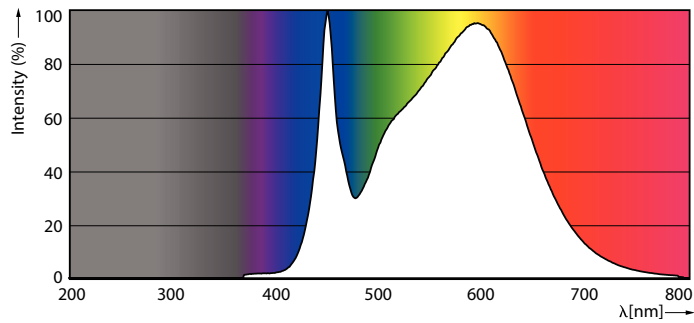
Order code	606566
Material Nr. (12NC)	929004582904
Numerator - Quantity Per Pack	1
EAN/UPC - Product/Case	046677606565
Numerator - Packs per outer box	20
EAN/UPC - Case	50046677606560

## Dimensional drawing



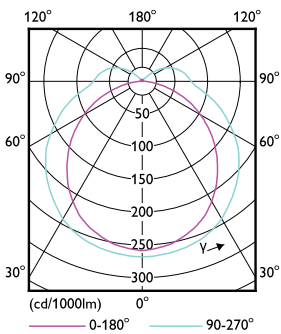
Product	D1	D	A1	A2	A3
5PL-S/COR/ 9H-5CCT/MF5/P/2P 20/1	5/8 inch	1-1/16 inch	3-5/8 inch	5-3/4 inch	6-9/16 inch

## Photometric data



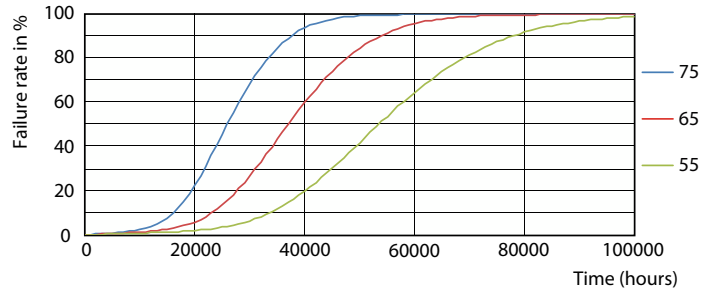
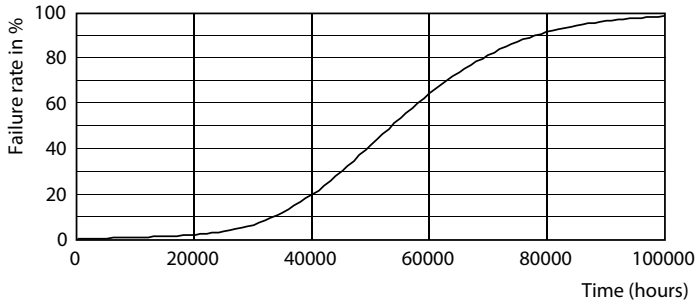
Spectral Power Distribution Colour - 5PL-S/COR/9H-5CCT/MF5/P/2P 20/1

General uniform lighting - 5PL-S/COR/9H-5CCT/MF5/P/2P 20/1

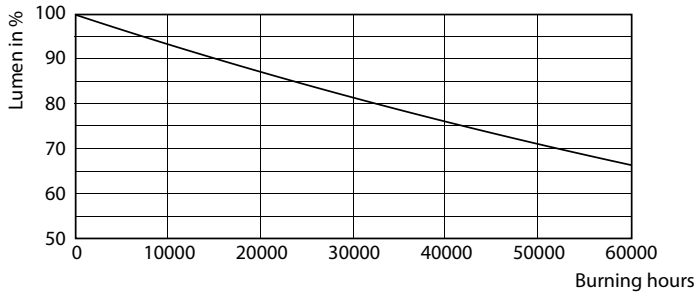


Light Distribution Diagram - 5PL-S/COR/9H-5CCT/MF5/P/2P 20/1

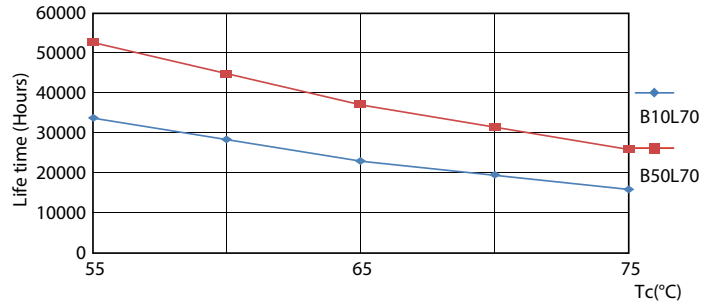
Lifetime



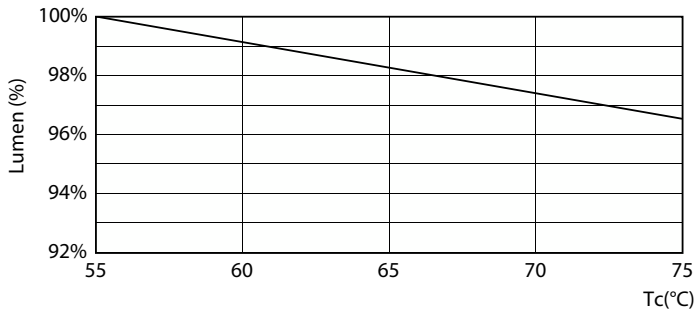
Life Expectancy Diagram



FailureRate



Lumen Maintenance Diagram - 5PL-S/COR/9H-5CCT/MF5/P/2P 20/1



LifetimeVsTc

Lumen Maintenance Diagram - 5PL-S/COR/9H-5CCT/MF5/P/2P 20/1

