

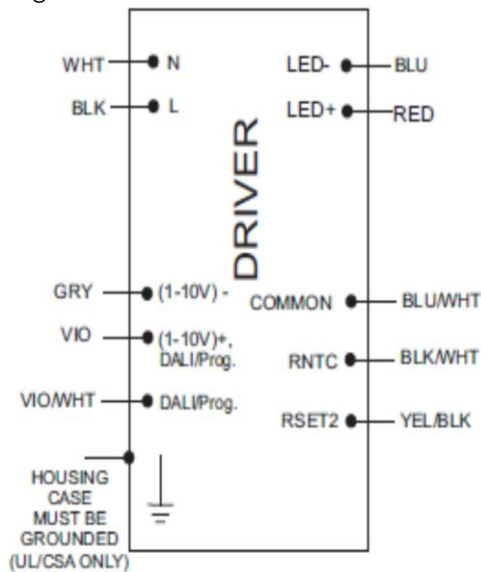
## 9290 007 10403

Brand Name	XITANIUM
Description	Xitanium 100W 0.53A Prog+ GL-Z sXt
Input Voltage	120 ~ 230 ~ 277V
Input Frequency	50/60Hz
RoHS	Yes
Status	Preliminary

### Electrical Specifications

Output Power (W)	Output Voltage (V)	Output Current (A)	Efficiency@ Max Load			Max Case Temp. (°C)	Input Current (Arms)			Max. Input Power (W)	Inrush Current (A <sub>in</sub> /50%-µs)			THD @ Max Load (%)	Power Factor @ Max Load	Surge Protection Common/Di ff (KV)	Weight (Lbs/kgs)
			120V	230V	277V		120 V	230 V	277 V		120 Vin	230 Vin	277 Vin				
100	94 ~ 189	0.10 ~ 0.53	89.5	92	92	80 °C	0.94	0.48	0.41	115	40 / 150	80 / 150	100 / 150	<20 See graph	>0.90 See graph	4/4	1.63/0.74
			120V	230V	277V		120 V	230 V	277 V		120 Vin	230 Vin	277 Vin				

### Wire Diagram



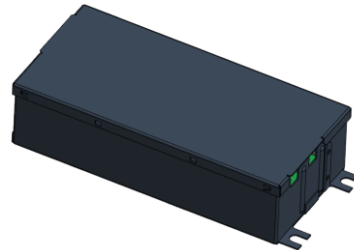
Input and output use lead-wires.  
Lead-wires are 18AWG 105C/600V solid copper.

### Lead Length

Standard Lead Length is 275 mm (±30mm) on all wires outside the can

Dimming Method	Dimming Range	Minimum Output Current (A)	Other Comments
1-10V Isolated	10% ~ 100%	0.035	Dimming source current: 150 µA (±3%)
DALI	1 ~ 254	10% ~ 100%	Linear or Logarithmic Variation
Amp Dimming	30% ~ 100%	0.035	Linear

### Enclosure



	(mm)
Case Length	(147.38)
Case Width	(70.00)
Case Height	(38.00)
Mounting Length	(155)
Mounting Width	(50.00)
Overall Length	(165.00)



## 9290 007 10403

Brand Name	XITANIUM
Description	Xitanium 100W 0.53A Prog+ GL-Z sXt
Input Voltage	120 ~ 230 ~ 277V
Input Frequency	50/60Hz
RoHS	Yes
Status	Preliminary

### Electrical Specifications

#### Product Data

<b>Order code</b>	929000710403
<b>Full product code</b>	929000710403
<b>Full product name</b>	XITANIUM 100W 0.53A Prog+ GL-Z sXt
<b>Net weight per piece</b>	0.74 KG / 1.63 lbs
<b>Interfaces</b>	1-10V Dimming, DALI, AmpDim, Integrated Dynadimmer, AOC(via Rset), MTP (via RNTC)
<b>Ambient Temp Range</b>	-40C to +55C
<b>Corresponding Tcase</b>	-15C to +80C
<b>0-10V Dimming Specifications</b>	150µA ± 3% source current from driver, Vdim > 14.5V to shutdown driver. See dim curve for detail.
<b>Line Voltage</b>	120-277V
<b>Line Current</b>	0.94A @ 120V, 0.48A @230V, 0.41A @ 277V
<b>Line Frequency</b>	50/60Hz
<b>Min. Mains voltage operational</b>	108 V [min]
<b>Max. Mains voltage operational</b>	305V [max]
<b>Life @ TC 70C</b>	Refer to graph below
<b>Life @ TC 80C</b>	Refer to graph below
<b>Suitable for Outdoor use?</b>	Yes
<b>Max TC</b>	80C
<b>Maximum ballast number on MCB 16A</b>	9 [max]
<b>Input Over-voltage</b>	Can survive input over-voltage stress of 320VAC for 48 hours and 350VAC for 2 hours
<b>Earth leakage current</b>	<=0.35mA
<b>Output Current ripple</b>	30% @ 530 mA (ripple = pk-pk/avg)
<b>THD total</b>	Refer to graph
<b>PF @ Max Load</b>	Refer to graph
<b>Wire Isolation</b>	All wires are Double isolated
<b>Isolation between input and output</b>	Basic
<b>Isolation towards housing</b>	Double
<b>Protections</b>	Short Circuit and Open Circuit Protection for LED + and LED-
<b>Standby power</b>	< 1.0W

Installation & Application Notes:

#### Section I – Physical Characteristics

- 1.1 LED Driver shall be installed inside an electrical enclosure
- 1.2 Wiring inside electrical enclosure shall comply with 600V/105°C rating or higher.