

**PHILIPS**

Retail display lighting

InteGrade gen 3



# Lighting products, brightening faces

Philips LED lighting for retail displays



# Flexibility for perfect lighting experience

## One portfolio, many solutions

The InteGrade gen 3 and high flux have replaced the successful InteGrade gen 2. The new expanded portfolio gives OEMs even more flexibility to select color temperature, CRI, lumen package and optics to suit specific applications. With its color rendering index (CRI) of 93, InteGrade provides a fantastic color experience with enhanced whites and vibrant colors. Color temperatures range from 3000 to 5600K and include premium white (PW) and WarmWhiteRed (WWR) for special applications.

## Maximum design flexibility and hassle-free installation

The miniaturized slim design, plug and play simplicity, wide range of engine lengths, color temperatures and accessories give you the flexibility to build a variety of innovative refrigeration systems with the modern aesthetics stores are looking for.

## Fewer components per installation

The ultra-thin InteGrade LED engines and fixtures are easily integrated into shelves, door frames, mullions and canopies. Philips also offers Philips Constant Voltage LED drivers.

All components come with a five-year warranty.

## Design simplicity

The standard engine lengths of 140, 575, 855, 1150 and 1430 mm and InteGrade fixture length of 1500 mm correspond with the common sizes for most applications. This reduces the number of components you need per installation. By combining different lengths, it's possible to illuminate every space. Design simplicity is assured with a range of mounting profiles, mounting clips, power cables and Philips Constant Voltage LED drivers. The accessories fit together for hassle-free installation.

## Light where it's needed

When mounted, the engines and fixtures are virtually out of sight, so the customer's attention remains focused on the merchandize. We have optimized optic systems for shelf, canopy and door lighting applications that ensure exceptional light distribution where it's needed. It also produces a continuous line of light without undesirable hot spots, glare or reflections on the merchandize. The result is brighter, more uniform product illumination, both horizontally and vertically.



Merchandize looks more appealing.

## Exceptionally long lifetime

Philips LEDs have minimal output degradation and color shift over time, so the light stays consistent throughout the long service life. Lifetime is an exceptional 50,000 hours. Note that InteGrade LED high flux gen 3 engines are not standalone and they might need to be integrated with a heatsink for thermal management to achieve the specified lifetime. The cabinet framework can be used for heatsinking. Our design-in service is available to support you.

## Key benefits of InteGrade

- Miniaturized slim design for aesthetic integration that ensures attention is focused on the displayed products.
- Enhanced whites and vivid colors thanks to premium white range with a typical CRI of 93.
- Natural colors with the standard color range thanks to LED with specially formulated CRI 90 LEDs.
- Revolutionary optics optimized per application to direct the light exactly where you want it.
- Uniform light distribution with narrow beam and uniform beam types for door and canopy lighting.
- Continuous line of light to eliminate undesirable hot spots, glare, reflections.
- Consistent light throughout an extremely long life (50,000 hours) thanks to minimal output degradation and virtually no color shift over time.
- Plug and play solution gives you the possibility to use continuous strips by daisy chaining different lengths to create a variety of innovative systems with the style, modernity and functionality stores need.




“InteGrade helps you to build innovative refrigeration systems with the **style, performance and cost effectiveness** retail outlets need.”

# Philips InteGrade LED products

## InteGrade LED system gen 3 (premium white range)

InteGrade LED engines have been designed to match the most common application lengths, reducing the number of components needed per installation; yet maintaining the outstanding flexibility that its modular approach offers, enabling the creation of odd size lighting solutions to match every project specification. Thanks to a range of engine lengths, fixtures, accessories like mounting profiles, mounting clips, power cables, and Philips Constant Voltage LED drivers the InteGrade LED system gen 3 offers maximum design flexibility and plug-and-play simplicity to enable a vast variety of innovative systems with style, modernity and functionality according to the needs of the stores.


### For shelf lighting InteGrade engine value premium white gen 3 Product specification



Product name	Power consumption	Lumen	Color Rendering Index	Correlated Color Temperature*	Product code
	W, typical ± 20%	lm, typical ± 20%	CRI, typical	K	(12NC)
InteGrade engine Va 140mm 930 PW G3	0,8	85	93	3000	929001567506
InteGrade engine Va 575mm 930 PW G3	3,4	380	93	3000	929001567606
InteGrade engine Va 855mm 930 PW G3	4,9	550	93	3000	929001567706
InteGrade engine Va 1150mm 930 PW G3	6,7	760	93	3000	929001567806
InteGrade engine Va 140mm 940 PW G3	0,8	90	93	4000	929001567906
InteGrade engine Va 575mm 940 PW G3	3,4	420	93	4000	929001568006
InteGrade engine Va 855mm 940 PW G3	4,9	600	93	4000	929001568106
InteGrade engine Va 1150mm 940 PW G3	6,7	840	93	4000	929001568206

\* Correlated color temperature within 5 SDCM range


### InteGrade engine vision premium white gen 3 Product specification



Product name	Power consumption	Lumen	Color Rendering Index	Correlated Color Temperature*	Product code
	W, typical ± 20%	lm, typical ± 20%	CRI, typical	K	(12NC)
InteGrade engine Vi 140mm 930 PW G3	1,6	170	93	3000	929001568306
InteGrade engine Vi 575mm 930 PW G3	6,9	750	93	3000	929001568406
InteGrade engine Vi 855mm 930 PW G3	10,1	1090	93	3000	929001568506
InteGrade engine Vi 1150mm 930 PW G3	13,8	1500	93	3000	929001568606
InteGrade engine Vi 140mm 940 PW G3	1,6	180	93	4000	929001568706
InteGrade engine Vi 575mm 940 PW G3	6,9	800	93	4000	929001568806
InteGrade engine Vi 855mm 940 PW G3	10,1	1160	93	4000	929001568906
InteGrade engine Vi 1150mm 940 PW G3	13,8	1600	93	4000	929001569006

\* Correlated color temperature within 5 SDCM range


### For canopy lighting InteGrade engine uniform beam value premium white gen 3 Product specification



Product name	Power consumption	Lumen	Color Rendering Index	Correlated Color Temperature*	Product code
	W, typical ± 20%	lm, typical ± 20%	CRI, typical	K	(12NC)
InteGrade engine UB Va 855mm 930 PW G3	9,6	940	93	3000	929001626606
InteGrade engine UB Va 1150mm 930 PW G3	12,8	1250	93	3000	929001626806
InteGrade engine UB Va 855mm 940 PW G3	9,6	1025	93	4000	929001626706
InteGrade engine UB Va 1150mm 940 PW G3	12,8	1350	93	4000	929001626906

\* Correlated color temperature within 5 SDCM range

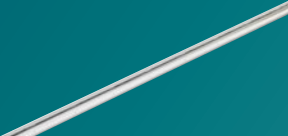
### InteGrade engine uniform beam vision premium white gen 3 Product specification



Product name	Power consumption	Lumen	Color Rendering Index	Correlated Color Temperature*	Product code
	W, typical ± 20%	lm, typical ± 20%	CRI, typical	K	(12NC)
InteGrade engine UB Vi 140mm 930 PW G3	2,5	250	93	3000	929001572506
InteGrade engine UB Vi 575mm 930 PW G3	10	1000	93	3000	929001569706
InteGrade engine UB Vi 855mm 930 PW G3	15	1500	93	3000	929001569806
InteGrade engine UB Vi 1150mm 930 PW G3	20	2000	93	3000	929001569906
InteGrade engine UB Vi 140mm 940 PW G3	2,5	280	93	4000	929001572606
InteGrade engine UB Vi 575mm 940 PW G3	10	1100	93	4000	929001570006
InteGrade engine UB Vi 855mm 940 PW G3	15	1650	93	4000	929001570106
InteGrade engine UB Vi 1150mm 940 PW G3	20	2200	93	4000	929001570206

\* Correlated color temperature within 5 SDCM range

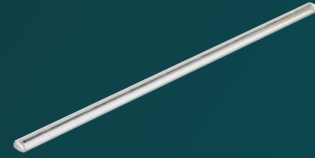
### For chillers with doors InteGrade engine narrow beam value premium white gen 3 Product specification



Product name	Power consumption	Lumen	Color Rendering Index	Correlated Color Temperature*	Product code
	W, typical ± 20%	lm, typical ± 20%	CRI, typical	K	(12NC)
InteGrade engine NB Va 140mm 930 PW G3	1	115	93	3000	929001569106
InteGrade engine NB Va 575mm 930 PW G3	4,5	500	93	3000	929001569206
InteGrade engine NB Va 1430mm 930 PW G3	11	1230	93	3000	929001569306
InteGrade engine NB Va 140mm 940 PW G3	1	120	93	4000	929001569406
InteGrade engine NB Va 575mm 940 PW G3	4,5	530	93	4000	929001569506
InteGrade engine NB Va 1430mm 940 PW G3	11	1300	93	4000	929001569606

\* Correlated color temperature within 5 SDCM range

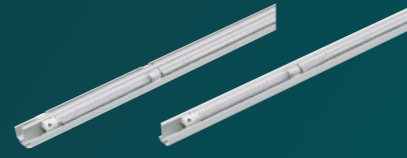
**InteGrade engine narrow beam vision premium white gen 3**  
Product specification



Product name	Power consumption	Lumen	Color Rendering Index	Correlated Color Temperature*	Product code
	W, typical ± 20%	lm, typical ± 20%	CRI, typical	K	(12NC)
InteGrade engine NB Vi 140mm 930 PW G3	2,7	280	93	3000	929001605406
InteGrade engine NB Vi 575mm 930 PW G3	10,9	1146	93	3000	929001681106
InteGrade engine NB Vi 1430mm 930 PW G3	27,2	2850	93	3000	929001571706
InteGrade engine NB Vi 140mm 940 PW G3	2,7	300	93	4000	929001605506
InteGrade engine NB Vi 575mm 940 PW G3	10,9	1200	93	4000	929001681206
InteGrade engine NB Vi 1430mm 940 PW G3	27,2	3100	93	4000	929001571806

\* Correlated color temperature within 5 SDCM range  
PW: premium white

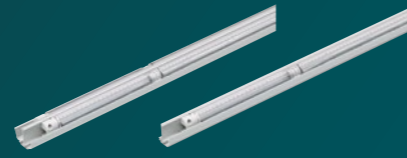
**InteGrade fixture narrow beam value premium white gen 3**  
Product specification



Product name	Power consumption	Lumen	Color Rendering Index	Correlated Color Temperature*	Product code
	W, typical ± 20%	lm, typical ± 20%	CRI, typical	K	(12NC)
InteGrade F NB Va 1500mm 930 PW SD G3	11	1230	93	3000	929001572006
InteGrade F NB Va 1500mm 930 PW CTR G3	22	2460	93	3000	929001572106
InteGrade F NB Va 1500mm 940 PW SD G3	11	1300	93	4000	929001572206
InteGrade F NB Va 1500mm 940 PW CTR G3	22	2600	93	4000	929001572306

\* Correlated color temperature within 5 SDCM range

**InteGrade fixture narrow beam vision premium white gen 3**  
Product specification



Product name	Power consumption	Lumen	Color Rendering Index	Correlated Color Temperature*	Product code
	W, typical ± 20%	lm, typical ± 20%	CRI, typical	K	(12NC)
InteGrade F NB Vi 1500mm 930 PW SD G3	26,2	2850	93	3000	929001570306
InteGrade F NB Vi 1500mm 930 PW CTR G3	52,4	5700	93	3000	929001570406
InteGrade F NB Vi 1500mm 940 PW SD G3	26,3	3100	93	4000	929001570506
InteGrade F NB Vi 1500mm 940 PW CTR G3	52,6	6200	93	4000	929001570606

\* Correlated color temperature within 5 SDCM range

**InteGrade engine high flux premium white gen 3**  
Product specification



Product name	Power consumption	Lumen	Color Rendering Index	Correlated Color Temperature*	Product code
	W, typical ± 20%	lm, typical ± 20%	CRI, typical	K	(12NC)
InteGrade engine HF 140mm 930 PW G3	4,4	400	93	3000	929001605606
InteGrade engine HF 575mm 930 PW G3	17,5	1575	93	3000	929001605706
InteGrade engine HF 1150mm 930 PW G3	34,9	3150	93	3000	929001605806
InteGrade engine HF 140mm 940 PW G3	4,0	400	93	4000	929001605906
InteGrade engine HF 575mm 940 PW G3	16,1	1575	93	4000	929001606006
InteGrade engine HF 1150mm 940 PW G3	32,2	3150	93	4000	929001606106

\* Correlated color temperature within 5 SDCM range

**InteGrade LED system premium white gen 3**

Plug and play Philips constant voltage driver list	Product code
	(12NC)
LED transformer 60W 24VDC 120V PP	929002106080
LED transformer 60W 24VDC 220-240V PP	929002106280
LED transformer 100W 24VDC 120V PP	929002106180
LED transformer 100W 24VDC 220-240V PP	929002106380
LED transformer 150W 24VDC 220-240V PP	929002106480

Non-plug and play Philips constant voltage drivers	Product code
	(12NC)
LED power driver 20W 24VDC 100-240V	929000654006
LED power driver 80W 24VDC 120-240V	929001669406
LED power driver 100W 24VDC 120-240V	929001669506
LED power driver 150W 24VDC 120-240V	929002101980
LED power driver 240W 24VDC 120-240V	929002102080
LED transformer 20W 24VDC 120-277V	929002105580
LED transformer 40W 24VDC 120-277V	929002105680
LED transformer 60W 24VDC 120-277V	929002105780
LED transformer 60W 24VDC 220-240V	913710032267
LED transformer 100W 24VDC 120-277V	929002105880
LED transformer 120W 24VDC 220-240V	913710032567
LED transformer 150W 24VDC 220-240V	929002105980
Xitanium 77W 100-277V 3.2A XI077C320V024FNS1M *	929001708113
Xitanium 100W 100-277V 4.1A XI100C410V024FNS1M*	929000771913
LED driver outdoor 100W 100-240V 24V**	929000485303

\* Only for NAM region  
\*\* Only for Japan

Accessories	Product code
	(12NC)
<b>Clips</b>	
InteGrade mounting clip shelf arm V2	929000957806
InteGrade engine clip shelf arm G2	929001516006
InteGrade engine mounting clip G2	929001516106
InteGrade mounting clip under shelf	929000643903
InteGrade engine clip magnetic	929001624606
InteGrade mounting clip canopy	929001571106
InteGrade engine clip mullion side	929001624506
InteGrade engine clip mullion center	929001624406
InteGrade mounting clip for T style prof	929000853213
<b>Profiles</b>	
InteGrade profile 875mm(34")	929000643413
InteGrade profile 1175mm(46")	929000643313
InteGrade profile 2000mm(79")	929000654413
InteGrade profile 2000mm(79") F style	929000654313
InteGrade profile 2000mm(79") L style	929000654513

InteGrade prof 2000mm(79") T style CTR	929000853013
InteGrade profile 2000mm(79") T style SD	929000853113
InteGrade profile 2356mm(93") M style	929000871313
<b>Power cables - to connect engine to driver</b>	
InteGrade power cable 0.7m white	929001625306
InteGrade power cable 1m(39") black	929000641014
InteGrade power cable 2.5m(98") black	929000641114
InteGrade cable 1m(39") black angle	929000644614
InteGrade cable 2.5m(98") black angle	929000644814
InteGrade power cable 1m(39") white	929000645614
InteGrade power cable 1.85m white	929001625206
InteGrade power cable 2.5m(98") white	929000644514
InteGrade cable 1m(39") white angle	929000644714
InteGrade cable 2.5m(98") white angle	929000644914
InteGrade power cable 6m white	929001624806
InteGrade spacer cable 113mm white	929001625106
InteGrade spacer cable 0.3m black	929001625006
InteGrade spacer cable 0.5m black	929000645014
InteGrade spacer cable 0.5m white	929000645114
InteGrade spacer cable M 0.7m 5.5c black	929001624706
InteGrade extension cab 1.5m(59") black	929000874413
InteGrade Y cable black	929000874313
<b>Other accessories</b>	
InteGrade engine lock inline	929000643713
InteGrade connector	929000959106
InteGrade magnet for M style profile	929000871413
InteGrade rotational bracket	929000874613

RDL track system	
RDL track	
RDL track 1800mm gr	929002113606
RDL track 1200mm gr	929002113706
RDL track 600mm gr	929002113806
<b>Power cables - to connect the RDL track to the driver</b>	
InteGrade track powercable 1.5m gr	929002113906
InteGrade track powercable 1.5m gr angle	929002114006
<b>Track cables - to connect the engines to the RDL track</b>	
InteGrade track cable M 0.7m gr angle	929002114106
InteGrade track cable 0.7m gr angle	929002114206
InteGrade track cable 0.3m transp angle	929002114306
InteGrade track cable 0.4m transp angle	929002114406
InteGrade track cable 0.5m transp angle	929002114506

\* gr = Gray, M = Magnetic, transp = Transparent

## Philips InteGrade LED products

### InteGrade LED system gen 3 (standard color range)

InteGrade LED engines have been designed to match the most common application lengths, reducing the number of components needed per installation; yet maintaining the outstanding flexibility that its modular approach offers, enabling the creation of odd size lighting solutions to match every project specification. Thanks to a range of engine lengths, fixtures, accessories like mounting profiles, mounting clips, power cables, and Philips Constant Voltage LED drivers the InteGrade LED system gen 3 offers maximum design flexibility and plug-and-play simplicity to enable a vast variety of innovative systems with style, modernity and functionality according to the needs of the stores.

#### For shelf lighting InteGrade engine value gen 3 Product specification

Product name	Power consumption	Lumen	Color Rendering Index	Correlated Color Temperature*	Product code
	W, typical ± 20%	lm, typical ± 20%	CRI, min	K	(12NC)
InteGrade engine Va 140mm 930 G3	0,9	85	90	3000	929001574606
InteGrade engine Va 575mm 930 G3	3,9	380	90	3000	929001574706
InteGrade engine Va 855mm 930 G3	5,7	550	90	3000	929001574806
InteGrade engine Va 1150mm 930 G3	7,8	760	90	3000	929001574906
InteGrade engine Va 140mm 935 G3	0,8	80	90	3500	929001641006
InteGrade engine Va 575mm 935 G3	3,6	355	90	3500	929001641106
InteGrade engine Va 855mm 935 G3	5,2	510	90	3500	929001641206
InteGrade engine Va 1150mm 935 G3	7,2	710	90	3500	929001641306
InteGrade engine Va 140mm 940 G3	0,9	90	90	4000	929001575006
InteGrade engine Va 575mm 940 G3	3,9	420	90	4000	929001575106
InteGrade engine Va 855mm 940 G3	5,7	600	90	4000	929001575206
InteGrade engine Va 1150mm 940 G3	7,8	840	90	4000	929001575306
InteGrade engine Va 140mm 956 G3	1,0	105	90	5600	929001617906
InteGrade engine Va 575mm 956 G3	3,9	420	90	5600	929001618006
InteGrade engine Va 855mm 956 G3	5,8	630	90	5600	929001618106
InteGrade engine Va 1150mm 956 G3	7,8	840	90	5600	929001618206
InteGrade engine Va 140mm WWR G3	0,7	70	90		929001575406
InteGrade engine Va 575mm WWR G3	3,2	310	90		929001575506
InteGrade engine Va 855mm WWR G3	4,7	450	90		929001575606
InteGrade engine Va 1150mm WWR G3	6,4	620	90		929001575706
InteGrade engine Va 855mm XR G3	5	380	80		929001680106
InteGrade engine Va 1150mm XR G3	6,6	520	80		929001680206

\* Correlated color temperature within 5 SDCM range

#### InteGrade engine vision gen 3 Product specification

Product name	Power consumption	Lumen	Color Rendering Index	Correlated Color Temperature*	Product code
	W, typical ± 20%	lm, typical ± 20%	CRI, min	K	(12NC)
InteGrade engine Vi 140mm 930 G3	1,7	170	90	3000	929001575806
InteGrade engine Vi 575mm 930 G3	7,3	750	90	3000	929001575906
InteGrade engine Vi 855mm 930 G3	10,7	1090	90	3000	929001576006
InteGrade engine Vi 1150mm 930 G3	14,6	1500	90	3000	929001576106
InteGrade engine Vi 140mm 935 G3	1,6	155	90	3500	929001641406
InteGrade engine Vi 575mm 935 G3	6,9	680	90	3500	929001641506
InteGrade engine Vi 855mm 935 G3	10,1	990	90	3500	929001641606
InteGrade engine Vi 1150mm 935 G3	13,8	1365	90	3500	929001641706
InteGrade engine Vi 140mm 940 G3	1,7	180	90	4000	929001576206
InteGrade engine Vi 575mm 940 G3	7,3	800	90	4000	929001576306
InteGrade engine Vi 855mm 940 G3	10,7	1160	90	4000	929001576406
InteGrade engine Vi 1150mm 940 G3	14,6	1600	90	4000	929001576506
InteGrade engine Vi 140mm 956 G3	1,9	200	90	5600	929001618306
InteGrade engine Vi 575mm 956 G3	7,4	800	90	5600	929001618406
InteGrade engine Vi 855mm 956 G3	11,1	1200	90	5600	929001618506
InteGrade engine Vi 1150mm 956 G3	14,9	1600	90	5600	929001618606
InteGrade engine Vi 140mm WWR G3	1,5	150	90		929001576606
InteGrade engine Vi 575mm WWR G3	6,6	650	90		929001576706
InteGrade engine Vi 855mm WWR G3	9,7	950	90		929001576806
InteGrade engine Vi 1150mm WWR G3	13,2	1300	90		929001576906
InteGrade engine Vi 855mm XR G3	9,8	790	80		929001494906
InteGrade engine Vi 1150mm XR G3	13,4	1060	80		929001495006

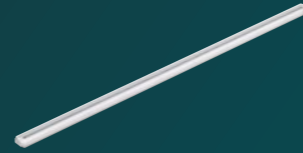
\* Correlated color temperature within 5 SDCM range

#### For canopy lighting InteGrade engine uniform beam value gen 3 Product specification

Product name	Power consumption	Lumen	Color Rendering Index	Correlated Color Temperature*	Product code
	W, typical ± 20%	lm, typical ± 20%	CRI, min	K	(12NC)
InteGrade engine UB Va 855mm 930 G3	9,4	890	90	3000	929001603706
InteGrade engine UB Va 1150mm 930 G3	13	1200	90	3000	929001603806
InteGrade engine UB Va 855mm 940 G3	9,4	970	90	4000	929001603906
InteGrade engine UB Va 1150mm 940 G3	13	1300	90	4000	929001604006
InteGrade engine UB Va 855mm WWR G3	7,9	700	90		929001604106
InteGrade engine UB Va 1150mm WWR G3	11	900	90		929001604206

\* Correlated color temperature within 5 SDCM range

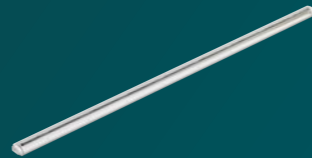
**InteGrade engine uniform beam vision gen 3**  
Product specification



Product name	Power consumption	Lumen	Color Rendering Index	Correlated Color Temperature*	Product code
	W, typical ± 20%	lm, typical ± 20%	CRI, min	K	(12NC)
InteGrade engine UB Vi 140mm 930 G3	2,6	240	90	3000	929001578506
InteGrade engine UB Vi 575mm 930 G3	10	950	90	3000	929001578606
InteGrade engine UB Vi 855mm 930 G3	15	1450	90	3000	929001578706
InteGrade engine UB Vi 1150mm 930 G3	20	1950	90	3000	929001578806
InteGrade engine UB Vi 140mm 935 G3	2,4	245	90	3500	929001642106
InteGrade engine UB Vi 575mm 935 G3	9,6	990	90	3500	929001642006
InteGrade engine UB Vi 855mm 935 G3	14,4	1500	90	3500	929001641906
InteGrade engine UB Vi 1150mm 935 G3	19,2	1975	90	3500	929001641806
InteGrade engine UB Vi 140mm 940 G3	2,6	260	90	4000	929001578906
InteGrade engine UB Vi 575mm 940 G3	10	1050	90	4000	929001579006
InteGrade engine UB Vi 855mm 940 G3	15	1600	90	4000	929001579106
InteGrade engine UB Vi 1150mm 940 G3	20	2100	90	4000	929001579206
InteGrade engine UB Vi 1150mm 956 G3	21,7	2200	90	5600	929001498206
InteGrade engine UB Vi 140mm WWR G3	1,9	175	90		929001579306
InteGrade engine UB Vi 575mm WWR G3	7,5	700	90		929001579406
InteGrade engine UB Vi 855mm WWR G3	11	1050	90		929001579506
InteGrade engine UB Vi 1150mm WWR G3	15	1400	90		929001579606
InteGrade engine UB Vi 855mm XR G3	11,3	850	80		929001680306
InteGrade engine UB Vi 1150mm XR G3	15	1150	80		929001680406

\* Correlated color temperature within 5 SDCM range

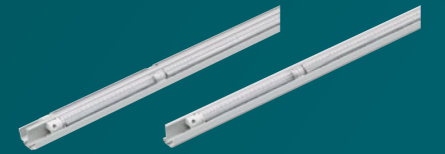
**For chillers with doors**  
**InteGrade engine narrow beam value gen 3**  
Product specification



Product name	Power consumption	Lumen	Color Rendering Index	Correlated Color Temperature*	Product code
	W, typical ± 20%	lm, typical ± 20%	CRI, min	K	(12NC)
InteGrade engine NB Va 140mm 930 G3	1,2	125	90	3000	929001577006
InteGrade engine NB Va 575mm 930 G3	4,8	500	90	3000	929001577106
InteGrade engine NB Va 1430mm 930 G3	11,9	1230	90	3000	929001577206
InteGrade engine NB Va 140mm 940 G3	1,2	130	90	4000	929001577306
InteGrade engine NB Va 575mm 940 G3	4,8	530	90	4000	929001577406
InteGrade engine NB Va 1430mm 940 G3	11,9	1300	90	4000	929001577506
InteGrade engine NB Va 140mm 956 G3	1,1	120	90	5600	929001618706
InteGrade engine NB Va 575mm 956 G3	4,3	480	90	5600	929001618806
InteGrade engine NB Va 1430mm 956 G3	10,7	1200	90	5600	929001618906
InteGrade engine NB Va 140mm WWR G3	1,3	125	90		929001577606
InteGrade engine NB Va 575mm WWR G3	5,1	500	90		929001577706
InteGrade engine NB Va 1430mm WWR G3	12,7	1230	90		929001577806
InteGrade engine NB Va 1430mm XR G3	12,8	1075	80		929001680506

\* Correlated color temperature within 5 SDCM range

**InteGrade fixture narrow beam value gen 3**  
Product specification



Product name	Power consumption	Lumen	Color Rendering Index	Correlated Color Temperature*	Product code
	W, typical ± 20%	lm, typical ± 20%	CRI, min	K	(12NC)
InteGrade F NB Va 1500mm 930 SD G3	11,7	1230	90	3000	929001577906
InteGrade F NB Va 1500mm 930 CTR G3	23,4	2460	90	3000	929001578006
InteGrade F NB Va 1500mm 940 SD G3	11,7	1300	90	4000	929001578106
InteGrade F NB Va 1500mm 940 CTR G3	23,4	2600	90	4000	929001578206
InteGrade F NB Va 1500mm 956 SD G3	10,7	1200	90	5600	929001619006
InteGrade F NB Va 1500mm 956 CTR G3	21,3	2400	90	5600	929001619106
InteGrade F NB Va 1500mm WWR SD G3	12,7	1230	90		929001578306
InteGrade F NB Va 1500mm WWR CTR G3	25,5	2460	90		929001578406
InteGrade F NB Va 1500mm XR SD G3	12,8	1075	80		929001680606
InteGrade F NB Va 1500mm XR CTR G3	25,7	2150	80		929001680706

\* Correlated color temperature within 5 SDCM range

**For canopy and chillers with doors**  
**InteGrade engine high flux gen 3**  
Product specification



Product name	Power consumption	Lumen	Color Rendering Index	Correlated Color Temperature*	Product code
	W, typical ± 20%	lm, typical ± 20%	CRI, min	K	(12NC)
InteGrade engine HF 140mm WWR G3	4,4	375	90		929001622706
InteGrade engine HF 575mm WWR G3	17,5	1500	90		929001622806
InteGrade engine HF 1150mm WWR G3	35,1	3000	90		929001622906

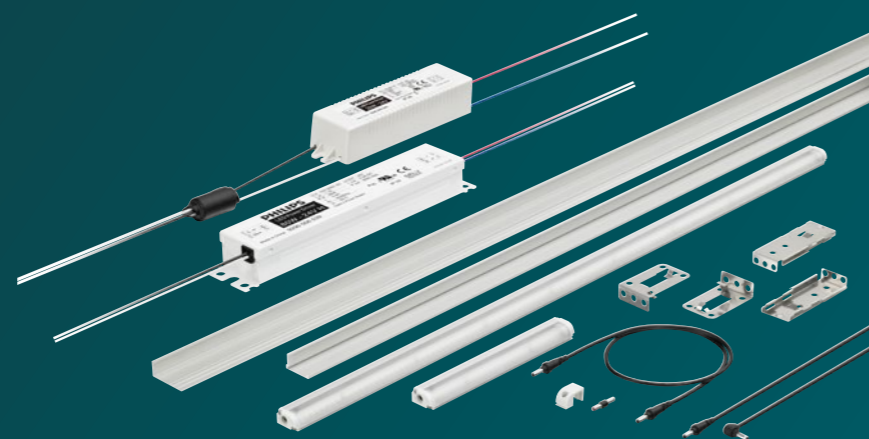
\* Correlated color temperature within 5 SDCM range

Plug and play Philips constant voltage driver list	Product code
	(12NC)
LED transformer 60W 24VDC 120V PP	929002106080
LED transformer 60W 24VDC 220-240V PP	929002106280
LED transformer 100W 24VDC 120V PP	929002106180
LED transformer 100W 24VDC 220-240V PP	929002106380
LED transformer 150W 24VDC 220-240V PP	929002106480

Non-plug and play Philips constant voltage drivers	Product code
	(12NC)
LED power driver 20W 24VDC 100-240V	929000654006
LED power driver 80W 24VDC 120-240V	929001669406
LED power driver 100W 24VDC 120-240V	929001669506
LED power driver 150W 24VDC 120-240V	929002101980
LED power driver 240W 24VDC 120-240V	929002102080
LED transformer 20W 24VDC 120-277V	929002105580
LED transformer 40W 24VDC 120-277V	929002105680
LED transformer 60W 24VDC 120-277V	929002105780
LED transformer 60W 24VDC 220-240V	913710032267
LED transformer 100W 24VDC 120-277V	929002105880
LED transformer 120W 24VDC 220-240V	913710032567
LED transformer 150W 24VDC 220-240V	929002105980
Xitanium 77W 100-277V 3.2A XI077C320V024FNS1M *	929001708113
Xitanium 100W 100-277V 4.1A XI100C410V024FNS1M*	929000771913
LED driver outdoor 100W 100-240V 24V**	929000485303

\* Only for NAM region

\*\* Only for Japan



Accessories	Product code
	(12NC)
<b>Clips</b>	
InteGrade mounting clip shelf arm V2	929000957806
InteGrade engine clip shelf arm G2	929001516006
InteGrade engine mounting clip G2	929001516106
InteGrade mounting clip under shelf	929000643903
InteGrade engine clip magnetic	929001624606
InteGrade mounting clip canopy	929001571106
InteGrade engine clip mullion side	929001624506
InteGrade engine clip mullion center	929001624406
InteGrade mounting clip for T style prof	929000853213
<b>Profiles</b>	
InteGrade profile 875mm(34")	929000643413
InteGrade profile 1175mm(46")	929000643313
InteGrade profile 2000mm(79")	929000654413
InteGrade profile 2000mm(79") F style	929000654313
InteGrade profile 2000mm(79") L style	929000654513
InteGrade prof 2000mm(79") T style CTR	929000853013
InteGrade profile 2000mm(79") T style SD	929000853113
InteGrade profile 2356mm(93") M style	929000871313
<b>Power cables - to connect engine to driver</b>	
InteGrade power cable 0.7m white	929001625306
InteGrade power cable 1m(39") black	929000641014
InteGrade power cable 2.5m(98") black	929000641114
InteGrade cable 1m(39") black angle	929000644614
InteGrade cable 2.5m(98") black angle	929000644814
InteGrade power cable 1m(39") white	929000645614
InteGrade power cable 1.85m white	929001625206
InteGrade power cable 2.5m(98") white	929000644514
InteGrade cable 1m(39") white angle	929000644714
InteGrade cable 2.5m(98") white angle	929000644914

Accessories	Product code
	(12NC)
InteGrade power cable 6m white	929001624806
InteGrade spacer cable 113mm white	929001625106
InteGrade spacer cable 0.3m black	929001625006
InteGrade spacer cable 0.5m black	929000645014
InteGrade spacer cable 0.5m white	929000645114
InteGrade spacer cable M 0.7m 5.5c black	929001624706
InteGrade extension cab 1.5m(59")black	929000874413
InteGrade Y cable black	929000874313
<b>Other accessories</b>	
InteGrade engine lock inline	929000643713
InteGrade connector	929000959106
InteGrade magnet for M style profile	929000871413
InteGrade rotational bracket	929000874613
<b>RDL track system</b>	
<b>RDL track</b>	
RDL track 1800mm gr	929002113606
RDL track 1200mm gr	929002113706
RDL track 600mm gr	929002113806
<b>Power cables – to connect the RDL track to the driver</b>	
InteGrade track powercable 1.5m gr	929002113906
InteGrade track powercable 1.5m gr angle	929002114006
<b>Track cables – to connect the engines to the RDL track</b>	
InteGrade track cable M 0.7m gr angle	929002114106
InteGrade track cable 0.7m gr angle	929002114206
InteGrade track cable 0.3m transp angle	929002114306
InteGrade track cable 0.4m transp angle	929002114406
InteGrade track cable 0.5m transp angle	929002114506

\* gr = Gray, M = Magnetic, transp = Transparent