



The most flexible, programmable LED Driver on the market.

- Programmable Power
- Wide Operating Window
- Flicker Free Dimming
- Quick and Easy Programming

A single platform driver that can address both simple and complex needs.

AFLEX Series

UNPARALLELED ABILITY TO PROGRAM THE DRIVER'S POWER!



WE DRIVE LIGHT



- Program Power
- Output Current
- Dimming Curve
- Dim-to-Off
- Auxiliary Output
- NTC Settings
- Ultimate Design Flexibility
- Significant SKU elimination

The **AFLEX Series** of Programmable Drivers offers the widest operating window in the industry with 0-10V dimming. With easy programmable options and exceptional dimming performance, the AFLEX provides customers with the highest level of flexibility and performance available in a single driver.

The AFLEX platform offers the unparalleled ability to program the driver's power, in addition to the output current, dimming curve, dim-to-off functionality, NTC settings and more -- all while maintaining high efficiency over the programmable range. This unique technological advancement enables both ultimate design flexibility and significant SKU elimination.



A single platform driver that can address both simple and complex needs.

The **deepest dimming available** in the industry



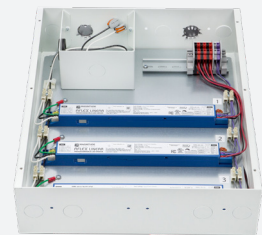
With the **AFLEX Series**, you can achieve smooth deep dimming down to 0.1% with full dim-to-off functionality using any standard market 0-10V dimmer. Our AFLEX drivers utilize advanced technology to achieve smooth, flicker-free Title 24 compliant dimming across the entire dimming range.

- 0-10V Dimming Flicker-Free – Dim Down to 0.1% with 1mA Step Programming
- Dim-To-Off Capability

- Options for multi-channel surface or recessed UL Listed Junction Box solutions (2-9 channels)
- 16 gauge powder coated galvanized steel junction box includes multiple 1¹/₈" knockouts and comes pre-wired for quick and easy installation.
- Compliant with Title 24 Requirements*
- UL Listed 8750, Class 2





AFLEX COMPACT
2 to 9 channel
configurations
3-57VDC



AFLEX LINEAR
2 to 7 channel
configurations
3-57VDC or 3-50VDC

ONE DRIVER... Multiple Solutions

Manufacturer	MAGNITUDE LIGHTING	Philips	ERP	EldoLED	Osram	Hatch
Model Series	AFLEX COMPACT	Xitanium	ESM SERIES	SOLOdriver	OTi	XAC, XRC
Model P/N	 <p>PROGRAMMABLE UP TO 60W</p>	XI025C100V036DNMXM XI1025C100V036DNM1M XI050C140V054DSM1 XI050C140V054DSM5	ESM050W ESM030W ESM020W ESM060W	SOLOdriver 10W SOLOdriver 20W SOLOdriver 30W SOLOdriver 50W	OTi25W OTi40W OTi55W	XAC16-0350Z-UNV-I XAC32-0700Z-UNV-I XAC34-1050Z-UNV-I XRC16-0350Z-UNV-I XRC32-0700Z-UNV-I XRC34-1050Z-UNV-I
Manufacturer	MAGNITUDE LIGHTING	Philips	ULT	EldoLED	Osram	TRP
Model Series	AFLEX LINEAR	Xitanium	EVERLINE Linear	SOLOdriver	OTi	XAC, XRC
Model P/N	 <p>PROGRAMMABLE UP TO 100W</p>	X1030C090V054PST1 X1040C110V054PST2 X1050C140V054PST X1050C140V054PST2 X1075C200V054XPT1	D700C30 D10CC30 D10CC55 D15CC55 D21CC80	SOLOdriver 50W SOLOdriver 75W	OTi20W OTi30W OTi48W OTi50W OTi85W	S030W-052C1050 S040W-028C1400 S050W-052C1400 S075W-038C2000

One AFLEX = Expansive SKU Coverage

With the **AFLEX Series** you minimize inventory with a single driver that can be programmed to meet your specific needs. The **AFLEX Series** provides the essential tools that every designer or contractor needs in their toolbox. With less than 4 price points to manage, you can now meet multiple needs while minimizing inventory. And with our proprietary FLEXTTool, you can simply program the AFLEX driver on-site as needed for a wide variety of configurations. This is a Class P driver and an ideal replacement component that provides extra years of life to existing lighting fixtures.



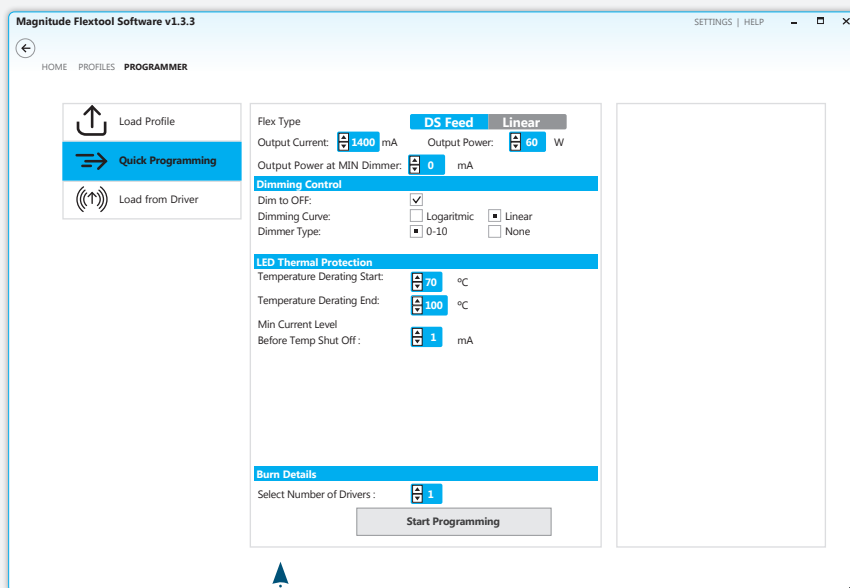
Program Power with High Efficiency



With **FlexTool**, customers can quickly and easily configure multiple parameters of the driver in the shop or in the field. Our programming is one of the easiest in the industry and can be done in **less than one second**.

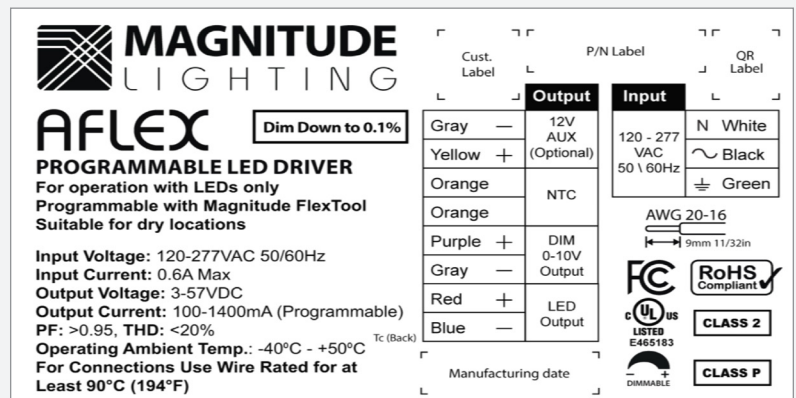
Windows based PC + USB Programming Tool
Parameters Set Via FlexTool Software

Tap to Program
Print Label & Go



- Wireless RFID Programming
- Quickly and easily configure multiple parameters of the driver without applying power
 - Input Power in Watts
 - Output Current in mA
 - Dimming Curve
 - Dim-to-Off Functionality
 - NTC Settings and More
 - Aux (Linear Version)

The FlexTool Software is a simple and intuitive program that allows you to adjust all the parameters needed to drive your lighting solution with more control and efficiency.



AFLEX SERIES

The **AFLEX Series** delivers constant lumen output and operates with up to 90% efficiency – one of the highest ratings in the industry. In addition, these technologically advanced drivers utilize a NTC LED temperature sensor to reduce LED fixture temperature automatically, protecting the LED's lifetime and therefore your investment.

The auxiliary output provides a power source for sensors and/or cooling devices and eliminates the need for an additional power supply. Unequaled flexibility and performance along with Class P approval and Title 24 compliance makes the AFLEX driver the perfect choice for any commercial lighting fixture application.

- CLO (Constant Lumen Output)
- 90% Efficiency – Highest in the Industry
- Auxiliary Power Output
- Wide Operating Window
- 100 to 1,400mA – Compact 3-57 VDC
- 100 to 1,650mA – Linear 3-57 VDC
- 100 to 2,000mA – Linear 3-50 VDC



5 YEAR WARRANTY



CLASS 2



CLASS P

NOM

COMPACT



Installation

Terminal Blocks with Side Feed or Dual (Side and Back) Feed Options

Power Range

Up to 60W

Output Current

100 - 1400mA (1mA Step Programmable)



Terminal block with Side Feed or Dual Feed options

Wireless Programmable Features

Program power up to 60W

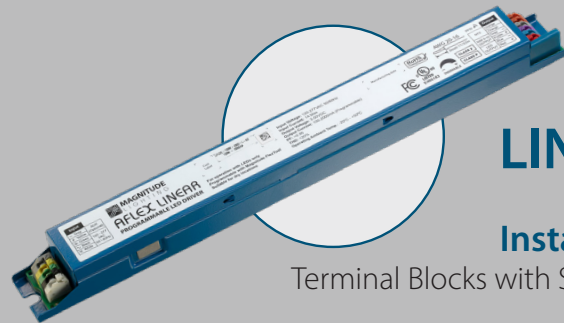
Output current (1mA step programmable)

Dimming curve (Linear / Logarithmic)

Dim-to-off (On / Off)

NTC settings

Aux Control 12V or Off



LINEAR

Installation

Terminal Blocks with Side Feed

Power Range

Up to 100W

Output Current

100 - 2000mA (1mA Step Programmable)

Terminal block with Side Feed



Wireless Programmable Features

Program power up to 100W

Output current (1mA step programmable)

Dimming curve (Linear / Logarithmic)

Dim-to-off (On / Off)

NTC settings

Aux Control 12V, 24V, or Off



AFLEX COMPACT

ORDERING GUIDE

Part Number Example: AFLEX-60W-1400-S-L-A



TYPE	MAX POWER	OUTPUT CURRENT	CASE STYLE	DIMMING CURVE	AUX POWER (OPTION)
AFLEX Compact	Up to 60W 30 to 60W — Programmable	1400 — 1400mA (Std)	S — Side Feed (Std)	L — Linear Curve (Std)	A — 12V PS (Std)



Pre-Programmed per Chosen Specification

30W — 30W
40W — 40W
50W — 50W
60W¹ — 60W

¹ = Default Settings (Std) = Standard

1400¹ — 1400mA (3-57VDC)

S¹ — Side Feed
D — Dual Feed

G — Logarithmic
L¹ — Linear

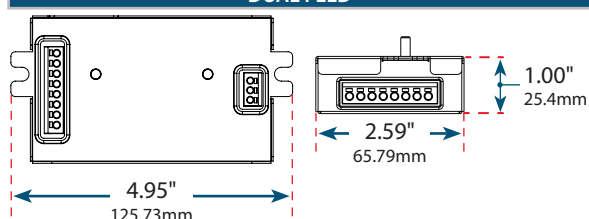
A¹ — 12V PS

DRIVER DIMENSIONS

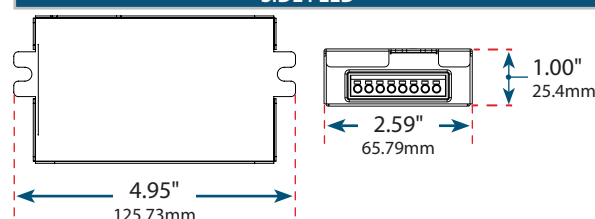
LENGTH	4.95" (125.73mm)
WIDTH	2.59" (65.79mm)
HEIGHT	1.00" (25.4mm)



DUAL FEED



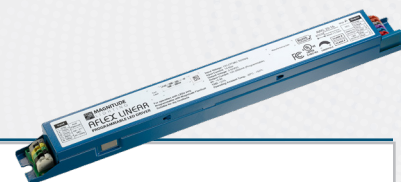
SIDE FEED



AFLEX LINEAR

ORDERING GUIDE

Part Number Example: AFLEX-100W-1650-L-L-E



TYPE	MAX POWER	OUTPUT CURRENT	CASE STYLE	DIMMING CURVE	AUX POWER (OPTION)
AFLEX Linear	Up to 100W 30 to 100W — Programmable	1650 — 1650mA (Std)	Linear Enclosure Only	L — Linear (Std)	12V PS and 57V Output (Std)



Pre-Programmed per Chosen Specification

30W — 30W
40W — 40W
50W — 50W
60W — 60W
75W — 75W
100W¹ — 100W

¹ = Default Settings (Std) = Standard

1650¹ — 1650mA (3-57VDC)
2000 — 2000mA (3-50VDC)

L¹ — Linear Enclosure

G — Logarithmic
L¹ — Linear

E¹ — 12V PS and 57V Output
F — 24V PS and 57V Output
B — 12V PS and 50V Output
C — 24V PS and 50V Output

DRIVER DIMENSIONS

LENGTH	12.00" (304.8mm)
WIDTH	1.20" (30.48mm)
HEIGHT	1.00" (25.4mm)



14711 Bentley Circle, Tustin, CA 92780
Phone: (714) 312-5080 | Fax: (714) 312-5070

magnitudeinc.com
info@magnitudeinc.com

Copyright © 2021 Magnitude Lighting, Inc. ♦ REV002