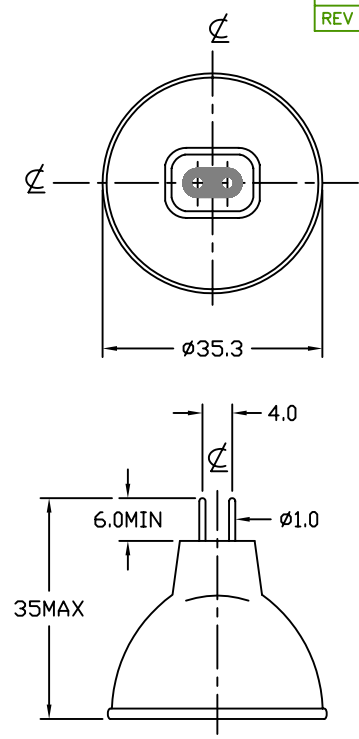
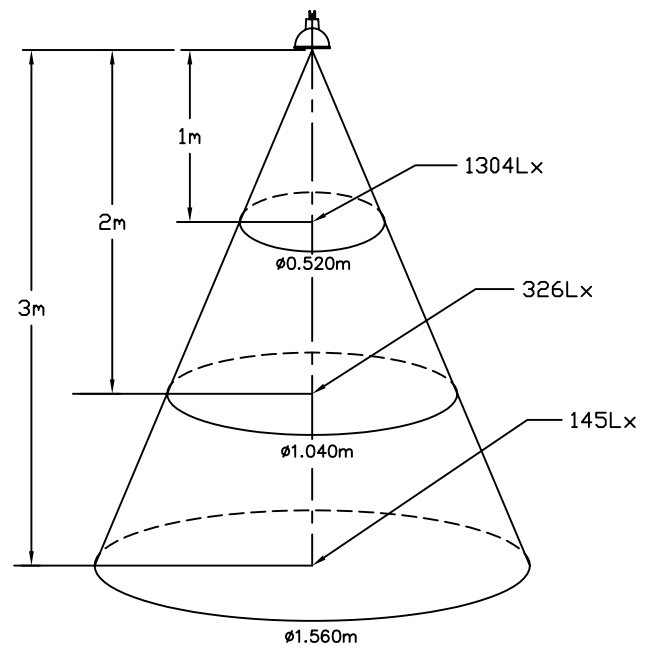


REVISIONS			
REV	DESCRIPTION	DATE	APPROVED



- NOTES:
1. ALL DIMENSIONS ARE IN MM.
  2. SEAL TEMP: SHOULD BE MAINTAINED BELOW 350°C
  3. THE DIMENSIONS AND SPECIFICATIONS OF PRODUCT LISTED IN THIS SHEET ARE SUBJECT TO CHANGE WITHOUT NOTICE FOR IMPROVEMENT.

CHARACTERISTICS	
VOLTAGE	12 V
WATTAGE	35 W
COLOR TEMP.	2950 K
MAX CP	1300 cd
BASE TYPE	GZ4
AVERAGE LIFE	2000 HRS
BEAM ANGLE	30°
BURN POSITION	ANY

ITEM	QTY	DESCRIPTION	CODE IDENT	PART NUMBER	REMARKS
<b>LIST OF MATERIALS</b>					
UNLESS OTHERWISE SPECIFIED DIMENSIONS ARE IN INCHES		CONTRACT NO.		<b>USHIO AMERICA, INC.</b> 10550 Camden Dr. Cypress, CA 90630	
DECIMALS .X ± -		APPROVALS			
.XX ± -		DATE		TITLE	
.XXX ± -		DRAWN R.AMPARO 08/18/99			
ANGLES ± -		CHKD D.GILCZYNSKI 08/18/99		FTH JDR/M12V-35W/G/NFL	
DRILLED HOLES PER AND 10387 REMOVE BURRS AND SHARP EDGES ALL DIMENSIONS AFTER PLATING		ENGR			
MATERIAL		MFG		SIZE	
COMPOSITE		QUAL		CODE IDENT NO.	
FINISH		DSGN ACTVY		B FTH	
NEXT ASSY		GOV'T ACTVY		DWG NO.	
USED ON		SCALE		1000627	
APPLICATION		NONE		WEIGHT	
				SHEET 1 OF 1	