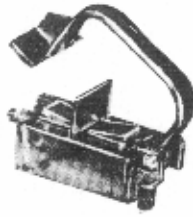
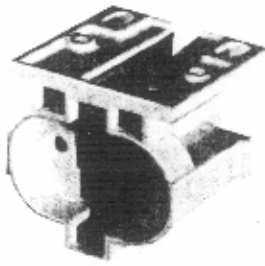


H. H. FLUORESCENT PARTS, INC.

1000 SCHENK AVENUE, P.O. BOX 99, ORFELTENHAM, PA 19072 • (215) 379-2750 • FAX (215) 379-2750



Lampholder 1301 Support 1300

for lamps with cap G 23



Fixing for the lampholder:

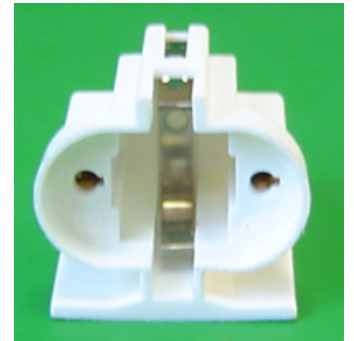
At the bottom with screws M 4 or tapping screws B 2.9 x 9.5 DIN 7971.
At the back with tapping screws B 2.9 x 9.5 DIN 7971.

Fixing of the support:

Screwless by moulded clips, suitable for wall thicknesses 0.6 ... 1.0 mm.
Type 1300-02: Screwless by moulded clips, suitable for wall thicknesses 1.6 ... 2.0 mm.

Advantages by using lamp support 1300:

Optimal fit lamp and luminaire housing are always at the same distance.
A swivelling bracket protects the lamp.
Crystal-clear versions avoid the formation of shadow.



type	art.-No.	packing unit	weight	colour
lampholder 1301	130101	250	10 g	white
support 1300	130001	250	3 g	crystal-clear
support 1300-02	130002	250	3 g	crystal-clear

