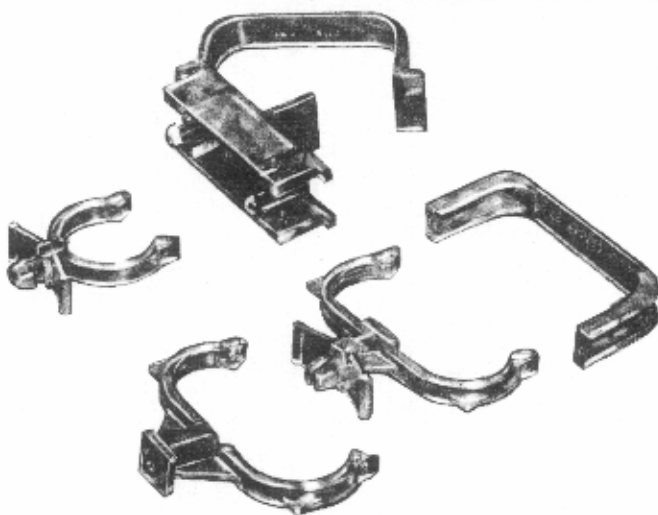


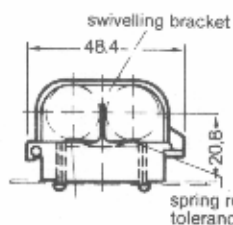
H. H. FLUORESCENT PARTS, INC.



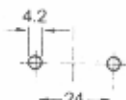
support

1320

for lamps with cap 2 G 11



perforation in the luminaire

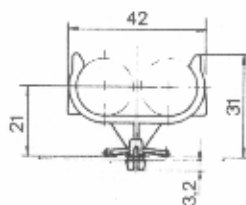


Screwless fixing by moulded clips.
Lamp protecting swivelling bracket.

for wallthicknesses **type**
0.6 - 1.0 support 1320

art.-No.	packing unit	weight	colour
132001	250	4 g	cristal clear

1320

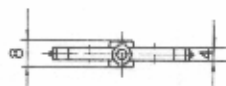
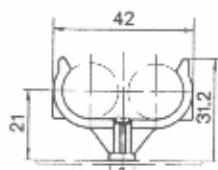


Screwless fixing by moulded clips.
Fixing hole \varnothing 5.5.

for wallthicknesses **type**
0.6 - 1.5 support 1320-11
1.5 - 2.4 support 1300-12

art.-No.	packing unit	weight	colour
132011	250	2 g	cristal clear
132012	250	2 g	cristal clear

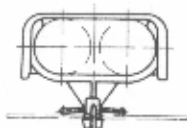
1320-11
1320-12



Fixing with tapping screws 2.9 x 16 or M 3 x 16 from above, or 3.9 x 9.5 from underneath.

type	art.-No.	packing unit	weight	colour
support 1320-13	132013	250	2 g	cristal clear

1320-13

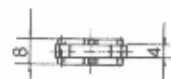
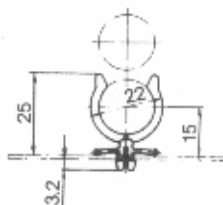


Safety bracket can be pushed over lamp and support for transport.
Bracket snaps into the support.

Usable for types 1320-11, 1320-12 and 1320-13.

type	art.-No.	packing unit	weight	colour
safety bracket 1320-10	132010	250	1 g	cristal clear

1320-10



Screwless fixing by moulded clips.
Lamp protecting swivelling bracket.

for wallthicknesses **type**
0.6 - 1.5 support 1320-21
1.5 - 2.4 support 1320-22

art.-No.	packing unit	weight	colour
132021	250	2 g	cristal clear
132022	250	2 g	cristal clear

1320-21
1320-22