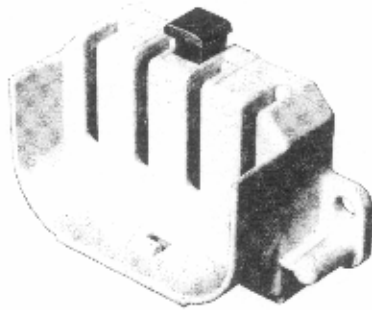


H. H. FLUORESCENT PARTS, INC.

1000 SECOND AVENUE, P.O. BOX 65, CHELSEA, MASSACHUSETTS 02156 TEL: (617) 552-2500 FAX: (617) 552-2550



lampholder

1329

for lamps with cap 2 G 11



Particularly flat, screw-on type lampholder for compact fluorescent lamps. Parallel slots for lamp insertion and an unbolting button allow easy change of lamp.

Fixing at the back with screws M 4 or tapping screws 2.9 x 9.5 DIN 7971.

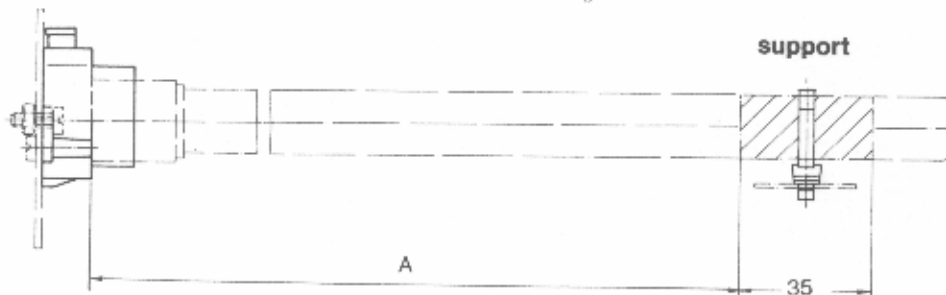
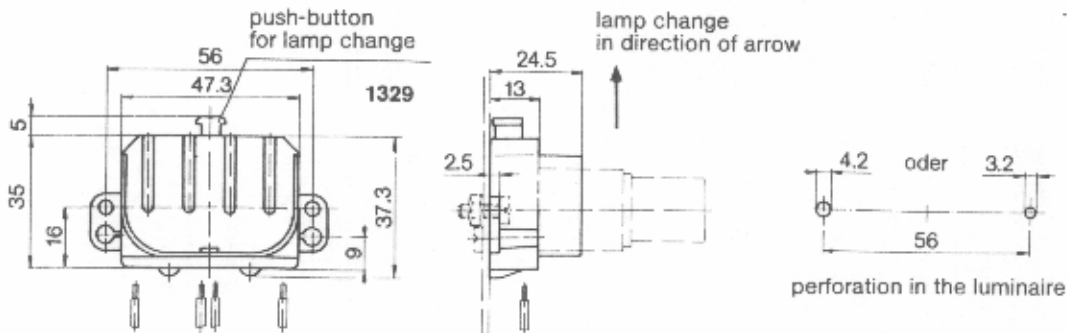
Twin pin terminal for continuous wiring.

A secure sit of the lamp necessitates the use of a support (see special page).

We recommend to chose the distance of the support according to the table given below.

The measure "A" is chosen in a way that, if the permissible lamp power to the ballast is not reached, the lamp cannot be snapped into the support.

type	art.-no.	packing unit	weight	colour
lampholder 1329	132901	250	24 g	white



lamp	measure "A"
18 W	140
24 W	235
36 W	330