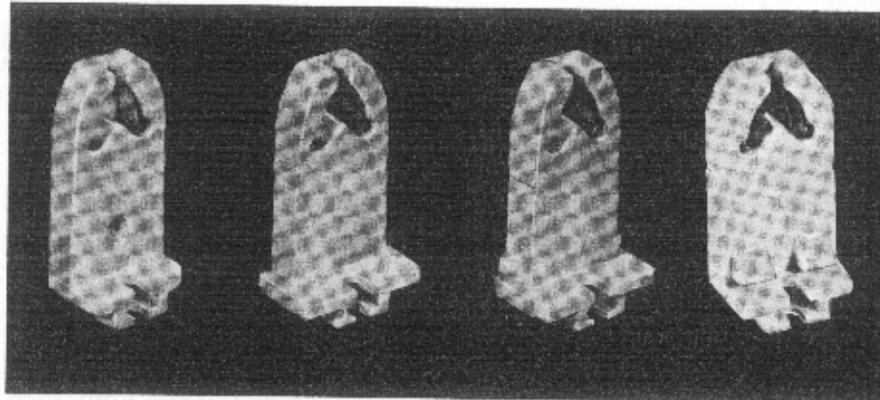


H. H. FLUORESCENT PARTS, INC.

MEDIUM BI-PIN LAMP HOLDERS "PRESSURE LOCK" 660W-600V

Listed by
Underwriter's Laboratories, Inc.
File #E20650
C.S.A. Approved
File #LR25026



526

526-R

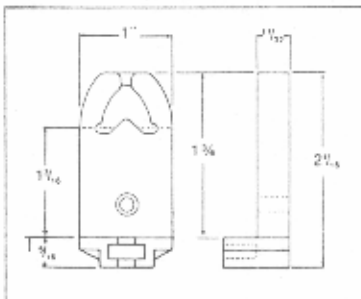
526-S

526-F

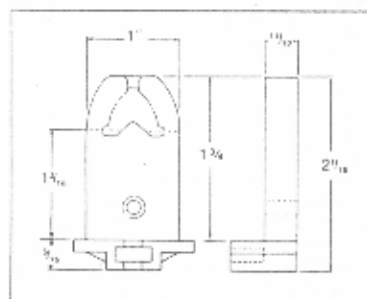
CAT. NO.	APPLICATION	HARDWARE	STD. PKG.	WT. LBS.
526	For Flush Mtd.	6-32 x 5/16" Screw — 9/32 Pal Nut	1000 PC	25
526-1	Center Hole Tapped	8-32 x 1/4" Screw	1000 PC	25
526-2	For Flush Mtd.	6-32 x 5/16" Screw — 9/32 Pal Nut Inserted	1000 PC	25
526-F	Front Side on Mtd.	No Hardware	1000 PC	28
526-R	For Flush Mtd.	6-32 x 5/16" Screw — 9/32 Pal Nut	1000 PC	28
526-R-2	For Flush Mtd.	6-32 x 5/16" Screw — 9/32 Pal Nut Inserted	1000 PC	28
526-S	For Slide-On Mtd.	No Hardware	1000 PC	28

JUMPER SETS AVAILABLE

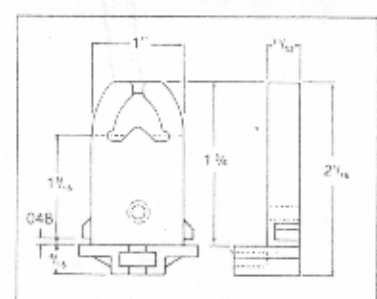
626 - CIRCUIT INTERRUPTING TYPE



526

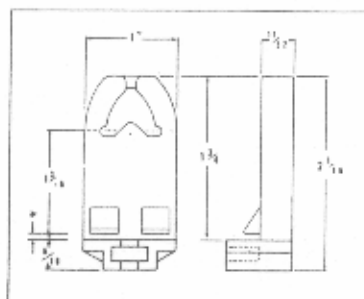


526-R

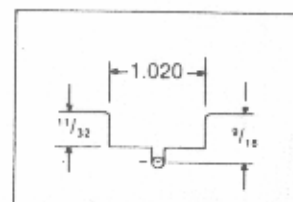


526-S

DIMENSION SKETCHES



526-F



*Slot size for either 18 or 20 gauge steel. Please specify.