

# HP 1200/80

## 1200W 80V G22 Tungsten Halogen Lamp



The HP 1200/80 lamp is a high performance tungsten halogen lamp in a G22 base. It is a redesign of the HWLV 1200W/80V lamp (Product Number 54799) resulting in less heat at the press seal area. With a larger T8 envelope and an average life of 250 hours, this stage and studio lamp boasts an impressive output of 37,500 lumens.

### Key Features & Benefits

- Improved G22 base design allows for greater cooling at the press seal area, lowering temperatures there by over 100°C compared to the standard G22 base
- The envelope has been increased from T7 to T8 to reduce bulb wall temperature
- New dimpled quartz design at the press seal gives greater surface area for enhanced cooling, and provides greater mechanical stability due to increased thickness
- OSRAM G22 lampholder is available:
  - Maximum Amperage: 20 Amps
  - Maximum Voltage: 1000 V
  - Maximum Operating Temperature: 350° C
  - Contact Material: Nickel Plated Brass
  - UL Recognized



OSRAM G22 Lampholder

### Product Offering

Product Number	Lamp Description	Watts	Volts	Bulb	Base	Lumens	Avg. Rated Life (hrs)	Color Temp (°K)
54855	HP 1200/80	1200	80	T8	G22	37,500	250	3,200

### Application Information

#### Applications

- Follow Spots
- Intelligent Fixtures
- Stage, Studio, Television
- Club Lighting

#### Warning

This lamp emits ultraviolet (UV) radiation and operates at high pressure. Before use, read the complete warning accompanying the product.

#### Disposal

When disposing of spent lamps, always consult federal, state, local and provincial hazardous waste disposal rules and regulations to ensure proper disposal.

## Ordering Information

Lamp Description	Product Number	Standard Case Quantity
HP 1200/80	54855	12/case

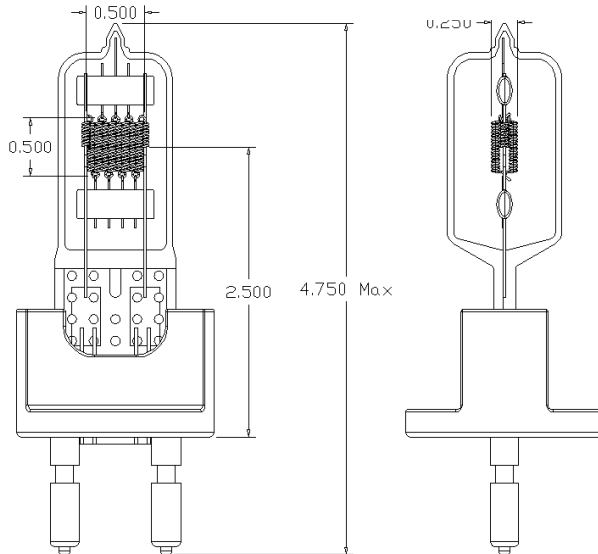
## Ordering Information

Lampholder Description	Product Number	Standard Case Quantity
G22	69371	42/case

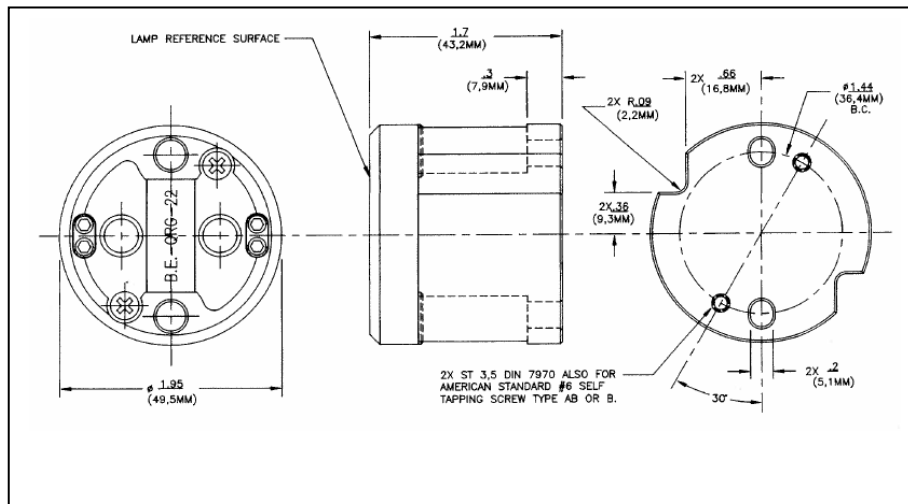
## Ordering Guide

HP	1200 /	80
High Performance Tungsten Halogen Lamp	Wattage = 1200	Volts= 80

HP 1200/80 Line Drawing  
Measurements in inches



G22 Line Drawing  
Measurements in inches and mm



**OSRAM SYLVANIA**  
National Customer  
Service and Sales Center  
18725 N. Union Street  
Westfield, IN 46074 USA

**Industrial Commercial**  
Phone: 1-800-255-5042  
Fax: 1-800-255-5043

**National Accounts**  
Phone: 1-800-562-4671  
Fax: 1-800-562-4674

**OEM/Special Markets**  
Phone: 1-800-762-7191  
Fax: 1-800-762-7192

**Display/Optic**  
Phone: 1-888-677-2627  
Fax: 1-800-762-7192

**In Canada**  
**OSRAM SYLVANIA LTD**  
Headquarters  
2001 Drew Road  
Mississauga, ON L5S 1S4

**Industrial Commercial**  
Phone: 1-800-263-2852  
Fax: 1-800-667-6772

**Special Markets**  
Phone: 1-800-265-2852  
Fax: 1-800-667-6772

Visit our website: [www.sylvania.com](http://www.sylvania.com)