

# Little Inch

1" Task Light  
 T5/T5HO Fluorescent  
 HP100/200 Series

Project	Type
Project Location	
Catalog #	

## Description

The Little Inch is a superior quality miniature fluorescent for general use undercabinet lighting in residential, commercial, and industrial applications.

### Additional Features:

- Class "P" high performance ballast instantly starts lamps without flicker and operates cooler/more quietly/more efficiently than conventional pre-heat systems.
- No external replaceable starter to malfunction or wear out.
- Post fabrication painting eliminates raw edges which can rust or cause injury.
- Limited lifetime warranty.
- Extremely thin 1" deep profile.
- Available in various lengths with standard pre-heat, premium, and high output lamps.
- Quick installation and easy maintenance with hinged wireway.
- Flush ends allow row mounting for continuous illumination.
- Choose translucent lens for diffuse illumination or opaque front task lens for 30% more footcandles without direct edge-glare.



## Specifications

**Construction** 20 gauge cold rolled steel housing with corners neatly formed and knockouts flattened. All exposed edges deburred.

**Electrical/Lamps** For standard T5 lamps, electronic normal power factor ballast, 120V only. 3000K warm white lamps included. Optional 4100K cool white (41K) lamp available. 7,500 hour average life.

For premium T5 lamps, high power factor electronic rapid start ballast. 3000K tri-phosphor lamps included. 3500K (35K) or 4100K (41K) tri-phosphor lamps available in place of standard 3000K. 20,000 hour average life.

For T5 high output lamps, high power factor electronic rapid start ballast. 3000K tri-phosphor lamps included. 3500K (35K) or 4100K (41K) tri-phosphor lamps available in place of standard 3000K. 20,000 hour average life.

**Diffuser** Translucent opal with minimum 75% transmission or optical one piece co-extruded with clear linear prism bottom and opaque front with minimum 85% transmission. DR acrylic material able to withstand full twisting without breakage, and warranted to remain pliable and light stable.

**Finish** Baked on polyester resin powder-coat finish, applied after fabrication over a bonderizing iron phosphate coating.

**Installation Features** All components are installed on a hinged wireway with concealed fasteners for simplified mouting/wiring. Rear access plates and quick connects further ease installation (center rear knockout replaces rear access plate on HP108).

**Labels** cULus Listed for damp locations.

**Warranty** All luminaire components (except for the lamps and ballasts) are warranted against defects during the life of the original installation.

## Ordering Information

Sample Catalog No: HP121-277-WHG		Voltage <sup>1</sup>		Dimming		Finish		Lamp Color Temperature		Options		
NOM. LENGTH	Model Number	120	277	blank	non-dimming	WHG	White	blank	3000K	COW <sup>2</sup>	White grounded convenience outlet	
1'	HP108 <sup>3</sup>	(1) F8T5 (Preheat), miniature bipin base	277	277V	DIM1	0-10V dimming	BLK	Black	35K <sup>2</sup>	3500K	CS3W <sup>2</sup>	6' white U.L. label 3-wire cordset
	HP113 <sup>3</sup>	(1) F13T5 (Preheat), miniature bipin base			DIM2	Phase dimming			41K	4100K	OF	Opaque front task lens
	HP114	(1) F14T5, miniature bipin base									RSW	Factory installed rocker switch
2'	HP124	(1) F24T5HO, miniature bipin base									SBF	GMF slow-blow fuse and holder
	HP138 <sup>3</sup>	(1) F8T5 & (1) F13T5 (Preheat), miniature bipin base										
	HP121	(1) F21T5, miniature bipin base										
3'	HP139	(1) F39T5HO, miniature bipin base										
	HP213 <sup>3</sup>	(2) F13T5 (Preheat), miniature bipin base										
	HP128	(1) F28T5, miniature bipin base										
4'	HP154	(1) F54T5HO, miniature bipin base										

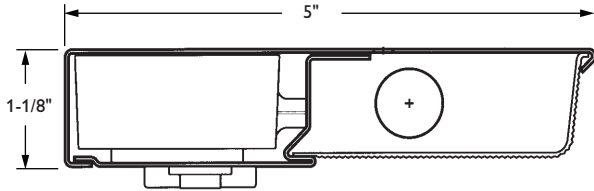
Notes:  
 1. 347V not available  
 2. CS3W & COW options available only for 120V.  
 3. 3500K not available with standard pre-heat configurations.

# Little Inch

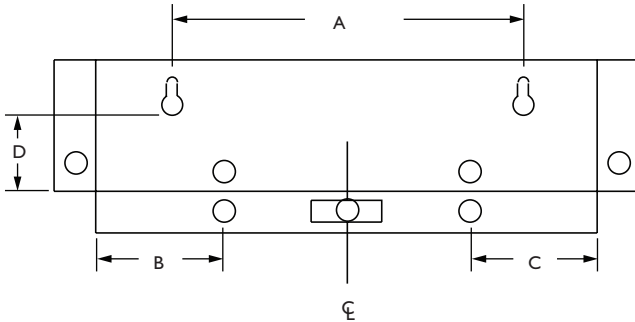
1" Task Light  
 T5/T5HO Fluorescent  
 HP100/200 Series

Project	Type
---------	------

## Dimensional Data



Knockouts and Mounting Holes (Flat Pattern)

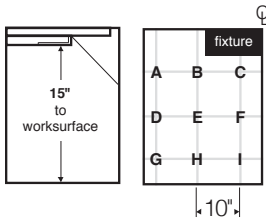


Knockouts and Mounting Holes					
Model	Unit Length	A	B	C	D
HP108*	12-5/16"	8-1/16"	–	–	3"
HP113	21-5/16"	17-1/16"	5"	5"	3"
HP116	24-1/2"	20-1/4"	5"	5"	3"
HP138	33-1/2"	29-1/4"	5"	5"	3"
HP213	42-1/2"	38-1/4"	5"	5"	3"
HP114/124	22-1/2"	18-5/16"	5"	5"	3"
HP121/139	34-3/8"	30-1/8"	5"	5"	3"
HP128/154	46-1/4"	41-15/16"	5"	5"	3"

\*HP108 provided with rear center knockout in place of access plate

## Photometrics

### PHOTOMETRIC DATA



Maintain Footcandles on Worksurface

Cat No.	A	B	C	D	E	F	G	H	I
<b>Standard T5 Luminaries</b>									
HP108	1.0	4.9	25.1	0.8	2.5	6.4	0.5	1.1	1.7
HP113	2.1	10.1	52.1	1.7	5.3	13.3	1.1	2.2	3.6
HP116	2.0	9.7	50.0	1.6	5.1	12.7	1.0	2.1	3.5
HP138	3.2	15.0	77.0	2.5	7.8	19.7	1.6	3.2	5.4
HP213	4.3	20.2	104.0	3.4	10.6	26.5	2.1	4.4	7.2
<b>Premium T5 Luminaries</b>									
HP114	4.0	19.2	97.0	3.1	9.5	24.3	1.9	3.9	6.4
HP121	6.4	30.4	152.0	5.0	15.3	38.6	3.0	6.3	10.2
HP128	9.0	42.3	213.0	7.0	21.3	53.1	4.2	8.7	14.1
<b>T5 High Output Luminaries</b>									
HP124	6.0	28.4	143.0	4.7	14.1	36.0	2.7	5.8	9.4
HP139	10.6	50.7	254.0	8.4	25.5	64.3	5.0	10.5	17.1
HP154	15.5	72.9	368.0	12.0	36.8	91.7	7.2	14.9	24.3

Some luminaires use fluorescent or high intensity discharge (HID) lamps that contain small amounts of mercury. Such lamps are labeled "Contains Mercury" and/or with the symbol "Hg". Lamps that contain mercury must be disposed of in accordance with local requirements. Information regarding lamp recycling and disposal can be found at [www.lamprecycle.org](http://www.lamprecycle.org)



© 2014 Koninklijke Philips N.V. All rights reserved.  
 Specifications are subject to change without notice.  
[www.philips.com/luminaires](http://www.philips.com/luminaires)

Philips Lighting  
 North America Corporation  
 200 Franklin Square Drive  
 Somerset, NJ 08873  
 Tel. 855-486-2216

Imported by: Philips Lighting,  
 A division of Philips Electronics Ltd.  
 281 Hillmount Rd,  
 Markham, ON Canada L6C 2S3  
 Tel. 800-668-9008