



SmartMate

SMARTMATE ICF2S18H1LDK

Offering maximum versatility, the Philips Advance family of SmartMate ballasts for 4-pin compact fluorescent lamps drive a broad range of quad and triple-tube, circline, 2D, and long twin-tube lamps. SmartMate ballasts' energy efficient design, compact and lightweight housing, and user-friendly features make these ballasts an ideal choice for fixture manufacturers, retrofitters, and MRO replacement.

Product data

General Information	
Lamp Type	CFQ18W/G24Q
Number Of Lamps	1/2 piece/unit
Ballast Type	Electronic Fluorescent
Base Model	ICF2S18H1LD
Suitable For Outdoor Use	Yes
Automatic Restart	Yes
Operating and Electrical	
Input Voltage	120 to 277 V
Input Frequency	50 to 60 Hz
Total Harmonic Distortion USA	10 %
Power (Rated) (Nom)	18 W
Ignition Method	Programmed Start
Crestfactor (Nom)	1.5
Ignition Time (Nom)	1.5 s
Ballast Factor (Nom)	0.95
Power Factor (Nom)	0.98
Input Current (Max)	0.30 A
Input Current (Min)	0.13 A
Input Power (Nom)	35-35 W

Rated Lamp Power	18W W
Wiring	
Color Input Terminals	Black and White
Color Output Terminals	RED, YEL & BLU
Wire Striplength	0.375 mm
Lamp Connection	Series
Wire Length By Color	No wires
Wire Gauge (Nom)	18AWG mm
Wire Type	Solid
Remote Wiring Configuration Allowed	Yes
Tandem Wiring Configuration Allowed	Yes
Through Wiring Configuration Allowed	Yes
Max Ballast-Lamp Distance Remote Wiring	1-L = 15' / 2-L = 6'
Max Ballast-Lamp Distance Tandem Wiring	2-L: Red = 6'
Max Ballast-Lamp Distance Through Wiring	2-L: Red = 6'
Connector Type	Poke-In
Temperature	
T-Case Maximum (Nom)	75 °C

Mechanical and Housing

Housing Material	Metal/Plastic
Housing	H1
Housing Dimensions	4.98" x 2.4" x 0.98"

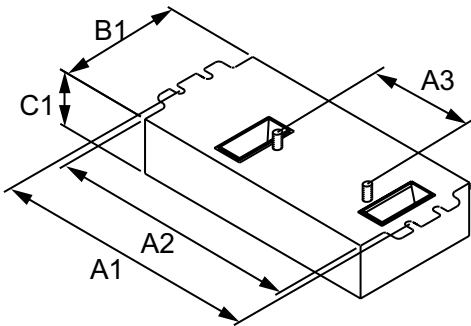
Approval and Application

EMC Immunity Standard	FCC Non-Consumer
Approval Marks	CSA certificate UL certificate CEC Listing RoHS Compliant
Hum And Noise Level	A
UL Recognized	No

Product Data

Order product name	SMARTMATE ICF2S18H1LDK
EAN/UPC - Product	781087117767
Order code	913700500821
Numerator - Quantity Per Pack	1
Numerator - Packs per outer box	12
Material Nr. (12NC)	913700500821
Net Weight (Piece)	250.000 g

Dimensional drawing



Product	A1	A2	A3	B1	C1
SMARTMATE ICF2S18H1LDK	4.60 in	4.20 in	2.00 in	3.00 in	1.29 in

ELE BAL (2) 18W CFL (4-PIN) 120-277V KIT

