

KT-FLED140PS-R2X-UNV-8CSB-VDIM

HIGH POWER FLOODLIGHT

DESCRIPTION

High Power Floodlight | Power Select | Color Select |
120-277V | 80 CRI | Bronze Housing

APPLICATION

Ground, pole, or building mount applications (parking lots, auto dealerships, building facades, signs, recreational venues, general area lighting)

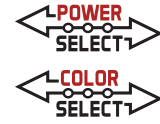


PRODUCT FEATURES

- High power floodlight with innovative design based on established floodlight principles
- Suitable for ground, pole, or building mount applications
- Keystone Power Select technology (140/100W)
- Keystone Color Select technology (3000/4000/5000K)
- Heavy-duty slipfitter and trunnion mount options included
- 3-pin twist lock photocell and shorting cap included with NEMA/ANSI C136.10 3-pin twist lock receptacle
- Precision-crafted optics lens. NEMA 7H x 6V, 6H x 6V, and 5H x 5V available. See below chart for details.
- Die cast aluminum housing, with optional glare shield accessory (sold separately)
- Keystone 0-10V dimming driver with 12V AUX power tap and 6kV surge protection
- Ambient operating temperature: -40°C/-40°F - 50°C/122°F
- UL and DLC 5.1 listed, IP65 rated
- Power factor: >.95
- THD: <20%
- LED chip lifetime: L70 >100,000 hrs @ 25°C/77°F ambient fixture temperature
- Meets FCC Part 15, Part B, Class A standards for conducted and radiated emissions

PRODUCT SPECIFICATIONS

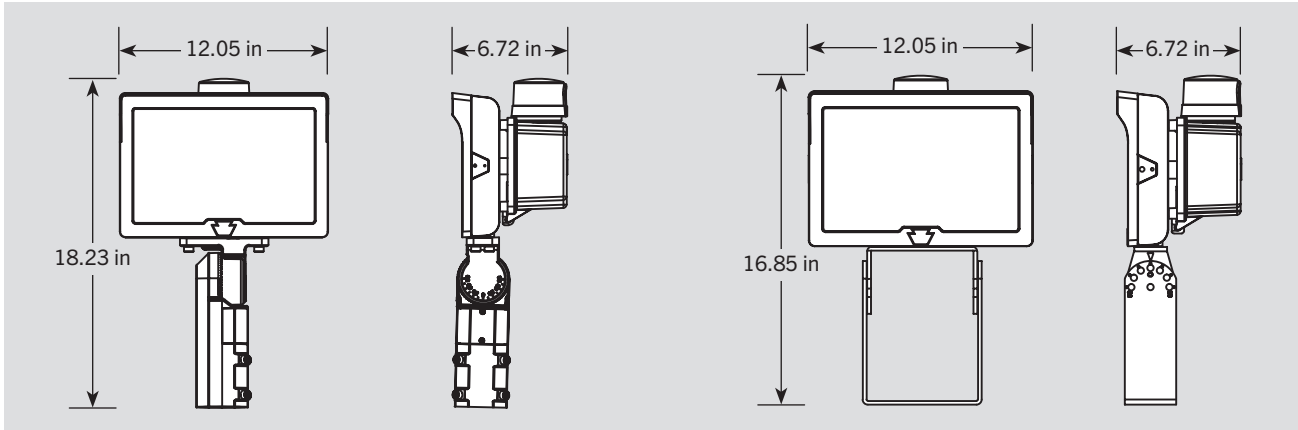
Catalog Number	Selectable Wattage	Selectable CCT	Lumen Output	Efficacy	Input Voltage	CRI	Dimming	Mounting	Dist Pattern	Photocell	Rated Life	Legacy Equivalent
KT-FLED140PS-R2B-UNV-8CSB-VDIM	140W	3000K	17500	125 lm/W	120 - 277V	>80	0-10V	Universal: 2 3/8" Slip Fitter or Trunnion	7H x 6V	Included	50,000 Hours	400W MH
		4000K	20300	145 lm/W								
KT-FLED140PS-R2C-UNV-8CSB-VDIM	100W	5000K	18900	135 lm/W								
		3000K	13500	135 lm/W								
KT-FLED140PS-R2D-UNV-8CSB-VDIM		4000K	15500	155 lm/W								
		5000K	14500	145 lm/W								



KT-FLED140PS-R2X-UNV-8CSB-VDIM

HIGH POWER FLOODLIGHT

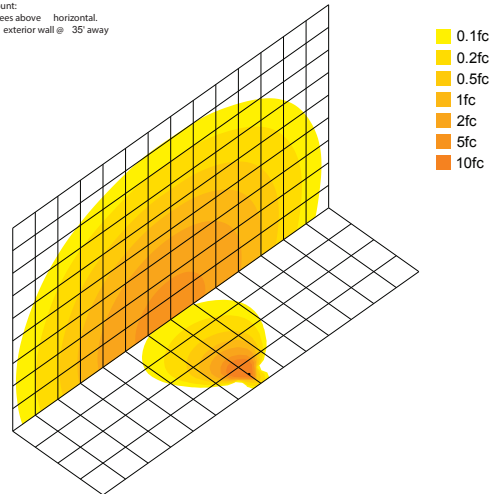
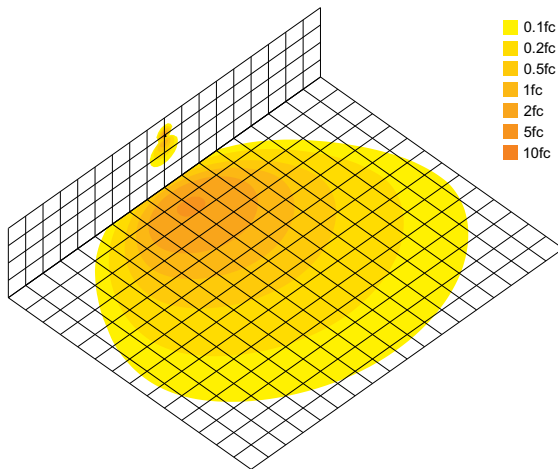
PHYSICAL SPECIFICATIONS



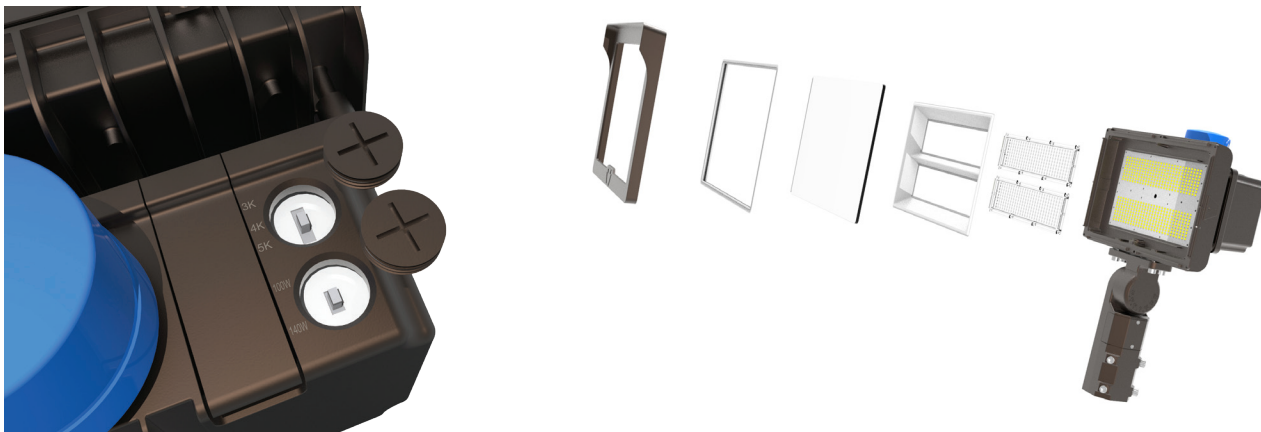
PHOTOMETRICS

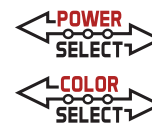
140W 5000K Building Mount: Building exterior mounted at 30°, 30 degrees below horizon

140W 5000K Ground Mount:
6' above ground, 10 degrees above horizontal,
Shining towards building exterior wall @ 35' away



EXPLODED VIEW





KT-FLED140PS-R2X-UNV-8CSB-VDIM

HIGH POWER FLOODLIGHT

ORDERING INFORMATION

Catalog Number	Easy Code	UPC
KT-FLED140PS-R2B-UNV-8CSB-VDIM	AME-92	843654138626
KT-FLED140PS-R2C-UNV-8CSB-VDIM	TBD	TBD
KT-FLED140PS-R2D-UNV-8CSB-VDIM	TBD	TBD

ACCESSORIES (SOLD SEPARATELY)

Catalog Number	Description
KT-FLED-GS-R2-1-KIT	Glare shield for 140W Fixture

CATALOG NUMBER BREAKDOWN

KT-FLED140PS-R2X-UNV-8CSB-VDIM

1 2 3 4 5 6 7 8 9 10 11 12

- 1 Keystone Technologies
- 2 Floodlight LED
- 3 Max Wattage
- 4 Power Select
- 5 Shape
- 6 Style
- 7 Distribution
- 8 Mounting
- 9 80 CRI
- 10 Color Select
- 11 Color Select Designation
- 12 0-10V Dimming

5 Shape

R	Rectangular
---	-------------

6 Style

2	Series 2
---	----------

7 Distribution

B	NEMA 7H x 6V Beam Spread
C	NEMA 6H x 6V Beam Spread
D	NEMA 5H x 5V Beam Spread

8 Mounting

UNV	Universal
-----	-----------

11 Color Select Designation

B	3000/4000/5000K
---	-----------------