

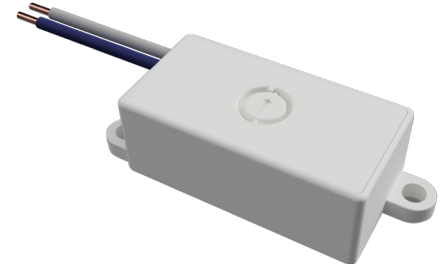


# KTC-VDIM-ADJ

## 0-10V FIXTURE POWER TRIMMER

### DESCRIPTION

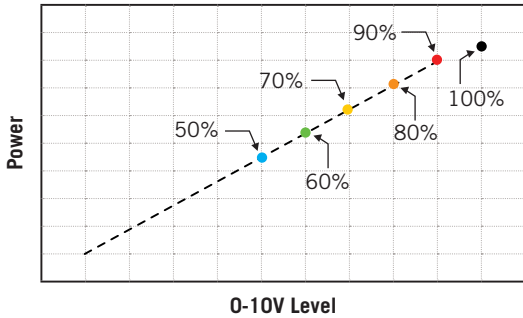
Power select rotary switch for 0-10V dimmable loads. Designed to reduce luminaire output when specs are higher than desired. Operates as a simple 0-10V dimmer with preset levels. A normal dimmer used simultaneously will begin dimming once it is adjusted below the trimmer setting (E.g. when the trimmer is set to 70%, the dimmer will be unresponsive from high-end down to the normal 70% position. Below this trim level, the dimmer will function normally).



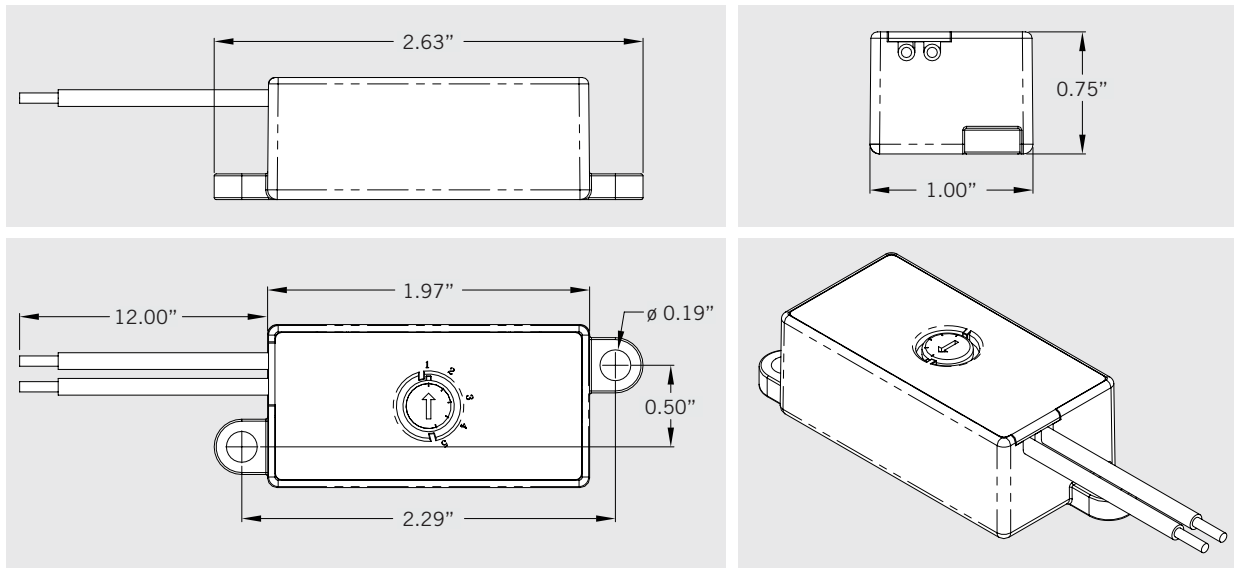
### PRODUCT FEATURES

- 5 settings in 10% power decrements (90% and lower)
- 0-10V wire connection to luminaires
- Dimming performance for fixture will change when installed, dependent on % setting. See below “Functional Example” chart for graphical explanation.
- Adjust settings with a flathead screwdriver

### FUNCTIONAL EXAMPLE



### PHYSICAL SPECIFICATIONS



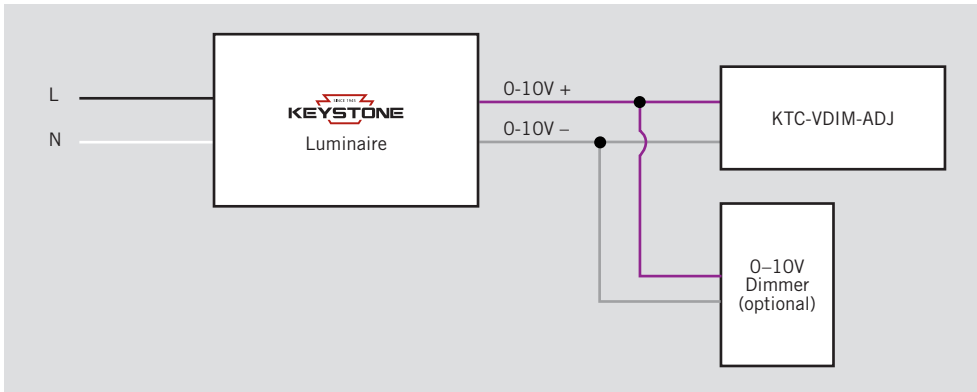
### WIRE/CABLE SPECIFICATIONS

Function	Color	Gauge	Type	Length
0-10V +	Purple	22AWG	Solid	12.00"
0-10V -	Gray			

# KTC-VDIM-ADJ

## 0-10V FIXTURE POWER TRIMMER

### WIRING DIAGRAM



\* Because the KTC-VDIM-ADJ operates by lowering the 0-10V level, a dimmer on the same circuit will usually be unresponsive until it dims below the set point of the trimmer. This high-end dead travel can typically be reduced by lowering the high-end trim setting on the dimmer.

### ORDERING INFORMATION

ORDER CODE	PACK QUANTITY	EASY CODE	UPC
KTC-VDIM-ADJ	1	XOU-06	843654132587

### CATALOG NUMBER BREAKDOWN

# KTC-VDIM-ADJ

1

2

3

- 1 Keystone Technologies Controller
- 2 0-10V Dimming
- 3 Adjustment