



# KTLD-150-HV-A4200-50-VDIM-LW12

## CONSTANT CURRENT LED DRIVER

### DESCRIPTION

LED Driver | 150W | 200-480V Input | 1900-4200mA Constant Current Output



RoHS  
Compliant



5 YEAR  
WARRANTY

**DRIVER TYPE:** Constant Current LED Driver

**MAX. OUTPUT POWER:** 150 W

**INPUT VOLTAGE:** 200-480V

**OUTPUT VOLTAGE:** 30-50 Vdc

**OUTPUT CURRENT:** 1900-4200mA

**DIMMING:** 0-10V

**WARRANTY:** 5 Years

### ELECTRICAL SPECIFICATIONS

Input Voltage	200-480Vac
Input Frequency	50/60Hz
Input Current ( Typ.)	0.85 A @277-480 Vac , 100% load
No load Voltage	5Wmax
Inrush Current	60Amax. @ 347Vac, 25°C
Power factor ( Typ.)	PF>0.90 @ 277Vac, PF>0.90 @ 480Vac, 100% load
THD	THD<20% @ 277-480 Vac, 100% load
Current accuracy	± 5%
Efficiency	≥90% @ 277 Vac, ≥91% @ 480Vac
Output Voltage	Table 1
Ripple and Noise	1200mVp-p
Line Regulation	3%
Load Regulation	3%
Turn On Delay Time	Under normal conditions, the maximum delay time is 2 second
Potentiometer current output range	The total output power does not exceed 150W (actual output voltage * actual output current = power), otherwise, it can not be guaranteed.
Open circuit	When the LED disconnection the product is protected such as hiccup or when it is at the highest point of output voltage, the power supply shall be self-recovery when the fault condition is removed.
Short Circuit	The input power shall decrease when the output rail short, the power supply shall be self-recovery when the fault condition is removed.
Life Time	≥5Years H@347Vac, 100% load. See lifetime vs. Tc curve for the details
MTBF	≥ 200,000H@ 25°C,347Vac, 80% load. (MIL-HDBK-217F)

### ELECTRICAL SPECIFICATIONS

Catalog Number	Wattage	Output Voltage	Max Output Voltage	Output Current	Efficacy
KTLD-150-HV-A4200-50-VDIM-LW12	150	30-50V	63Vdc	1.9-4.2A	89% @ 200V 90% @ 480V



# KTLD-150-HV-A4200-50-VDIM-LW12

## CONSTANT CURRENT LED DRIVER

### ENVIRONMENTAL SPECIFICATIONS

<b>Operating Temperature</b>	-40°C - +60°C
<b>Operating Relative Humidity</b>	10% to 90% RH, non-condensing
<b>Storage Temperature</b>	-40°C to +85°C
<b>Storage Relative Humidity</b>	10% to 90%RH, non-condensing (Sea level to 2,000 m)
<b>Vibration</b>	10 to 500HZ Sweep at constant acceleration of 1.0G (depth: 3.5mm )for 1 Hour for each of the perpendicular axes X, Y, Z.
<b>Degrees of Protection</b>	IP65

### SAFETY AND EMC COMPLIANCE

<b>Dielectric Strength</b>	P-S:3750VAC/5mA/60S P-E:1500VAC/5mA/60S P-E:500VAC/5mA/60S
<b>Insulation Resistance</b>	I/P-O/P:>50M Ohms / 500VDC / 25°C / 70% RH
<b>Leakage Current</b>	The leakage current shall be less than 0.25mA for Class 2 at maximum input voltage
<b>Safety Standard</b>	UL:UL8750:CSA 250.13
<b>EMI</b>	FCC: PART 15B Subpart B; ANSI C63.4:2014
<b>EMS</b>	CE-EMC/RCM: EN61000-4-2,3,4,5,6,11, CCC:GB/T17626.2,3,4,5,6,11
<b>ESD</b>	Electrostatic discharge/immunity, Severity Level, Level 3 air discharge: ±8KV, Severity Level, Level 2 contact discharge: ±4KV performance criterion; B
<b>RF</b>	80-1000MHZ; Severity Level Level2/ 3V/M; Performance Criterion: A
<b>Group pulse</b>	1.0KV(Class B)
<b>Surge Immunity</b>	Severity Level, Level 2 Differential mode:6KV, Severity Level, Level 3 Common mode: 6KV, Performance criterion: B

### MECHANICAL SPECIFICATIONS

#### CASE DIMENSIONS

	<b>LENGTH</b>	8.50"
	<b>WIDTH</b>	2.68"
	<b>HEIGHT</b>	1.42"
	<b>CASE STYLE</b>	LW12

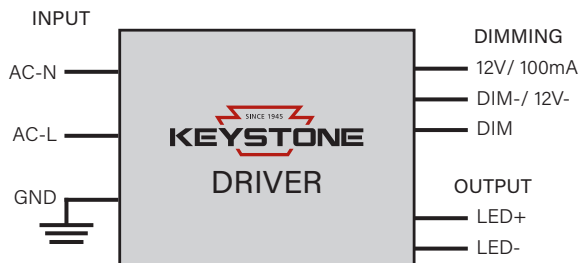
#### STANDARD LEAD LENGTHS\*

<b>WHITE</b>	18.00"
<b>BLACK</b>	18.00"
<b>RED</b>	18.00"
<b>BLUE</b>	18.00"
<b>PURPLE</b>	22.00"
<b>PINK</b>	22.00"

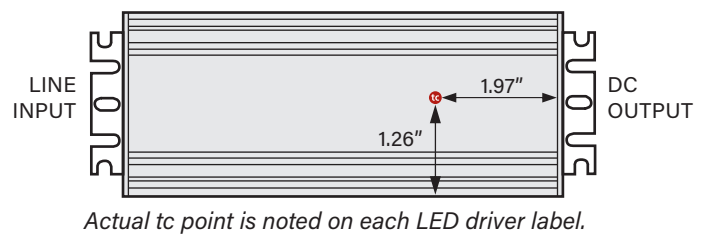
\*Consult Keystone for special lead length requirements.

**CASE MATERIAL: Metal**

### WIRING DIAGRAM



### HOT SPOT LOCATION

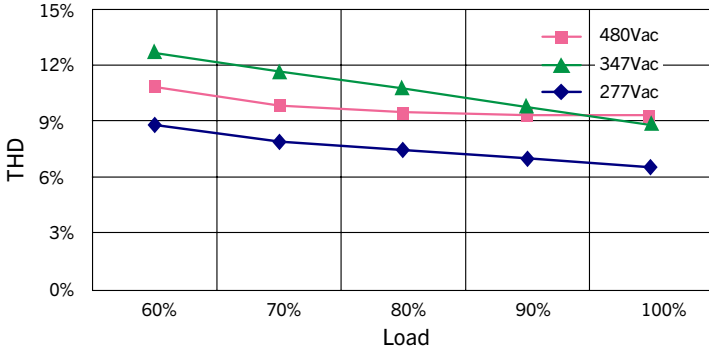




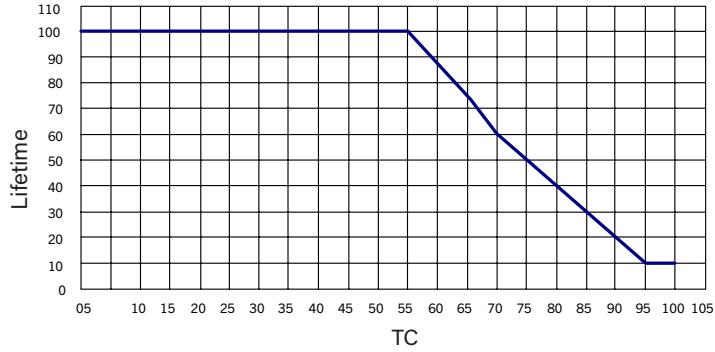
# KTLD-150-HV-A4200-50-VDIM-LW12

## CONSTANT CURRENT LED DRIVER

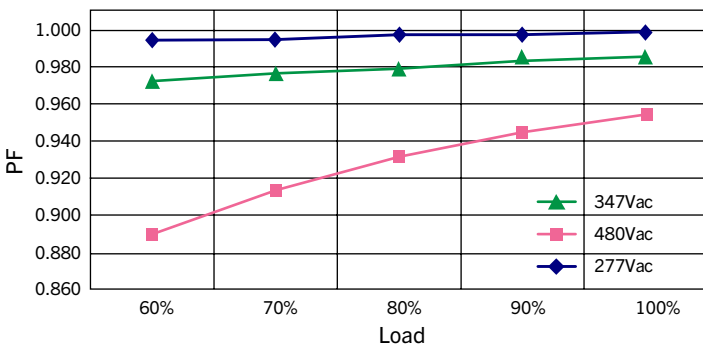
**THD VS. Load**



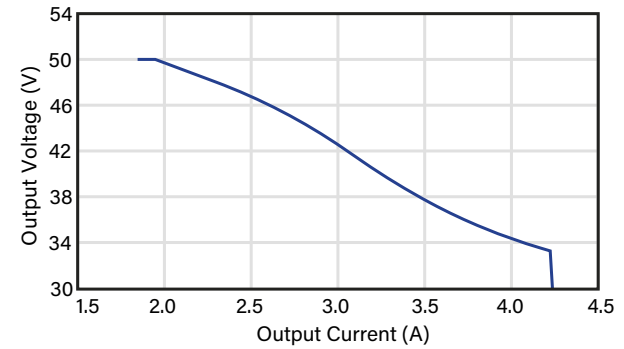
**Lifetime VS. TC**



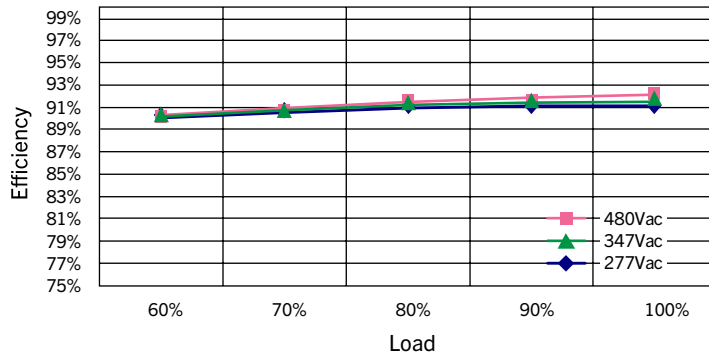
**Power Factor VS. Load**



**Power Curve**



**Efficiency VS. Load**





# KTLD-150-HV-A4200-50-VDIM-LW12

## CONSTANT CURRENT LED DRIVER

### ORDERING INFORMATION

ORDER CODE	PACK QTY.	UPC	EASY CODE
KTLD-150-HV-A4200-50-VDIM-LW12	50	TBD	TBD

### CATALOG NUMBER BREAKDOWN

# KTLD-150-HV-A4200-50-VDIM-LW12

1

2

3

4

5

6

7

8

- 1** Keystone Technologies LED Driver
- 2** Max. Output Wattage
- 3** High Voltage
- 4** Series
- 5** Max Amp.
- 6** Output Voltage
- 7** 0-10 Dimming
- 8** Case Style