

ELECTRONIC LED DRIVERS

LED Driver Type	Constant Current (Class 2)
Maximum Wattage	22 Watts
Input Voltage	120-277 VAC ± 10% Universal 120 VAC ± 10% Dedicated
Input Frequency	50/60Hz

APPROVALS:

- UL 8750 recognized component



ELECTRICAL SPECIFICATIONS

Watts	Rated Current (mA)	Output Voltage	Dimming Type	Input Voltage	Input Power	Input Current 120/277V	Power Factor	Efficiency	Hatch Part Number	Case Style
-------	--------------------	----------------	--------------	---------------	-------------	------------------------	--------------	------------	-------------------	------------

Dimming Models

22	350mA	21-63 VDC	Phase Dimming	120 VAC	27W	0.25A	>0.90	81%	LC22-0350P-120-D	D
	500mA	10-40 VDC	Phase Dimming	120 VAC	25W	0.23A	>0.90	81%	LC22-0500P-120-D	D
	600mA	10-36 VDC	Phase Dimming	120 VAC	27W	0.25A	>0.90	81%	LC22-0600P-120-D	D
	700mA	10-32 VDC	Phase Dimming	120 VAC	27W	0.25A	>0.90	81%	LC22-0700P-120-D	D
	800mA	10-28 VDC	Phase Dimming	120 VAC	27W	0.25A	>0.90	81%	LC22-0800P-120-D	D
	900mA	6-24 VDC	Phase Dimming	120 VAC	27W	0.25A	>0.90	81%	LC22-0900P-120-D	D
	1000mA	6-22 VDC	Phase Dimming	120 VAC	27W	0.25A	>0.90	81%	LC22-1000P-120-D	D
	1050mA	6-21 VDC	Phase Dimming	120 VAC	27W	1.25A	>0.90	81%	LC22-1050P-120-D	D
	1100mA	6-20 VDC	Phase Dimming	120 VAC	27W	0.25A	>0.90	81%	LC22-1100P-120-D	D
	1200mA	6-18 VDC	Phase Dimming	120 VAC	27W	0.25A	>0.90	81%	LC22-1200P-120-D	D
22	350mA	32-63 VDC	0-10V Dimming	Universal 120 - 277 VAC	27W	0.25A / 0.12A	>0.90	81%	LC22-0350Z-UNV-S	S
	500mA	22-44 VDC	0-10V Dimming	Universal 120 - 277 VAC	27W	0.25A / 0.12A	>0.90	81%	LC22-0500Z-UNV-S	S
	600mA	18-36 VDC	0-10V Dimming	Universal 120 - 277 VAC	27W	0.25A / 0.12A	>0.90	81%	LC22-0600Z-UNV-S	S
	700mA	16-32 VDC	0-10V Dimming	Universal 120 - 277 VAC	27W	0.25A / 0.12A	>0.90	81%	LC22-0700Z-UNV-S	S
	1050mA	12-21 VDC	0-10V Dimming	Universal 120 - 277 VAC	27W	0.25A / 0.12A	>0.90	81%	LC22-1050Z-UNV-S	S

Non-Dimming Models

22	350mA	21-63 VDC	Non-Dimming	Universal 120 - 277 VAC	27W	0.26A / 0.12A	>0.90	80%	LC22-0350N-UNV-D	D
	500mA	14-44 VDC	Non-Dimming	Universal 120 - 277 VAC	27W	0.26A / 0.12A	>0.90	81%	LC22-0500N-UNV-D	D
	600mA	12-36 VDC	Non-Dimming	Universal 120 - 277 VAC	27W	0.26A / 0.12A	>0.90	81%	LC22-0600N-UNV-D	D
	700mA	10-32 VDC	Non-Dimming	Universal 120 - 277 VAC	27W	0.26A / 0.12A	>0.90	81%	LC22-0700N-UNV-D	D
	1050mA	7-21 VDC	Non-Dimming	Universal 120 - 277 VAC	27W	0.26A / 0.12A	>0.90	81%	LC22-1050N-UNV-D	D
	1540mA	7-14 VDC	Non-Dimming	Universal 120 - 277 VAC	27W	0.26A / 0.12A	>0.90	81%	LC22-1540N-UNV-D	D

PRODUCT FEATURES :

- Protection: Short circuit and overload protection
- EMC: Meets FCC47 CFR Part 15 (Class B) Consumer Limits @ 120V
- EMC: Meets FCC47 CFR Part 15 (Class A) Non Consumer limits @ 277V
- Type 1 Outdoor, suitable for dry and damp locations (IP20)
- Phase dimming models can dim with leading or trailing edge dimmers

- Withstanding Voltage: I/P – O/P 2kVAC
- Temperature Range: -30° - 60°C

CASE DIMENSIONS & MECHANICAL SPECIFICATIONS ON PAGE 2

LED Driver Type	Constant Current (Class 2)
Maximum Wattage	22 Watts
Input Voltage	120-277 VAC ± 10% Universal 120 VAC ± 10% Dedicated
Input Frequency	50/60Hz

APPROVALS:

- UL 8750 recognized component
- EN61000-3-2



L SERIES

LEDDRIVERS

CASE DIMENSIONS & MECHANICAL SPECIFICATIONS:

CASE STYLE

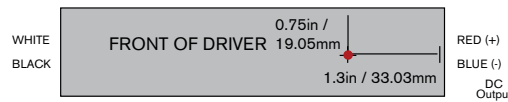
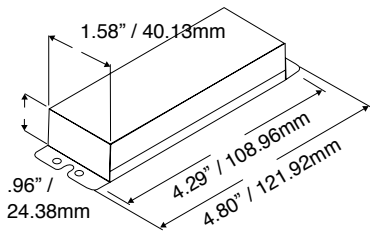
D - Metal Casing

Wiring Information

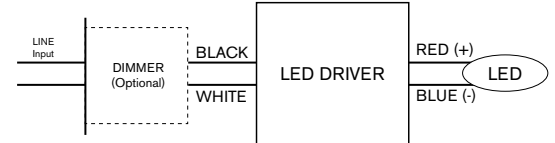
Input : 12", UL 1316 #18AWG (Black and White)
12", UL 1569 #18AWG (with Non-Class 2 output)
12", UL 1316/1430 #22AWG (with Class 2 output)
Output : (Red and Blue)

Tc Point Location

Max. T c Point Temp.: 90°C



DIMMING WIRING DIAGRAM:



NON-DIMMING WIRING DIAGRAM:



Packaging Information

Weight : 7.76oz
Quantity : 60pcs/carton

CASE STYLE

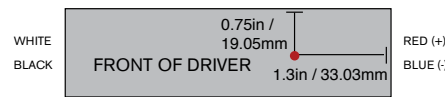
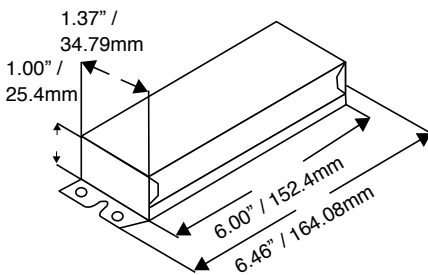
S - Metal Casing

Wiring Information

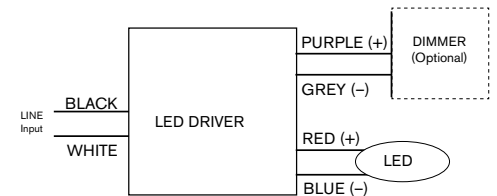
Input : 12", UL 1316#18AWG (Black and White)
12", UL 1569#18AWG (with Non-Class 2 output)
12", UL 1316/1430#22AWG (with Class 2 output)
Output : (Red and Blue)

Tc Point Location

Max. T c Point Temp.: 90°C



DIMMING WIRING DIAGRAM:



Packaging Information

Weight : 8.1oz
Quantity : 20pcs/carton