



LLED-8150-50K 150W High Mast / Shoe Box / High Bay / Canopy Retrofit Kit

Models

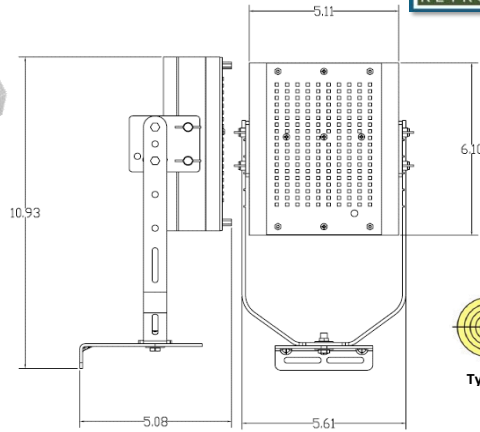
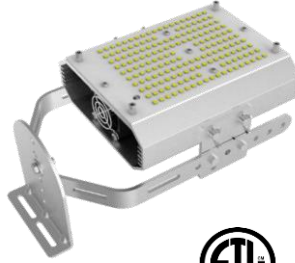
LED-8150-50K, 120-277VAC, cETLus, 5000K CCT

Description

Light Efficient Design's High Bay retrofits replace HID lamps up to 400W HID. Advanced Active Cooling technology improves thermal performance and delivers the highest light output along with longer LED and driver life versus lamps limited to passive cooling. Innovative aluminum heat sink with integrated cooling fans.

Features

- *150W LED Replaces 400W MH or HPS HID Lamps
- *Up to 21,000 lumen output and 140 LPW efficacy
- * 5000K CCT
- *Secure Bolt on retrofit design, universal yoke mounting can be configured as a Shoe Box, High Bay, High Mast, or Canopy retrofit.
- *ETL approved for damp environments and enclosed fixtures
- *Advanced active cooling: Active cooling keeps driver and LED array cool for full 50,000 hr rated LED life
- *50,000 hour rated LED life (supported by LM80 and ISTMT reports (see website))



TECHNICAL SPECIFICATIONS - USA 120-277V - ALL MODELS cETLus

| MODEL | VOLTAGE | WATTAGE | LUMENS* | LPW* | REPLACES | BASE | CCT | CRI* | THD* | PF* | R9* | Duv* | LIGHT DISTRIBUTION | DIMMABLE |
|--------------|----------|---------|---------|------|----------|------|-------|------|------|------|-----|------|--------------------|----------|
| LED-8150-50K | 120-277V | 150W | 21000 | 140 | 400W HID | N/A | 5000K | >70 | <20% | >.90 | N/A | N/A | Directional / 120° | Yes |

PACKAGING SPECIFICATIONS

| MODEL | PRODUCT DIMENSION | PRODUCT WEIGHT | UNIT CARTON DIMENSION | UNIT CTN WT | SHIPPER CARTON DIMENSION | SHIPPER CTN WT | CARTON QUANTITY |
|--------------|---|----------------|---|---------------|---|----------------|-----------------|
| LED-8150-50K | 10.9 X 6.1 X 5.08 in./ 276 X 154 X 129 mm | 10 Lbs | 17.3 X 16.5 X 6.02 in./ 439 X 419 X 153 mm. | 11 lbs./5 kg. | 17.3 X 16.5 X 6.02 in./ 439 X 419 X 153 mm. | 11 lbs./5 kg. | 1 |

UPC / UCC

DESIGN LIGHTS CONSORTIUM QPL CERTIFICATION SUMMARY (E39 MODELS ONLY)

| MODEL | PRODUCT UPC | CARTON UCC | QPL CATEGORY 1 | PRODUCT CODE | FAMILY CODE | QPL CATEGORY 2 | PRODUCT CODE | FAMILY CODE |
|--------------|----------------|-------------------|----------------|--------------|-------------|----------------|--------------|-------------|
| LED-8150-50K | 8440060 8374 8 | 10 8440060 8374 5 | N/A | N/A | N/A | N/A | N/A | N/A |

ENERGY SAVING vs. HID

| | |
|--|----------|
| LED Lamp Power (watts) | 150 |
| HID Lamp Power (watts) | 400 |
| HID Ballast Power (watts) | 60 |
| Total power Savings (watts) | 310 |
| Annual Energy Savings | \$ 174 |
| Lifetime Energy Savings over 50,000 hrs) | \$ 1,705 |

This model includes a Meanwell HLG-150H series external driver. Approximate dimensions of the driver are 9.00" x 2.83" x 1.54"



Mounting Orientation

| BASE DOWN | BASE UP | HORIZONTAL |
|-----------|----------|------------|
| | | |
| APPROVED | APPROVED | APPROVED |

Recommended Minimum Fixture Size

| | |
|------------------|-----|
| Height | N/A |
| Width | N/A |
| Volume (Cu. In.) | N/A |

THERMAL SPECIFICATIONS

| OPERATING TEMPERATURE | -40°F to +113°F / -40°C to +45°C |
|-----------------------|----------------------------------|
|-----------------------|----------------------------------|

IN-SITU TEMP MEASUREMENT/L70

| | |
|-----------------------------|-----|
| LED TEMPERATURE* | TBD |
| L70 LED LUMEN MAINTAINENCE* | TBD |

* FROM ISTMT REPORT AT 77°F

SHOE BOX



FLOOD LIGHT



WALL PACK



CANOPY

