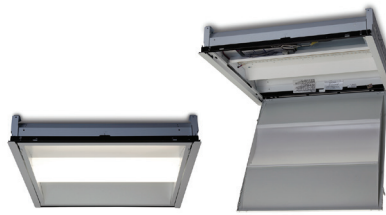


Refit™ LED Door Kit

2' x 2' Refit Door Kit
2' x 4' Refit Door Kit



Project name _____

Date _____

Type _____

Product Description:

Ultimate refit solution serves as an upgrade to Linear Fluorescent Fixture that provides high uniformity, excellent efficiency and reduced glare in 2'x2' and 2'x4' applications. The lumen maintenance at L70 of initial lumens at 50,000 hours of operation, allows lower maintenance costs over time. It is suitable for indoor general lighting.

Performance Summary 2' x 2':

Delivered Lumen Output: 2000lm (4000K), 1950lm (3500K)
System Input Power: 21W
Standard Dimming Compatibility: 0-10V
Efficacy: 93 LPW (4000K), 91 LPW (3500K)
Input Voltage: 120-277V
CCT: 3500K, 4000K
Typical CRI: 80+
Color Consistency: 4 Step MacAdam Ellipse
Lifetime Rating: 50,000 Hours @ L70
Input Frequency (Hz): 50/60Hz
Power Factor: >0.9
Dimensions: 21.9" (L) x 22.5" (W) x 3.4" (H)
THD: <20%
Mounting: Fits most all 2' x 2' standard fixtures
Maximum Weight: 3 lbs
Limited Warranty: 5 Years Standard
Files Available: LM79, LM80, IES

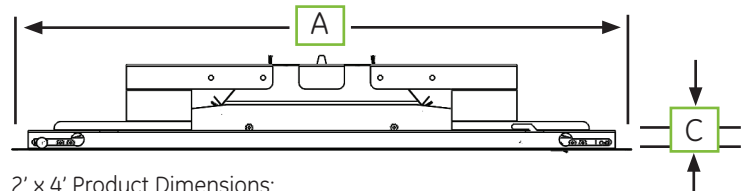
Performance Summary 2' x 4':

Delivered Lumen Output: 4100 lm (4000K), 3900 lm (3500K)
System Input Power: 36W
Standard Dimming Compatibility: 0-10V
Efficacy: 112 LPW (4000K), 106 LPW (3500K)
Input Voltage: 120-277V
CCT: 3500K, 4000K
Typical CRI: 80+
Color Consistency: 4 Step MacAdam Ellipse
Lifetime Rating: 50,000 Hours @ L70
Input Frequency (Hz): 50/60Hz
Power Factor: >0.9
Dimensions: 46.6" (L) x 22.5" (W) x 3.4" (H)
THD: <20%
Mounting: Fits most all 2' x 4' standard fixtures
Maximum Weight: 5 lbs
Limited Warranty: 5 Years Standard
Files Available: LM79, LM80, IES

Product Dimensions:



2' x 2' Product Dimensions:
A = 22.5 in (571.5 mm) B = 21.9 in (556.3 mm) C = 3.4 in (86.4 mm)



2' x 4' Product Dimensions:
A = 46.6 in (1183.6mm) B = 22.5 in (571.5mm) C = 3.4 in (86.4mm)

Certified by: 

Ordering Information:

PRODUCT CODE	DESCRIPTION CODE	DESCRIPTION	MODEL SERIES	CRI	COLOR TEMP (K)	TYPICAL LUMENS	SYSTEM WATTAGE
LED20/DK22/835/10/SO	208160	2x2 Refit Door Kit 835 0-10V SO	Refit 2x2	83	3500	1950	21W
LED20/DK22/840/10/SO	208161	2x2 Refit Door Kit 840 0-10V SO	Refit 2x2	82	4000	2000	21W
LED35/DK24/835/10/SO	208162	2x4 Refit Door Kit 835 0-10V SO	Refit 2x4	83	3500	3900	36W
LED35/DK24/840/10/SO	208163	2x4 Refit Door Kit 840 0-10V SO	Refit 2x4	82	4000	4100	36W

a product of
ecomagination™



imagination at work

