

Catalog Number
Notes
Type

FEATURES & SPECIFICATIONS

INTENDED USE

This fresh and innovative track head combines aesthetics with superior functionality for applications such as specialty retail, hospitality, residential multi-family and educational environments.

CONSTRUCTION

Lamp Holder: Multi-directional 3-head metal step baffle shade kit to shed light in desired areas of any application. Kit includes (1) 44" black track (120V), (1) floating feed and (3) adjustable track heads.

Available in matte white or black finishes.

ELECTRICAL

E-26 medium-base porcelain socket for use with BR20 lamps.

LISTINGS

cETL_{us} listed to UL1574 Track Lighting Standard.

Dry location.

WARRANTY

1-year limited warranty. Complete warranty terms located at:

www.acuitybrands.com/CustomerResources/Terms_and_conditions.aspx.

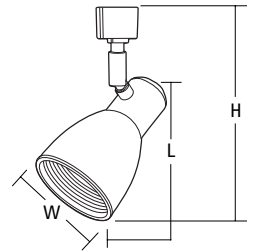
Note: Actual performance may differ as a result of end-user environment and application.

Specifications subject to change without notice.

Decorative Track Lighting

LTKNSTBF BR20 SERIES

Step Baffle Track Kit

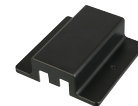


Specifications			
Lamp designation	Width	Length	Maximum height
BR20	3-3/8	5-1/2	7-1/2

All dimensions are inches (centimeters) unless otherwise indicated.



44" black track (120V)
(included)



LTNFC - floating feed
(included)



LTHNSTBF BR20 (qty 3) - adjustable track heads
(included)

ORDERING INFORMATION

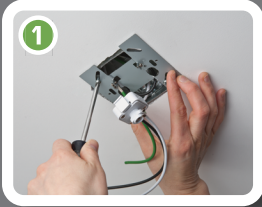
For shortest lead times, configure product using **bolded options**.

Example: LTKNSTBF BR20 DBL

LTKNSTBF	BR20	
Series	Lamp Type/ Maximum Wattage	Finish
LTKNSTBF BR20 LED lamp step baffle track kit	BR20 BR20 Lamp/75W Halogen 8W LED	DBL Black MW Matte white

INSTALLATION INSTRUCTIONS

Easy to Install in 4 Steps



1 Install mounting plate to ceiling.



2 Connect track to mounting plate and wire.



3 Attach track to ceiling.



4 Simply twist heads onto track.