

REVISIONS		
REV	DESCRIPTION	DATE
C0	CHANGED PER ECN 15-018	07/18/2015
B1	CHANGED PER ECN 15-005	03/23/2015
B0	CHANGED PER ECN 14-014	09/12/2014
A0	RELEASE TO PRODUCTION	07/21/2014

**SAFETY STANDARDS COMPLIANCE:**  
 UL8750  
 UL1310

LVD EN61347-2-13  
 EMI STANDARDS:  
 FCC 47 CFR PART 15 CLASS B  
 CE EN55015, EN61547  
 EN61000-4-2,3,4,5,6,8,11

**SAFETY CERTIFICATIONS**  
 UL cUL E357847  
 CE LVD A001E121227005S  
 EMC A001E121227005E  
 FCC A001E130624018E

**INPUT RANGE:**  
 110-277 VAC, 230-90mA  
 @ FULL LOAD.

**FREQUENCY:** 60 Hz.  
**EFFICIENCY:** 87 % Typ.  
**PEAK INRUSH:**  
 39 AMPS @ 110V AC  
 42 AMPS @ 230V AC

**DIMMING:**  
 AC Phase - Trailing edge only

**POWER FACTOR:** 0.97  
**LEAKAGE CURRENT:**  
 < 0.01mA @120VAC  
 Surge Immunity: 2.5K Vac

STANDARD LOAD RANGE:				
OUTPUT	MIN	MAX	LOAD REG	MAX. RIP
370mA	32V	42V	±5%	2.4%

**COOLING:** CONVECTION  
**NOISE LEVEL:** <24 dB (Doc A001E130422009K)

**PROTECTION:**  
 OCP,SCP,OVP  
 AUTO-RECOVERY

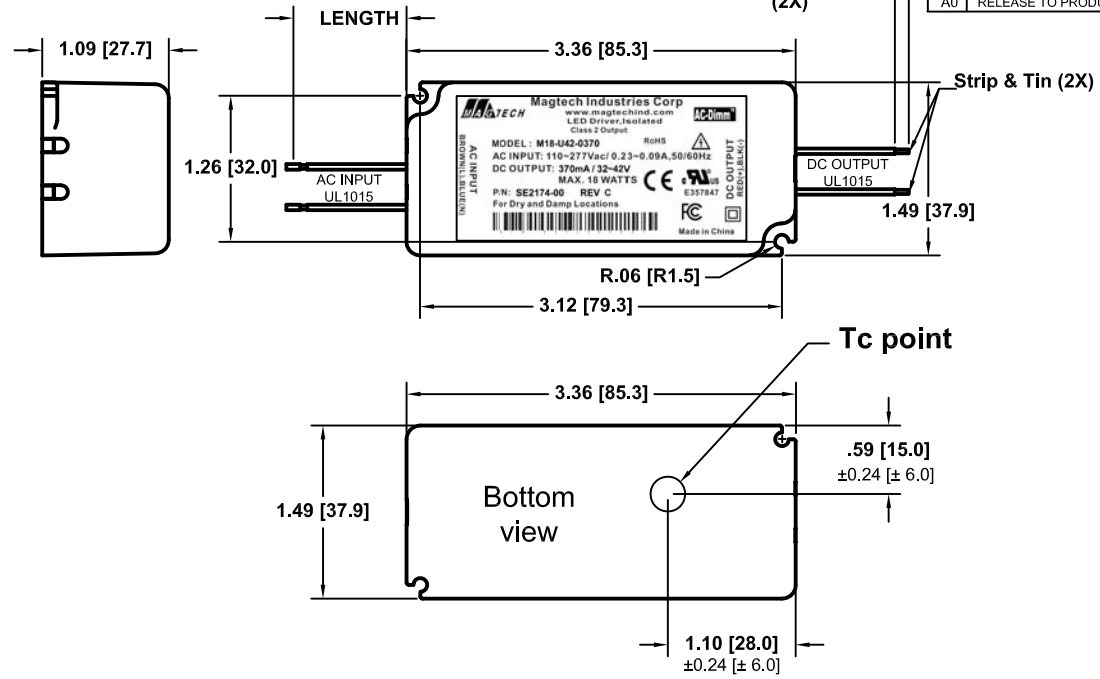
**RELIABILITY (MTBF):** (MIL-HDBK-217E)  
 100,000 HRS. @ 25 DEG. C @ FULL LOAD

**ENVIRONMENTAL CONDITIONS:**  
 OPERATING TEMPERATURE: -20 ~ 50°C  
 RELATIVE HUMIDITY: 5 ~ 95%  
 LOCATION: For Dry and Damp Use Only

**CONNECTOR:**  
 N/A

PF, THD AND EFFICIENCY CALCULATIONS ARE BASED ON THE LOADING OF THE DRIVER TO MINIMUM 65% AND MAXIMUM 100% OF 18W

- Notes:
- 1.- 5 yrs warr provided tc point remains below 80°C
  - 2.- Bar code defined by drawing 77-0120.
  - 3.- Transformer - Class 130 (B), Insulation system
  - 4.- Start up time is < 0.75 second



**NON STANDARD WIRES**

CON	PIN	COLOR	OUTPUT	AWG	LENGTH
AC	--	BROWN	LINE	18	6.5 [165]
IN	--	BLUE	NEUTRAL	18	± 0.5 [± 13]
DC	--	RED	+V	20	14.0 [356]
OUT	--	BLACK	GND	20	± 1.0 [± 25]

MANUFACTURED BY: ES

THIS ITEM IS THE PROPERTY OF MAGTECH INDUSTRIES AND CONTAINS PROPRIETARY CONFIDENTIAL AND TRADE SECRET INFORMATION. THE INFORMATION CONTAINED HEREIN MUST NOT BE USED, DISCLOSED OR REPRODUCED IN WHOLE OR IN PART WITHOUT PRIOR WRITTEN CONSENT FROM MAGTECH INC.

UNLESS OTHERWISE SPECIFIED Q.C:

DIMENSIONS IN INCHES (MM)

TOLERANCES:  
 .X DECIMALS ± .05 (1.3)  
 .XX DECIMALS ± .02 (0.5)  
 .XXX DECIMALS ± .005 (0.13)  
 ANGLES ± 1°  
 FRACTIONS ± 1/16

DO NOT SCALE THIS DRAWING

INTERPRET DRAWING PER ANSI Y14.5M

APPROVAL DATE: 08/15/2014

EFFECTIVE DATE: 03/19/2014

MODEL NO. M18-U42-0370

DWG NO. M20-4366

REV. C0

SH OF 1 1

**MAGTECH**

TITLE: M18-U42-0370, CN-0197, 100-277VAC, 370mA, 32-42V, AC DIMM, 5YRS