

REVISIONS		
REV	DESCRIPTION	DATE
B1	CHANGED PER ECN 22-004	12/21/2022
B0	CHANGED PER ECN 16-011	03/29/2016
A1	CHANGED PER ECN 16-011	03/25/2016
A0	RELEASE TO PRODUCTION	02/12/2016

**SAFETY STANDARDS COMPLIANCE:**  
 UL8750  
 UL1310

LVD EN61347-2-13  
 EMI STANDARDS:  
 FCC 47 CFR PART 15 CLASS B  
 CE EN55015, EN61547  
 EN61000-4-2,3,4,5,6,8,11

**SAFETY CERTIFICATIONS**  
 UL, cUL E357847  
 FCC A001E130624017E  
 EMC dir A001E121227003E  
 LVD A001E121227003S

**INPUT RANGE:**  
 110-277 VAC, 140-60mA @ FULL LOAD.

**FREQUENCY:** 60 Hz.

**EFFICIENCY:** 87 % Typ.

**PEAK INRUSH:**  
 10 AMPS @ 110V AC  
 20 AMPS @ 220V AC

**DIMMING:**  
 AC Phase - Trailing edge only  
 THD: <20%

**POWER FACTOR:** 0.97

**LEAKAGE CURRENT:**  
 < 0.01mA @120VAC  
 Surge Immunity: 2.5K Vac

LOAD CAPACITY:	9 WATTS
OUTPUT	MIN MAX LOAD REG MAX. RIP
260mA	30V 40V ±5% 2.4%

**COOLING:** CONVECTION

**NOISE LEVEL:** <24 dB (Doc A001E130422009K)

**RELIABILITY (MTBF):** (MIL-HDBK-217E)  
 100,000 HRS. @ 25 DEG. C @ FULL LOAD

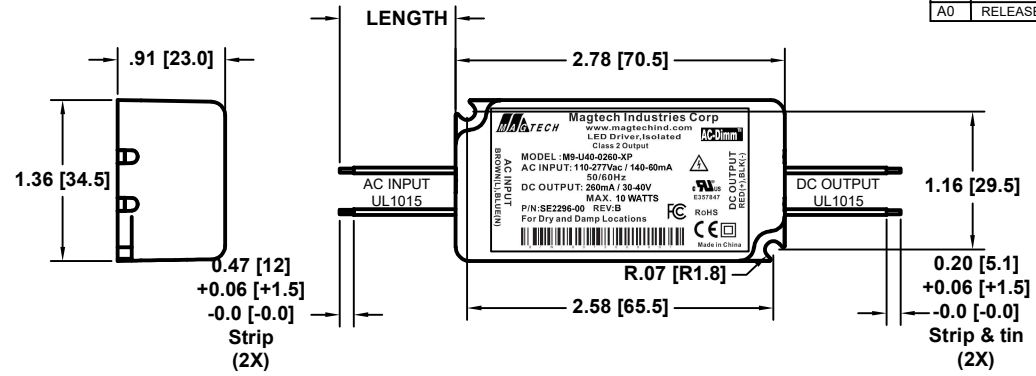
**ENVIRONMENTAL CONDITIONS:**  
 OPERATING TEMPERATURE: -20°C, Tc=90°C  
 RELATIVE HUMIDITY: 5 ~ 95%  
 LOCATION: For Dry and Damp Use Only

**CONNECTOR:**  
 N/A

**PROTECTION:**  
 OCP,SCP,OVP  
 AUTO-RECOVERY

PF, THD AND EFFICIENCY CALCULATIONS ARE BASED ON THE LOADING OF THE DRIVER TO MINIMUM 65% AND MAXIMUM 100% OF 10W

- Notes:
- 5 yrs warr provided tc point remains below 80°C
  - Bar code defined by drawing 77-0120.
  - Transformer - Class 130 (B), Insulation system
  - Start up time is < 0.75 sec
  - UL Type TL and Type HL



**MAGTECH** Magtech Industries Corp  
 www.magtechind.com  
 LED Driver, Isolated  
 Class 2 Output  
**AC-Dimm™**

MODEL : M9-U40-0260-XP  
 AC INPUT: 110-277Vac / 140-60mA  
 50/60Hz  
 DC OUTPUT: 260mA / 30-40V  
 MAX. 10 WATTS  
 P/N: SE2296-00 REV: B  
 For Dry and Damp Locations

AC INPUT BROWN(L), BLUE(N)  
 DC OUTPUT RED(+), BLK(-)

RoHS  
 CE  
 Made in China

**Testing Parameters:**

- The COB is Nichia LED is NTCLS024B-V1
- Dimming Controls are:  
 Lutron DIVA-DVELV  
 Leviton Vizia VPE06-1LX  
 Lutron MAESTRO-MAELV
- Specific Standards:  
 Turn-on Time: <.75secs  
 Current regulation: <±5% (247mA-273mA)  
 Flicker Free @ 120 & 277VAC  
 Eff, PF & THD recorded @  
 120 & 277VAC input @ 35.1Vdc & 37Vdc  
 Max Ripple Current Pk-Pk 50%

CON	PIN	COLOR	OUTPUT	AWG	LENGTH
AC	---	BROWN	LINE	18	6.5 [165]
IN	---	BLUE	NEUTRAL	18	
DC	---	RED	+V	20	± 0.5 [± 13]
OUT	---	BLACK	GND	20	

MANUFACTURED BY: E.S. Juno

THIS ITEM IS THE PROPERTY OF MAGTECH INDUSTRIES AND CONTAINS PROPRIETARY CONFIDENTIAL AND TRADE SECRET INFORMATION. THE INFORMATION CONTAINED HEREIN MUST NOT BE USED, DISCLOSED OR REPRODUCED IN WHOLE OR IN PART WITHOUT PRIOR WRITTEN CONSENT FROM MAGTECH INC.

UNLESS OTHERWISE SPECIFIED  
 DIMENSIONS IN INCHES (MM)  
 TOLERANCES:  
 .X DECIMALS: ± .05 (1.3)  
 .XX DECIMALS: ± .02 (0.5)  
 .XXX DECIMALS: ± .005 (0.13)  
 ANGLES: 1°  
 FRACTIONS: 1/16

QC:

TITLE:  
 M9-U40-0260-XP, CN-0197, 110-277VAC, 260mA, 30-40V, 5YRS

DO NOT SCALE THIS DRAWING  
 INTERPRET DRAWING PER  
 ANSI Y14.5M

APPROVAL DATE: 02/19/2016  
 EFFECTIVE DATE: 02/12/2016

MODEL NO.  
 M9-U40-0260-XP

DWG NO.  
 M20-4539

REV. B1

SH OF  
 1 1

FORM PF-004