

high performance for volumetric spaces

*E26 Edison Screw Base Adapter (included for retrofit of non-LED housings).

Housing + Module + Trim =
Complete luminaire



ML56 Module

LED light engine

The ML56 light modules are integrated LED engines that include a LED chip package, LED driver, heat sink, and lens in a modular design that allows interchangeable use with designated ML56 5" and 6" LED trims.

The ML56 light module design features an inside frost diffusing lens that looks like a traditional lamp for visual comfort and aesthetic familiarity. The diffusing lens provides uniform illumination.



ML56 Ordering Information

A complete luminaire consists of a housing, LED module and trim. Order separately.

LED Modules			Beam Forming Optic / Media 1200 Series Accessories*	ML56 System Accessories
600 Series ML5606927= 5"/6" LED module, 90CRI, 2700K ML5606930= 5"/6" LED module, 90CRI, 3000K ML5606935= 5"/6" LED module, 90CRI, 3500K ML5606940= 5"/6" LED module, 90CRI, 4000K 600 Series D2W - Dim to Warm Light Module ML5606D2W930= 5"/6" DIM to warm LED module, 600 lumen, 90CRI, 3000K to 1850K	900 Series ML5609927= 5"/6" LED module, 90CRI, 2700K ML5609930= 5"/6" LED module, 90CRI, 3000K ML5609935= 5"/6" LED module, 90CRI, 3500K ML5609940= 5"/6" LED module, 90CRI, 4000K 900 Series D2W - Dim to Warm Light Module ML5609D2W930= 5"/6" DIM to warm LED module, 900 lumen, 90CRI, 3000K to 1850K	1200 Series ML5612927= 5"/6" LED module, 90CRI, 2700K ML5612930= 5"/6" LED module, 90CRI, 3000K ML5612935= 5"/6" LED module, 90CRI, 3500K ML5612940= 5"/6" LED module, 90CRI, 4000K ML5612927D010= 5"/6" LED module, 90CRI, 2700K, 0-10V ⁽¹⁾ ML5612930D010= 5"/6" LED module, 90CRI, 3000K, 0-10V ⁽¹⁾ ML5612935D010= 5"/6" LED module, 90CRI, 3500K, 0-10V ⁽¹⁾ ML5612940D010= 5"/6" LED module, 90CRI, 4000K, 0-10V ⁽¹⁾ D2W - Dim to Warm Light Module ML5612D2W930= 5"/6" DIM to warm LED module, 1200 lumen, 90CRI, 3000K to 1850K	BFR56NFL = Beam forming reflector kit, narrow flood, 25° nominal BFR56MH = Media holder, accepts one 3.45" lens. Requires BFR56NFL & L345SF, order separately L345SF = 3.45" diameter soft focus lens. Requires BFR56NFL and BFR56MH, order separately	ML7RAB =Retrofit adapter band for housings without torsion spring receivers. The ML7RAB kit supplies parts to retrofit four housings; the kit includes: 4 – Retrofit adapter bands with screws and locking wire nuts

*Beam forming optics/media not recommended for use with ML5612D2W930 LED module.

*For California non-E26 base product place -CA suffix at the end of catalog number (ie ML5606927-CA).

(1) UNV 120-277V 50-60Hz, 0-10V analog 5% dimming

Consult ML56 LED Light module specification sheets for applicable trim listings.

ML56 Module

The LED light modules diffusing lens is interchangeable with an optional 25° narrow flood (NFL) beam forming lens.



standard diffusing lens



narrow flood (NFL) lens

ML56 Optics

standard diffusing lens
(included)



BFR56NFL
narrow flood lens (NFL)



BFR56MH⁺
media holder
(requires BFR56NFL & L345SF, ordered separately)

L345SF
soft focus lens
(requires BFR56NFL & BFR56MH, ordered separately)



Trims

The finishing touch

Multiple 5" and 6" baffle, reflector, and eyeball options allow the Halo ML56 LED downlighting system to be used in a variety of interior spaces. Choose the desired trim size, finish, and style to meet the needs of the application.

- Reflector and baffle trims are wet location listed for shower applications. Eyeball trims are damp location listed.
- Reflector and baffle trims make the ML56 and any compatible housing Air-Tite.
- Consult ML56 LED light module specification sheet for applicable trim listings.

Trims	Accessories	
<p><u>590 Series - 5" LED Trims</u></p> <p>591WB=5" LED trim, polymer "dead-front", shallow white baffle & flange – shallow and standard housings (For use with 600 Series LED light modules only)</p> <p>592SC=5" LED trim, specular reflector & white flange</p> <p>592H=5" LED trim, haze reflector & white flange</p> <p>592W=5" LED trim, white reflector & flange</p> <p>593WB=5" LED trim, white micro-step baffle & flange</p> <p>593BB=5" LED trim, black micro-step baffle & white flange</p> <p>593SNB=5" LED trim, satin nickel micro-step baffle & flange</p> <p>593TBZB=5" LED trim, tuscan bronze micro-step baffle & flange</p> <p>594WB=5" LED directional trim, white eyeball, baffle & flange – shallow and standard housings</p> <p>594SNB=5" LED directional trim, satin nickel eyeball, baffle & flange – shallow and standard housings</p> <p>594TBZB=5" LED directional trim, tuscan bronze eyeball, baffle & flange – shallow and standard housings</p> <p>595WW=5" LED trim, wall wash - specular reflector, repositionable specular kick reflector, white flange</p> <p>596WB=5" LED trim, white shallow baffle & flange – shallow and standard housings</p>	<p><u>690 Series - 6" LED Trims</u></p> <p>691WB=6" LED trim, polymer "dead-front", white shallow baffle & flange – shallow and standard housings (For use with 600 Series LED light modules only)</p> <p>692SC=6" LED trim, specular reflector & white flange</p> <p>692H=6" LED trim, haze reflector & white flange</p> <p>692W=6" LED trim, white reflector & flange</p> <p>693WB=6" LED trim, white micro-step baffle & flange</p> <p>693BB=6" LED trim, black micro-step baffle & white flange</p> <p>693SNB=6" LED trim, satin nickel micro-step baffle & flange</p> <p>693TBZB=6" LED trim, tuscan bronze micro-step baffle & flange</p> <p>694WB=6" LED directional trim, white eyeball, baffle & flange – shallow and standard housings</p> <p>694SNB=6" LED directional trim, satin nickel eyeball, baffle & flange – shallow and standard housings</p> <p>694TBZB=6" LED directional trim, tuscan bronze eyeball, baffle & flange – shallow and standard housings</p> <p>695WW=6" LED trim, wall wash - specular reflector, repositionable specular kick reflector, white flange</p> <p>696WB=6" LED trim, white shallow baffle & flange – for use with shallow and standard housings</p>	<p>ML56CLIP=Friction clip mounting kit - for retrofitting non-torsion spring housings, 6" clips*</p> <p>WW595SC=5" Wall wash insert - kick reflector for 595WW (1-included with trim) double or corner wall wash**</p> <p>WW695SC=6" Wall wash insert - kick reflector for 695WW (1-included with trim) double or corner wall wash**</p> <p>TRM590WH=5" LED oversize trim ring for use with 59* series trims, white 6.3" I.D., 7.5" O.D. Ring slips over LED trim. Inset design allows 5" trim to fit into oversize ring for an even trim surface</p> <p>TRM690WH=6" LED oversize trim ring for use with 69* series trims, white 6.9" I.D., 9.5" O.D. Ring slips over LED trim. Inset design allows 6" trim to fit into oversize ring for an even trim surface</p>

*ML56CLIP is compatible with 6" baffle and reflector trims only (691, 692, 693, 695, 696 series). For eyeball trim (694 series) use ML7RAB retrofit adapter band.

**Wall wash trims 595WW and 695WW feature an exclusive repositionable kick reflector for fine-tuning adjustment of the wall wash effect. The WW595SC and WW695SC are repositionable kick reflectors sold separately for addition to the wall wash trim when a double or corner wall wash is needed, or for replacement of original kick reflector included with the trim.

Reflectors

Create wide light patterns and maximize the efficiency of the light source.



Eyeballs

Provide precise, variable directional lighting. Useful for directing to accent wall hangings, mantels, and task areas



Baffles

Trap and shape light to minimize aperture glare, reduce ceiling brightness, and narrow the focus of the downlighting beam.



Wall Washer

Provide same vertical surface illumination. The ML56 repositionable kick reflector allows the user to position within the 360 degree trim aperture.

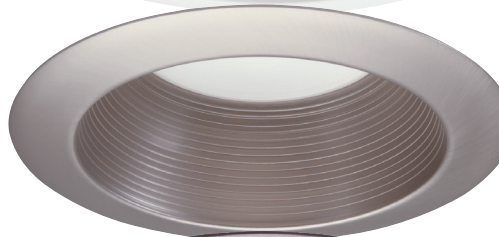


Trim Ring Finishes

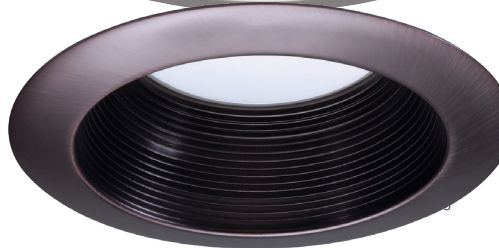
white



satin nickel



tuscan bronze



5" Trims

591

5" "dead front" shallow baffle



591WB

white "dead front" shallow baffle
(for 600 Series module only)

592

5" reflector



592W

white



592SC

specular clear



592H

haze

595

5" wall wash



595WW

specular reflector

596

5" shallow baffle



596WB

white shallow baffle and trim

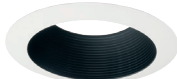
593

5" baffle



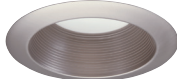
593WB

white baffle and trim



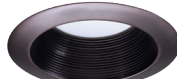
593BB

black baffle, white trim



593SN

satin nickel baffle and trim



593TBZ

tuscan bronze baffle and trim

594

5" eyeball



594WB

white



594SN

satin nickel



594TBZ

tuscan bronze

Accessory

5" oversize trim ring



TRM590WH
white

6" Trims

691

6" "dead front" shallow baffle



691WB

white "dead front" shallow baffle
(for 600 Series module only)

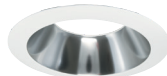
692

6" reflector



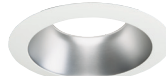
692W

white



692SC

specular clear



692H

haze

695

6" wall wash



695WW

specular reflector

696

6" shallow baffle

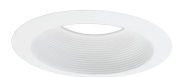


696WB

white shallow baffle and trim

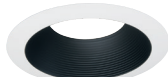
693

6" baffle



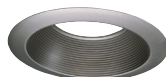
693WB

white baffle and trim



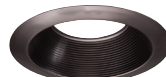
693BB

black baffle, white trim



693SN

satin nickel baffle and trim



693TBZ

tuscan bronze baffle and trim

694

6" eyeball



694WB

white



694TBZ

tuscan bronze

Accessory

6" oversize trim ring



TRM690WH
white