

Magnitude Otter™

Specification Sheet

Landscape Transformer Series | 150W/300W

Magnitude Otter™ is a high-performance landscape transformer series for commercial and residential lighting applications.

Saves Installation Time

- Pre-punched knockouts with replaceable rubber covers
- Quick removal door and bottom panel
- Large wire connection lugs, tilted for easy access

Helps Prevent Callbacks

- IP65 enclosure prevents water, dust, and pest intrusion, extends the life of plug-in timers, controls and wire connections.
- Optional integrated surge protector guards against lightning strikes and power surges
- Lifetime warranty

Customer-pleasing Control Options

- Accommodates a wide variety of plug-in timers and wireless controls (Wi-Fi, Bluetooth, Zigbee)



Height	Width	Depth
11.46" (291.08mm)	6.132" (155.75mm)	5.69" (144.55mm)

Enclosure: 20 gauge 304 stainless-steel housing with stainless-steel fasteners

Installation: Wall or stanchion mount, pre-punched knockouts: 3/4", 1" & 2"

Input Wiring: 6-foot water-resistant cord and plug

Transformer: Encapsulated toroidal core

Input Voltage: 120VAC 50/60Hz

Output Voltage: 12/13/14/15 VAC nominal

Surge Protection*: Designed for ANSI C62.41-2002 Category C-low, 6kV/3kA

Enclosure Rating: IP65 (6: Dust-tight, 5: Protected against jets of water)

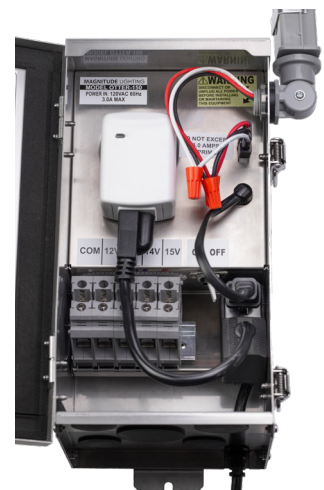
Listing: UL

Certification: Conforms to UL 1838 and CSA C22.2 No. 250.7:20, safety standards for landscape lighting transformers

Weight: 12 lbs. (150W) / 14 lbs. (300W)

Warranty: Lifetime

***Optional**



ORDERING GUIDE

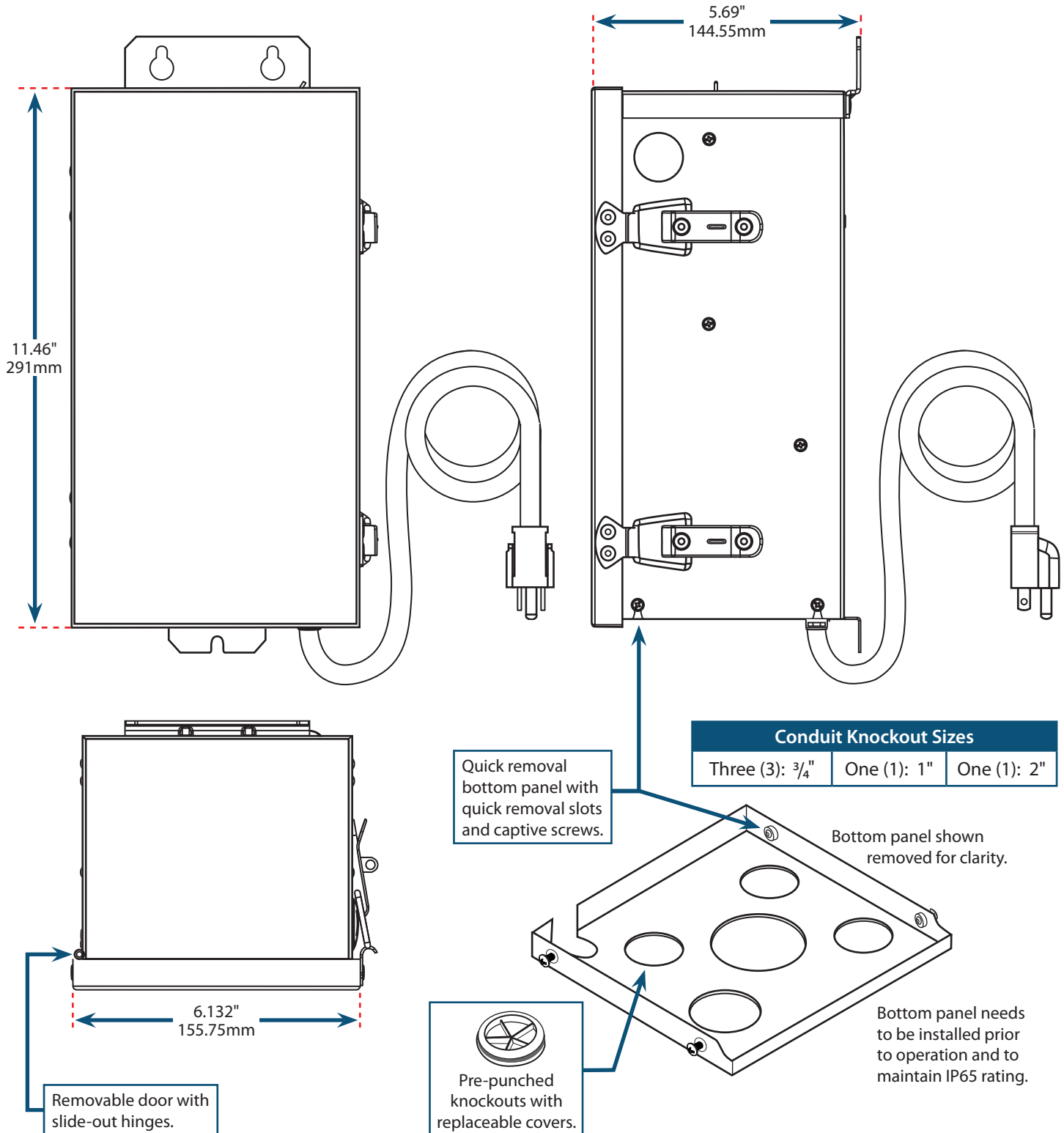
150 WATTS

Part Number	Description
OTR150L	150W
OTR150L-LS	150W, Light Sensor
OTR150L-LS-SP	150W, Light Sensor, Surge Protector
OTR150L-SP	150W, Surge Protector

300 WATTS

Part Number	Description
OTR300L	300W
OTR300L-LS	300W, Light Sensor
OTR300L-LS-SP	300W, Light Sensor, Surge Protector
OTR300L-SP	300W, Surge Protector

MECHANICAL DIAGRAMS



OPTIONS

SURGE PROTECTOR



Quick snap-in/plug-in installation engineered to meet ANSI surge protection standard for multiple lightning strikes.

LIGHT SENSOR

Provides a 30 second time delay to prevent accidental shutoff.

Temperature compensation system provides consistent performance regardless of weather.

Plug-in wiring hardware included.



(Product photos not to scale.)

SPECIFICATIONS

INPUT	150W	300W
Input Voltage Range	120VAC \pm 10%	120VAC \pm 10%
Input Frequency	50 / 60Hz	50 / 60Hz
Input Current	1.25A	2.45A
Efficiency	>91%	>91%
OUTPUT		
12V Tap (typ.) @ Max Load	150W MAX (11.22VAC, 13.44A)	270W MAX (10.97VAC 24.67A)
13V Tap (typ.) @ Max Load	150W MAX (11.85VAC, 12.71A)	270W MAX (11.86VAC 23.66A)
14V Tap (typ.) @ Max Load	150W MAX (12.87VAC, 11.67A)	300W MAX (12.62VAC 23.87A)
15V Tap (typ.) @ Max Load	150W MAX (13.84VAC, 10.97A)	300W MAX (13.61VAC 22.05A)
ENVIRONMENTAL		
Ingress Protection Rating	IP65	IP65
Minimum Installation Spacing	5" side/top, 1 ft. above ground	5" side/top, 1 ft. above ground
Thermal Class	B130°C	B130°C
PROTECTION		
Thermal Switch (Primary)	Auto Reset	Auto Reset
Circuit Breaker (Secondary)	Manual Reset	Manual Reset