

# SunLight2 PAR20 6500K LED Bulb

Single CCT Bulb



Input Voltage	120V AC
Wattage	10W
Nominal Lumens	900lm
CCT	6500K
CRI/R9	92+, 76+
Color Fidelity (Rf), Gamut (Rg)	94, 100
Percent Flicker	<20%
Dimming	Phase Dimmable
Dimming Range	100% - <0.7%
Beam Angles	24°, 36°, 60°



SunLight2 is an Architectural-Grade LED bulb optimized for an eye healthy lighting experience and no flicker. Its high CRI, full spectrum light provides exceptional color accuracy using patented LED technology.

## FEATURES

- Direct replacement for halogen bulbs
- E26 base
- High CRI 92+, R9 76+, TLCI\*95
- Zero ultraviolet emission, won't fade colors
- Beam angles 24°, 36° or 60°
- No flicker
- 3 years / 25k hours warranty

## APPLICATIONS

- Retail, Office and Commercial lighting
- Color-critical task lighting (apparel, groceries, hard goods & toys)
- Track lighting
- Down light (new & retrofit)
- Desk lamps
- Pendants
- Indoor & Outdoor

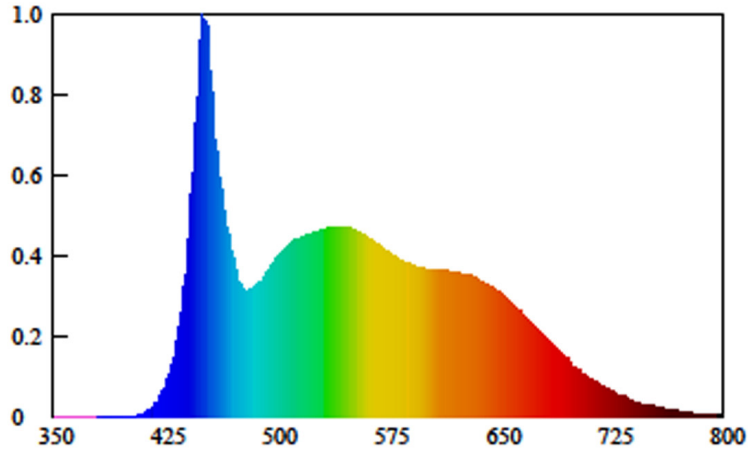
## MODEL SPECIFICATIONS

MODEL NUMBER	Watts	Input Voltage	CCT	LUMENS	BEAM ANGLE	*CASE FINISHES
PAR20A10W60K24B	10W	120V AC	6500K	900lm	24°	S(Silver), W(White), B(Black)
PAR20A10W60K36B	10W			900lm	36°	
PAR20A10W60K60B	10W			900lm	60°	

Custom Finishes Available

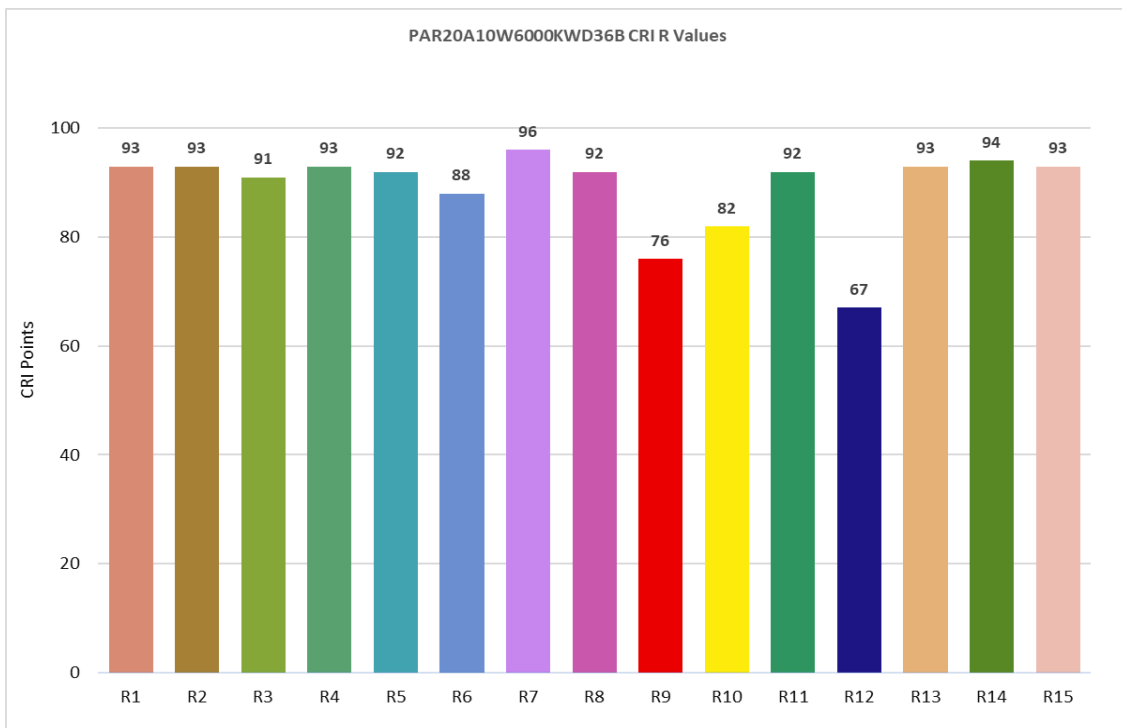
**SPECTRORADIOMETRIC CHART**

**6500K**



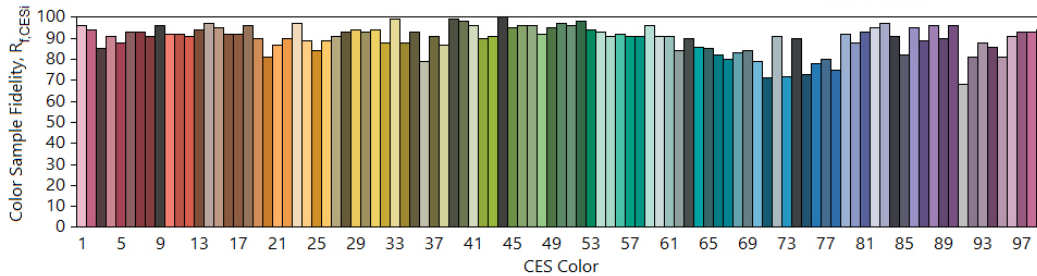
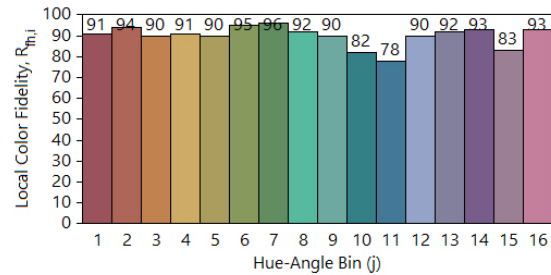
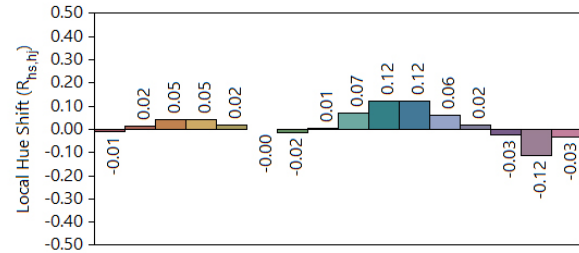
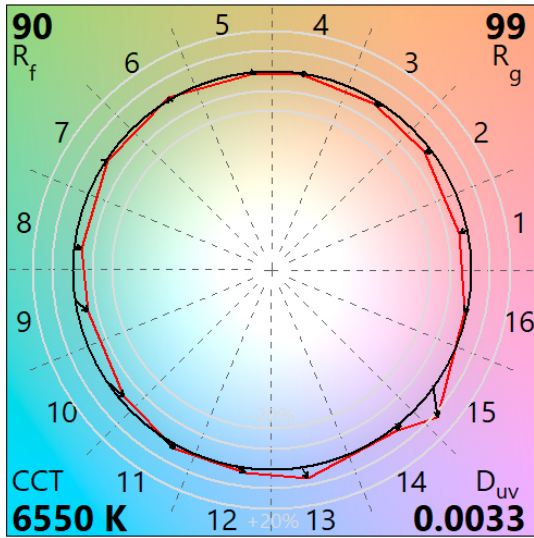
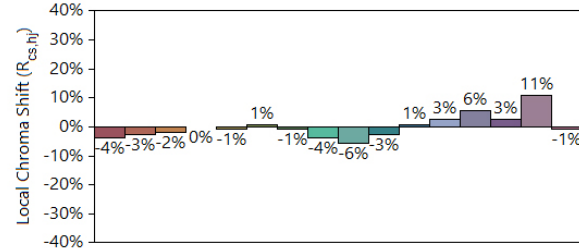
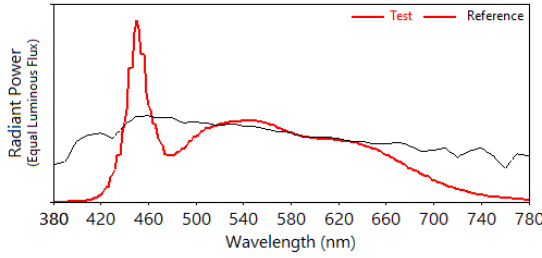
**CRI TEST**

**6500K**



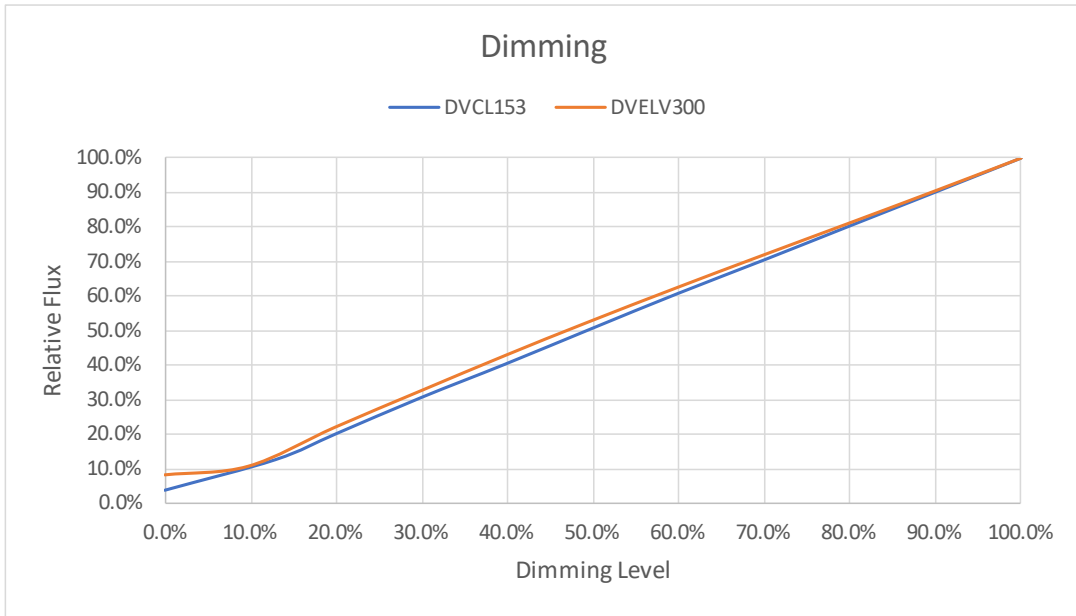
TM30 TEST

6500K



**DIMMING CURVE**

**6500K**



**MECHANICAL SPECIFICATIONS**

**PAR20**

