



CUSTOMER NAME _____

Project Name _____

Date _____ Type _____

Catalog Number _____

The Albeo PRC LED Series Round High Bay, a selectable lumens and selectable cct NSF IP65 Wet Rated luminaire is an exceptional mixture of value and performance. Ideal for high bay applications in industrial and commercial buildings. Designed to replace 175W–650W HID and four-to eight-lamp T5/T8 fixtures with unmatched reliability and quality.

ProLine®

CONSTRUCTION

Housing:	Die-cast Aluminum
Lens:	Polycarbonate
Paint:	Powder coat painted housing. No glass in housing or lenses
Weight:	6.5–9.5lb (2.95–4.30kg)
Optical Assembly:	90° clear optic, Optional polycarbonate refractor, drop lens, or aluminum reflector

OPTICAL SYSTEM

Lumens:	14,000-33,600 (Field Selectable)
Wattage:	100–240W
Efficacy:	Up to 140 LPW
CCT:	4000K, 5000K (Field Selectable)
CRI:	80
Glare Rating:	UGR<28

ELECTRICAL

Input Voltage:	120–277V
Input Frequency:	50/60Hz
Power Factor (PF)*:	>0.9*
Total Harmonic Distortion (THD)*:	<20%*
EMI:	FCC CFR Title 47 Part 15, Class A
Surge Protection:	100-277V 6KV surge protection

* PF and THD may vary with options

CONTROLS

Dimming:	Standard 0–10VDC, 10%
Sensors:	Field-installable 12V, not suitable for 24V working current <30mA

LUMEN AMBIENT TEMPERATURE

TYPE	TEMPERATURE RATE
OPERATING TEMPERATURE	With Sensor: –30°C to 50°C
	Without Sensor: –40°C to 50°C
STORAGE TEMPERATURE	With Sensor: –30°C to 70°C
	Without Sensor: –40°C to 70°C

LUMEN MAINTENANCE

LXX (10K) @ HOURS 50,000 HR
L70

MOUNTING

- **Typical Mounting:** 1/2" NPT hook included. Wall Mount bracket and safety tether may be ordered separately
- **Cord & Plugs:** 6ft cord included (pre-installed)

ADDITIONAL NOTES

- UL 1598 Suitable for Wet Locations (IP65)
- NSF Splash Zone rated

DESIGN LIFE & WARRANTY

- **Current's Limited 5-year Warranty:** Please refer to [IND599](#) in Product Downloads section at: <https://products.gecurrent.com>



CUSTOMER NAME _____

Project Name _____

Date _____ Type _____

Catalog Number _____

PRC **0** **08** **8L** **QV** **ST** **A** **Q** **B** _____

PRODUCT ID	VOLTAGE	LUMENS	CCT/CRI	OPTICS	CONTROLS	MOUNTING	CORD	PLUG	FINISH	OPTIONS
PRC	0 = 100–277V	1X = 14,000 – 21,000 2X = 21,000 – 33,600	08 = 4000k/5000K, 80 CRI	8L =90° lens	QV = 0–10V Dimming <i>Controls Ready</i>	ST = Hook/Ring <i>Additional mounting accessories available</i>	A = 6ft cord	Q = None	B = Black	(Blank) = No special options

80 CRI @ 4000K OR 5000K CCT					
SKU	LUMEN PACKAGE	TYPICAL DELIVERED LUMENS	TYPICAL POWER 120–277V	TYPICAL LPW 120–277V	MAX AMBIENT TEMP (°C)
93157611	1X	14,000	100W	135	40°C
	1X	21,000	150W	135	40°C
93157612	2X	28,000	200W	135	40°C
	2X	33,600	240W	135	40°C

CRI	CCT	OUTPUT MULTIPLIER
80CRI	5000K	100%
	4000K	100%

OPTICAL LENS ACCESSORY	OPTIC DESCRIPTION	OUTPUT MULTIPLIER
Refractor	Polycarbonate Refractor/Lens	98%, 93% w/Lens
Reflector	Aluminium Reflector	90%

FIELD-INSTALLABLE MOUNTING AND ACCESSORY OPTIONS

MOUNTING/ACCESSORY OPTIONS	IMAGE	ORDER SKU#	DIMENSIONS/NOTES
Safety Tether (optional)		All Wattage Ranges: 93159859 Min Order Quantity = 10	Cable length: 1m (39.4 in.) Cable Diameter: 2mm(.08 in.)
Wire Guard (optional)		150W: 93159853 200-240W: 93159854 Min Order Quantity = 10	150W: H 4.8cm (1.9 in.); Dia 26.1 cm (10.2 in.) 200-240W: H 5.2cm (2 in.); Dia 31.5cm (12.4 in.)
90° Polycarbonate Refractor (optional)		150W: 93159838 200-240W: 93159839 Min Order Quantity = 1	150W: H 16cm (6.3 in.); Dia 41cm (16.1 in.) 240W: H 16cm (6.3 in.); Dia 41cm (16.1 in.)
Polycarbonate Drop Lens (optional)		All Wattage Ranges: 93159840 Min Order Quantity = 1	Drop lens adds: H 4cm (1.6 in.)
90° Aluminum Reflector (optional)		150W: 93159851 200-240W: 93159852 Min Order Quantity = 5	150W: H 16.1cm (6.3 in.); Dia 42cm (16.5 in.) 200-240W: H 18.2cm (7.1 in.); Dia 47.3cm (18.6 in.)
Wall Mount Bracket (optional)		150W: 93159855 240W: 93159856 Min Order Quantity = 10	Total Height of assembly from top of bracket to bottom of fixture: 150W: 15cm (5.9 in.)?? 240W: 17cm (6.7 in.) ??
PIR Sensor -New (optional)		Sensor: 93159862 Remote: 93159857 Min Order Quantity = 1	Notes: 1. Easy plug-and-play install to center face of fixture; maintains IP65 rating 2. Sensor requires remote if programming is desired

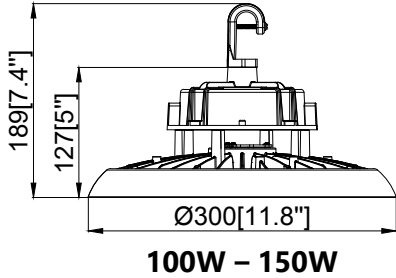
CUSTOMER NAME _____

Project Name _____

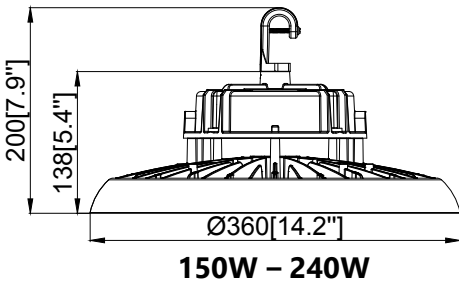
Date _____ Type _____

Catalog Number _____

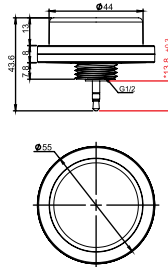
100W-150W, 120-277V, 14,000-21,000 LUMENS
WEIGHT: 2.5 KG (5.5 LBS)



150W-240W, 120-277V, 21,000-33,600 LUMENS
WEIGHT: 2.7 KG (6.0 LBS)



FIELD-INSTALLABLE SENSOR (MM)*

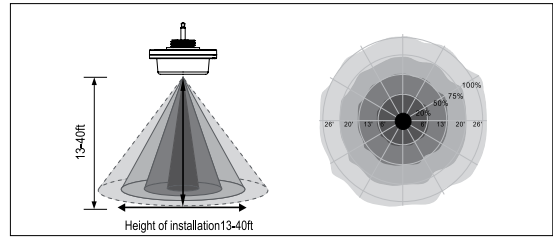


Sensor shown installed

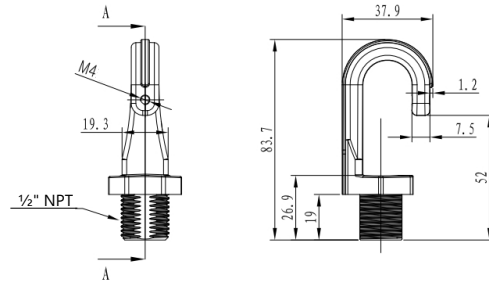


*See Page 1 for details.

SENSOR COVERAGE



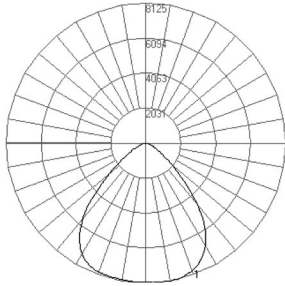
HOOK (1/2" NPT), INCLUDED (MM)



PHOTOMETRIC DATA

100-150W

14,000-21,000 Lumens



150-240W

33,600 Lumens

