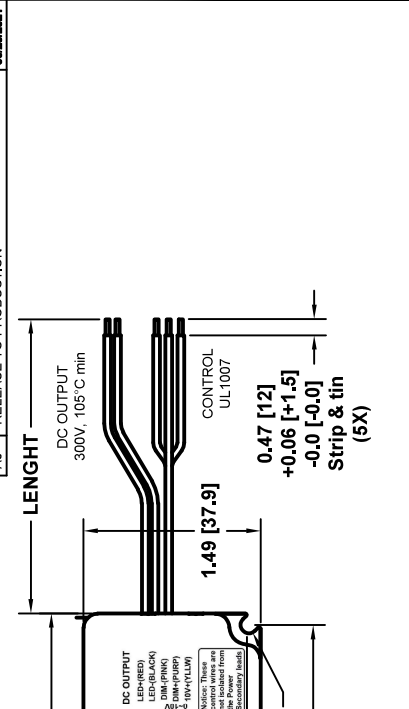
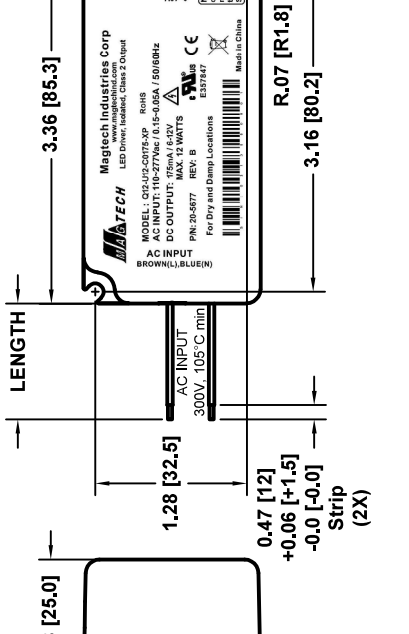


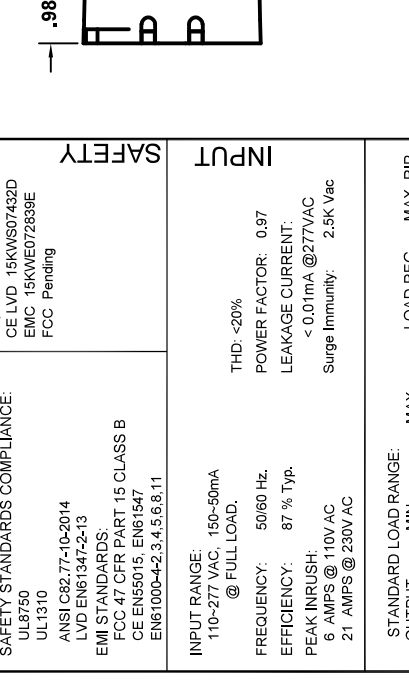
REV	DESCRIPTION	DATE
B1	CHANGED PER ECN 24-001	03/18/2024
B0	CHANGED PER ECN 21-001	07/28/2023
A1	CHANGED PER ECN 20-006	03/18/2021
A0	RELEASE TO PRODUCTION	06/28/2021



CON	PIN	COLOR	OUTPUT	AWG	LENGTH
AC	---	BROWN	LINE	18	
IN	---	BLUE	NEUTRAL	18	
DC	---	RED	+V	20	6.5 [165]
OUT	---	BLACK	GND	20	±0.5 [±13]
DIM	---	YELLOW	+10V OUT	20	
CNTRL	---	PURPLE	DIM+	20	
	---	PINK	DIM-	20	



CON	PIN	COLOR	OUTPUT	AWG	LENGTH
AC	---	BROWN	LINE	18	
IN	---	BLUE	NEUTRAL	18	
DC	---	RED	+V	20	6.5 [165]
OUT	---	BLACK	GND	20	±0.5 [±13]
DIM	---	YELLOW	+10V OUT	20	
CNTRL	---	PURPLE	DIM+	20	
	---	PINK	DIM-	20	



**SAFETY STANDARDS COMPLIANCE:**  
 UL8750  
 UL1310  
 ANSI C82.77-10-2014  
 LVD EN61347-2:13  
 EMI STANDARDS:  
 FCC 47 CFR PART 15 CLASS B  
 CE EN55015, EN61547  
 EN61000-4-2, 3, 4, 5, 6, 8, 11

**SAFETY CERTIFICATIONS**  
 UL cUL E357847  
 CE LVD 15KW(S)07432D  
 EMC 15KW(EO)72898E  
 FCC Pending

**INPUT**  
 INPUT RANGE: 110-277 VAC, 150-50mA @ FULL LOAD.  
 FREQUENCY: 50/60 Hz.  
 EFFICIENCY: 87 % Typ.  
 PEAK INRUSH: 6 AMPS @ 110V AC  
 21 AMPS @ 230V AC

**OUTPUT**  
 STANDARD LOAD RANGE: MAX 12V, MIN 6V, 175mA  
 LOAD REG. ±5%  
 MAX. RIP N/A

**MISCELLANEOUS**  
 COOLING: CONVECTION  
 NOISE LEVEL: N/A  
 RELIABILITY (MTBF): 100,000 HRS. @ 25 DEG. C @ FULL LOAD  
 ENVIRONMENTAL CONDITIONS:  
 LOWEST OPERATING TEMPERATURE: -40°C Tc=85°C  
 RELATIVE HUMIDITY: 5 ~ 95%  
 LOCATION: For Dry and Damp Use Only  
 CONNECTOR: N/A

**PROTECTION:**  
 OCP,SCP,OLP  
 AUTO-RECOVERY

**PF, THD AND EFFICIENCY CALCULATIONS ARE BASED ON THE LOADING OF THE DRIVER TO MINIMUM 65% AND MAXIMUM 100% OF 12W**

**Notes:**  
 1.- 5 yrs warr provided to point remains below 75°C  
 2.- Bar code defined by drawing 77-0120.  
 3.- Transformer - Class 130 (B). Insulation system  
 4.- Dimming: 0-10V Dimming, driver will dim to off  
 5.- Drivers comply with UL8750 Supplement SF

**Magtech Industries Corp**  
 www.magtechind.com  
 LED Driver, Isolated, Class 2 Output

**MODEL :** Q12-U12-C0175-XP  
**AC INPUT :** 110-277 Vac / 0.15-0.05A / 50/60Hz  
**DC OUTPUT :** 175mA / 6-12V  
**MAX. 12 WATTS**

**PIN:** 20-5677 **REV:** B

**AC INPUT**  
 BROWN(L),BLUE(N)

**DC OUTPUT**  
 LED+(RED)  
 LED-(BLACK)  
 DIM-(PINK)  
 DIM+(PURP)  
 10V+(YLLW)

**Notice:** These control wires are not isolated from the Power (Secondary leads)

**For Dry and Damp Locations**

**RoHS**  
 E357847

**CE**  
 E357847

**MADE IN CHINA**

**Magtech Industries Corp**  
 www.magtechind.com  
 LED Driver, Isolated, Class 2 Output

**MODEL :** Q12-U12-C0175-XP  
**AC INPUT :** 110-277 Vac / 0.15-0.05A / 50/60Hz  
**DC OUTPUT :** 175mA / 6-12V  
**MAX. 12 WATTS**

**PIN:** 20-5677 **REV:** B

**AC INPUT**  
 BROWN(L),BLUE(N)

**DC OUTPUT**  
 LED+(RED)  
 LED-(BLACK)  
 DIM-(PINK)  
 DIM+(PURP)  
 10V+(YLLW)

**Notice:** These control wires are not isolated from the Power (Secondary leads)

**For Dry and Damp Locations**

**RoHS**  
 E357847

**CE**  
 E357847

**MADE IN CHINA**

CON	PIN	COLOR	OUTPUT	AWG	LENGTH
AC	---	BROWN	LINE	18	
IN	---	BLUE	NEUTRAL	18	
DC	---	RED	+V	20	6.5 [165]
OUT	---	BLACK	GND	20	±0.5 [±13]
DIM	---	YELLOW	+10V OUT	20	
CNTRL	---	PURPLE	DIM+	20	
	---	PINK	DIM-	20	

**Magtech Industries Corp**  
 www.magtechind.com  
 LED Driver, Isolated, Class 2 Output

**MODEL :** Q12-U12-C0175-XP  
**AC INPUT :** 110-277 Vac / 0.15-0.05A / 50/60Hz  
**DC OUTPUT :** 175mA / 6-12V  
**MAX. 12 WATTS**

**PIN:** 20-5677 **REV:** B

**AC INPUT**  
 BROWN(L),BLUE(N)

**DC OUTPUT**  
 LED+(RED)  
 LED-(BLACK)  
 DIM-(PINK)  
 DIM+(PURP)  
 10V+(YLLW)

**Notice:** These control wires are not isolated from the Power (Secondary leads)

**For Dry and Damp Locations**

**RoHS**  
 E357847

**CE**  
 E357847

**MADE IN CHINA**

**Magtech Industries Corp**  
 www.magtechind.com  
 LED Driver, Isolated, Class 2 Output

**MODEL :** Q12-U12-C0175-XP  
**AC INPUT :** 110-277 Vac / 0.15-0.05A / 50/60Hz  
**DC OUTPUT :** 175mA / 6-12V  
**MAX. 12 WATTS**

**PIN:** 20-5677 **REV:** B

**AC INPUT**  
 BROWN(L),BLUE(N)

**DC OUTPUT**  
 LED+(RED)  
 LED-(BLACK)  
 DIM-(PINK)  
 DIM+(PURP)  
 10V+(YLLW)

**Notice:** These control wires are not isolated from the Power (Secondary leads)

**For Dry and Damp Locations**

**RoHS**  
 E357847

**CE**  
 E357847

**MADE IN CHINA**