

REVISIONS		
REV	DESCRIPTION	DATE
A3	CHANGED PER ECN 20-006	04/12/2021
A2	CHANGED PER ECN 16-017	12/15/2016
A1	CHANGED PER ECN 15-015	08/17/2015
A0	RELEASE TO PRODUCTION	01/30/2015

SAFETY STANDARDS COMPLIANCE:
UL8750
UL1310

LVD EN61347-2-13
EMI STANDARDS:
FCC 47 CFR PART 15 CLASS B
CE EN55015, EN61547
EN61000-4-2,3,4,5,6,8,11

SAFETY CERTIFICATIONS
UL, cUL E357847
CE LVD 15KWS07432D
EMC 15KWE072839E
FCC Pending

SAFETY

INPUT RANGE:
110-277 VAC, 300-100mA
@ FULL LOAD.

FREQUENCY: 50/60 Hz. POWER FACTOR: 0.97
EFFICIENCY: 87 % Typ. LEAKAGE CURRENT:
PEAK INRUSH: < 0.01mA @277VAC
6 AMPS @ 110V AC Surge Immunity: 2.5K Vac
21 AMPS @ 230V AC

INPUT

STANDARD LOAD RANGE:				
OUTPUT	MIN	MAX	LOAD REG	MAX. RIP
12V	208mA	2080mA	±5%	N/A

OUTPUT

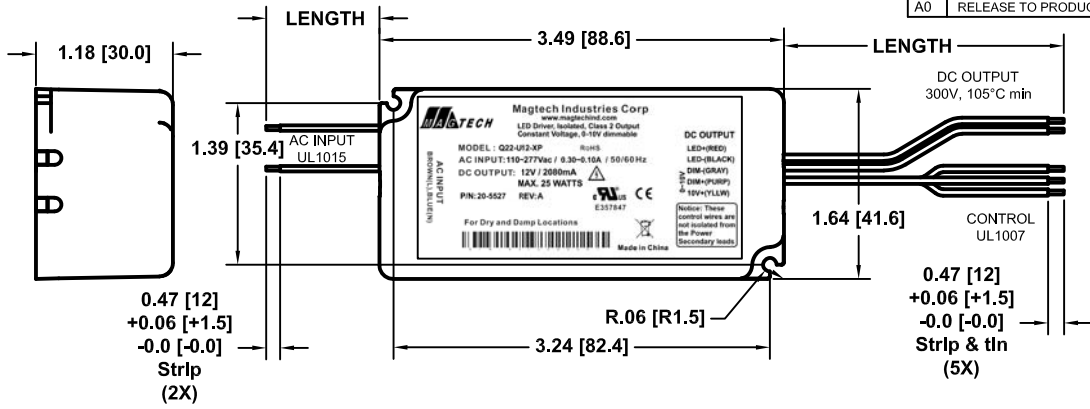
COOLING: CONVECTION **PROTECTION:**
NOISE LEVEL: N/A OCP,SCP,OLP
AUTO-RECOVERY

RELIABILITY (MTBF):
100,000 HRS. @ 25 DEG. C @ FULL LOAD

ENVIRONMENTAL CONDITIONS:
OPERATING TEMPERATURE: -40 ~ 50°C
RELATIVE HUMIDITY: 5 ~ 95%
LOCATION: For Dry and Damp Use Only

CONNECTOR:
N/A

MISCELLANEOUS



MAGTECH Magtech Industries Corp
www.magtechind.com
LED Driver, Isolated, Class 2 Output
Constant Voltage, 0-10V dimmable

MODEL : Q22-U12-XP RoHS
AC INPUT: 110-277Vac / 0.30-0.10A / 50/60Hz
DC OUTPUT: 12V / 2080mA Δ
MAX. 25 WATTS
P/N: 20-5527 **REV:** A **UL** **CE**
E357847

DC OUTPUT
LED+(RED)
LED-(BLACK)
DIM-(GRAY)
DIM+(PURP)
10V+(YLLW)
0-10V

For Dry and Damp Locations **Notice:** These control wires are not isolated from the Power Secondary leads

CON	PIN	COLOR	OUTPUT	AWG	LENGTH
AC IN	-	BROWN	LINE	20	6.5 [165]
	-	BLUE	NEUTRAL	20	
DC OUT	-	RED	+V	20	±0.5 [±13]
	-	BLACK	GND	20	
DIM CNTL	-	YELLOW	+10V OUT	20	
	-	PURPLE	DIM+	20	
	-	GRAY	DIM-	20	

- Notes:
1.- 5 yrs warr provided tc point remains below 75°C
2.- Bar code defined by drawing 77-0120.
3.- Transformer - Class 130 (B), Insulation system
4.- Drivers comply with UL8750 Supplement SF

MANUFACTURED BY:

THIS ITEM IS THE PROPERTY OF MAGTECH INDUSTRIES AND CONTAINS PROPRIETARY CONFIDENTIAL AND TRADE SECRET INFORMATION. THE INFORMATION CONTAINED HEREIN MUST NOT BE USED, DISCLOSED OR REPRODUCED IN WHOLE OR IN PART WITHOUT PRIOR WRITTEN CONSENT FROM MAGTECH INC.

MAGTECH

TITLE : Q22-U12-XP, 110-277VAC, 12V, 2080mA, 5YRS

DO NOT SCALE THIS DRAWING	APPROVAL DATE: 02/07/2015	MODEL NO. Q22-U12-XP	DWG NO. M20-5527	REV. A3	SH OF 1 1
INTERPRET DRAWING PER ANSI Y14.5M	EFFECTIVE DATE: 01/30/2015				