

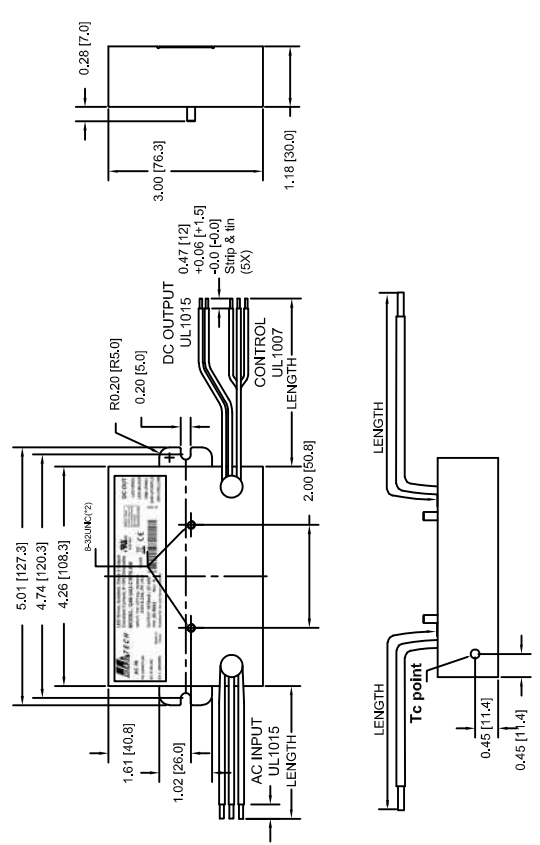
REV	DESCRIPTION	REVISIONS	DATE
BO	CHANGED PER ECN 20-006 & 21-007		01/01/2022
AU	RELEASE FOR PRODUCTION		02/08/2017

SAFETY CERTIFICATIONS	EMI STANDARDS COMPLIANCE:	SAFETY
UL E357847 dUL E357847 LVD EMC DIRECTIVE 15KWIS090065L 15KWIE092958E	LVD EN61347-2-13 FCC 47 CFR PART 15 CLASS B CE EN55015, EN61547 EN61000-4-2,3,4,5,6,8,11	

INPUT	MISCELLANEOUS
INPUT RANGE: 110 - 277 VAC 0.63 - 0.23 A @ FULL LOAD. FREQUENCY: 50 / 60 Hz. EFFICIENCY: 85 % Typ. PEAK INRUSH: 8 AMPS @ 115V AC 16 AMPS @ 230V AC	PROTECTION: OCP,SCP,OLP,OVP AUTO-RECOVERY RELIABILITY (MTBF): (MIL-HDBK-217E) 100,000 HRS. @ 25 °C @ FULL LOAD ENVIRONMENTAL CONDITIONS: OPERATING TEMPERATURE: -20 - 50°C RELATIVE HUMIDITY: 5 - 95% (NON CONDENSING) LOCATION: DRY AND DAMP USE ONLY CONNECTOR: N/A

LOAD CAPACITY:	MAX OUTPUT	MAX RIP
50 WATTS	42 Volts	60% Pk-Pk
1070mA	27 Volts	±5%

PF, THD AND EFFICIENCY CALCULATIONS ARE BASED ON THE LOADING OF THE DRIVER TO MINIMUM 65% AND MAXIMUM 100% OF 50W
Notes: 1.- 5 yrs warr provided tc point remains below 75°C 2.- Bar code defined by drawing 77-0120. 3.- Transformer - Rated Class 130 (B) insulation system 4.- Dimming: 0~10V Dimming, driver will dim to off 5.- The COB is BridgeLux BXRC-30E10K0-D-7 6.- Max Ripple Current Pk-Pk 60% 7.- Drivers comply with UL8750 Supplement SF



MAGTECH
LED Driver, Isolated, Class 2 output
Constant Current, 0-10V Dimmable
MODEL: Q48-U42-C1070-XM
INPUT: 110-277Vac, 50/60Hz
0.63-0.23, PF>0.9
OUTPUT: 1070mA / 27-42V
RoHS
PIN: 20-5662 Rev: B
Suitable for dry and damp locations

DC OUT
LED+(RED)
LED-(BLACK)
DIM+(PINK)
DIM-(PURPLE)
10V+(YELLOW)

AC IN
FG (GRN/YLW)
AC-N (BLUE)
AC-L (BROWN)

UL PLUS
ES37847
CE
RoHS
Made in China

MAGTECH
LED Driver, Isolated, Class 2 output
Constant Current, 0-10V Dimmable
MODEL: Q48-U42-C1070-XM
INPUT: 110-277Vac, 50/60Hz
0.63-0.23A, PF>0.9
OUTPUT: 1070mA / 27-42V
RoHS
PIN: 20-5662 Rev: B
Suitable for dry and damp locations

DC OUT
LED+(RED)
LED-(BLACK)
DIM+(PINK)
DIM-(PURPLE)
10V+(YELLOW)

AC IN
FG (GRN/YLW)
AC-N (BLUE)
AC-L (BROWN)

UL PLUS
ES37847
CE
RoHS
Made in China

CON	PIN	COLOR	OUTPUT	AWG	LENGTH
AC	IN	(GRN/YLW)	FG	18	
DC	OUT	BROWN	LINE	18	
		BLUE	NEUTRAL	18	6.5 [165]
		RED	+V	18	±0.5 [±13]
		BLACK	GND	18	
DIM	CNTL	YELLOW	+10V OUT	20	
		PURPLE	DIM+	20	
		PINK	DIM-	20	

MANUFACTURED BY: ES

THIS IS THE PROPERTY OF MAGTECH. NO SERIES AND CONTENTS PROPERTIES OR INFORMATION MUST BE REPRODUCED OR TRANSMITTED IN ANY FORM OR BY ANY MEANS WITHOUT THE WRITTEN CONSENT FROM MAGTECH INC.

UNLESS OTHERWISE SPECIFIED:
DIMENSIONS IN INCHES (MM)
TOLERANCES:
X.DECIMALS: .05 (.02)
XX.DECIMALS: .02 (.01)
XXX.DECIMALS: .005 (.003)
FRACTIONS: 1/16

DO NOT SCALE THE DRAWING
INTERPRET DRAWING PER
ANSI Y14.5M

APPROVAL DATE: 02/15/2017
EFFECTIVE DATE: 02/08/2017

MODEL NO:
Q48-U42-C1070-XM

DWG NO:
M20-5662

REV. BO
1 1

FORM PF-004

