

REVISIONS		
REV	DESCRIPTION	DATE
B0	CHANGED PER ECN 21-007	01/01/2022
A1	CHANGED PER ECN 20-006	01/26/2021
A0	RELEASE TO PRODUCTION	02/07/2017

SAFETY STANDARDS COMPLIANCE:
 UL8750
 UL1310

 LVD EN61347-2-13
EMI STANDARDS:
 FCC 47 CFR PART 15 CLASS B
 CE EN55015, EN61547
 EN61000-4-2,3,4,5,6,8,11

SAFETY CERTIFICATIONS
 UL E357847
 cUL E357847
 LVD
 16KWS070512D
 EMC DIRECTIVE
 17KWE074907E

INPUT RANGE:
 110 - 277 VAC
 0.88 - 0.32 A @ FULL LOAD.

FREQUENCY: 50 / 60 Hz.
EFFICIENCY: 85 % Typ.

PEAK INRUSH:
 8 AMPS @ 115V AC
 16 AMPS @ 230V AC

POWER FACTOR: >0.9
LEAKAGE CURRENT:
 0.5mA Max.

LOAD CAPACITY: 70 WATTS		LOAD REG		MAX. RIP	
OUTPUT	MIN	MAX	±5%	60% Pk-Pk	
1630mA	27 Volts	42 Volts			

COOLING: CONVECTION

NOISE LEVEL: 0 dB

RELIABILITY (MTBF): (MIL-HDBK-217E)
 100,000 HRS. @ 25 °C @ FULL LOAD

ENVIRONMENTAL CONDITIONS:

OPERATING TEMPERATURE: -20 ~ 50°C
 RELATIVE HUMIDITY: 5 ~ 95% (NON CONDENSING)
 LOCATION: DRY AND DAMP USE ONLY

CONNECTOR:
 N/A

PROTECTION:
 OCP,SCP,OLP,OV
 AUTO-RECOVERY

PF, THD AND EFFICIENCY CALCULATIONS ARE BASED ON THE LOADING OF THE DRIVER TO MINIMUM 65% AND MAXIMUM 100% OF 70W

Notes:

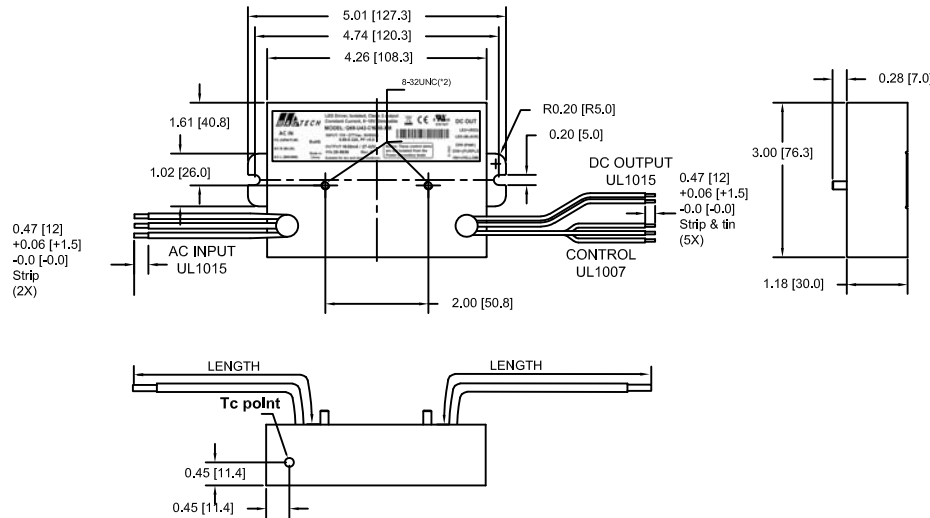
- 1.- 5 yrs warr provided tc point remains below 75°C
- 2.- Bar code defined by drawing 77-0120.
- 3.- Transformer – Rated Class 130 (B) insulation system
- 4.- Dimming: 0~10V Dimming, driver will dim to off
- 5.- The COB is BridgeLux BXRC-30E10K0-D-7
- 6.- Max Ripple Current Pk-Pk 60%
- 7.- Drivers comply with UL8750 Supplement SF

SAFETY

INPUT

OUTPUT

MISCELLANEOUS



DC OUT	LED Driver, Isolated, Class 2 output Constant Current, 0~10V Dimmable	CE	MAGTECH	AC IN
LED+(RED)	MODEL: Q68-U42-C1630-XM			FG (GRN/YLW)
LED-(BLACK)	INPUT: 110~277Vac, 50/60Hz			AC-N (BLUE)
DIM-(PINK)	0.88-0.32A, PF>0.9	RoHS		AC-L (BROWN)
DIM+(PURPLE)	OUTPUT: 1630mA / 27-42V			
10V+(YELLOW)	P/N: 20-5656 Rev: B			
	Suitable for dry and damp locations		Made in China	

Label on the opposite side

MAGTECH	LED Driver, Isolated, Class 2 output Constant Current, 0~10V Dimmable	CE	MAGTECH	DC OUT
AC IN	MODEL: Q68-U42-C1630-XM			LED+(RED)
FG (GRN/YLW)	INPUT: 110~277Vac, 50/60Hz			LED-(BLACK)
AC-N (BLUE)	0.88-0.32A, PF>0.9	RoHS		DIM-(PINK)
AC-L (BROWN)	OUTPUT: 1630mA / 27-42V			DIM+(PURPLE)
	P/N: 20-5656 Rev: B			10V+(YELLOW)
	Suitable for dry and damp locations			

Notice: These control wires are not isolated from the Power Secondary leads

Label on the studs side

CON	PIN	COLOR	OUTPUT	AWG	LENGTH
AC IN	-	(GRN/YLW)	FG	18	6.5 [165] ±0.5 [±13]
	-	BROWN	LINE	18	
	-	BLUE	NEUTRAL	18	
DC OUT	-	RED	+V	18	
	-	BLACK	GND	18	
DIM CNTL	-	YELLOW	+10V OUT	20	
	-	PURPLE	DIM+	20	
	-	PINK	DIM-	20	

MANUFACTURED BY: ES

Juno

THIS ITEM IS THE PROPERTY OF MAGTECH INDUSTRIES AND CONTAINS PROPRIETARY CONFIDENTIAL AND TRADE SECRET INFORMATION. THE INFORMATION CONTAINED HEREIN MUST NOT BE USED, DISCLOSED OR REPRODUCED IN WHOLE OR IN PART WITHOUT PRIOR WRITTEN CONSENT FROM MAGTECH INC.

UNLESS OTHERWISE SPECIFIED

QC:
 DIMENSIONS IN INCHES (MM)
 TOLERANCES:
 .X DECIMALS± .05 (1.3)
 .XX DECIMALS± .02 (0.5)
 .XXX DECIMALS± .005 (0.13)
 ANGLES± 1°
 FRACTIONS± 1/16



TITLE:
 Q68-U42-C1630-XM, CN-0197, 110-277VAC, 1630mA, 27-42V

DO NOT SCALE THIS DRAWING
 INTERPRET DRAWING PER
 ANS I Y14.5M

APPROVAL DATE: 02/14/2017
 EFFECTIVE DATE: 02/07/2017

MODEL NO.
 Q68-U42-C1630-XM

DWG NO.
 M20-5656

REV. B0
 SH OF
 1 1