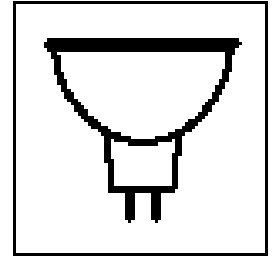


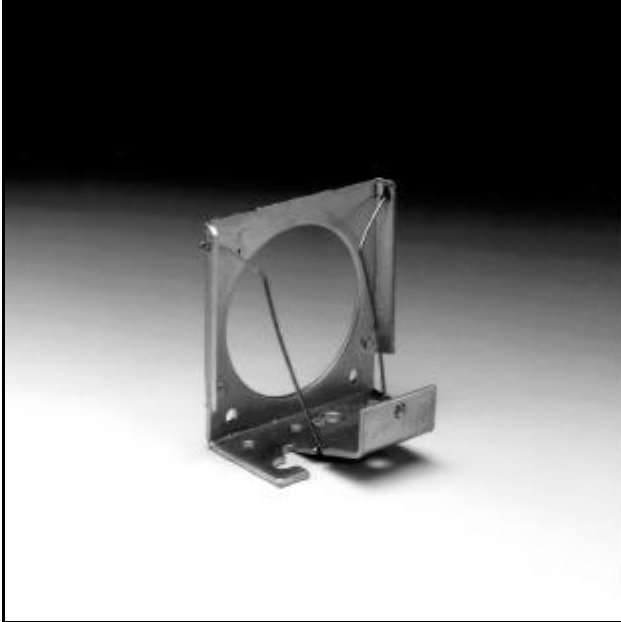


MR-16 LAMPS WITH REFLECTORS

2.00"/50 MM DIAMETER



MR-16 RIM MOUNT



QEX-1 O, 1 1

The QEX Rim Mount Lampholder is designed to the ANSI Codes and International Standards. Lampholders are UL and CSA recognized.

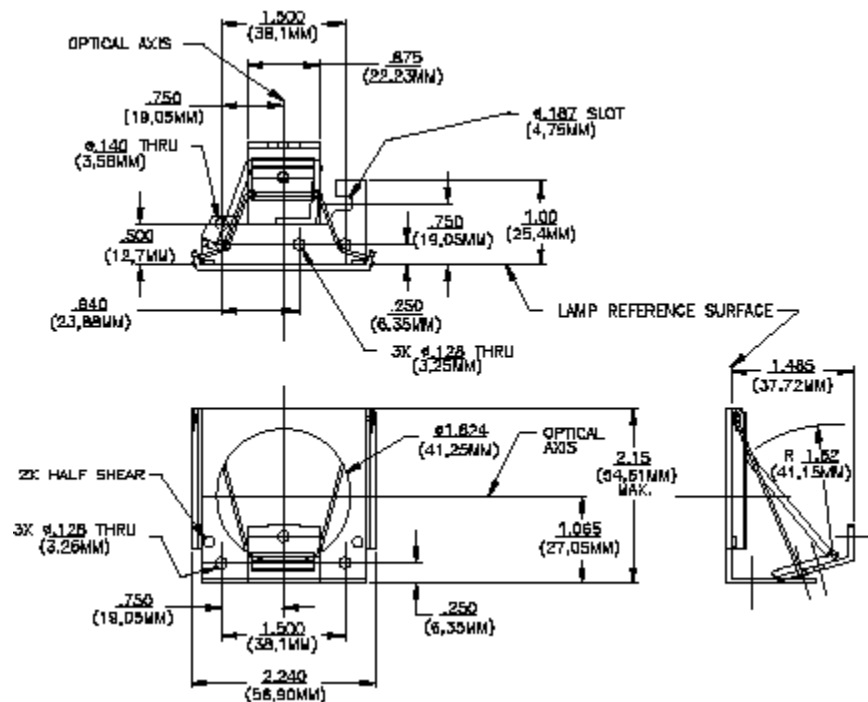
For MR-16 Lamp Type with Reflectors.

Features:

Construction: Nickel Plated Steel Housing
Bright Finish Retaining Spring

QEX-1 O

Note: For 100 watts and greater, forced air cooling is required to prevent socket damage. Consult factory for assistance.



QEX-1 O, 1 1
& RETAINING PLATE
NOT SHOWN DOTTED
OPTIONAL EJECTOR AVAILABLE