



CRI / R9	95+/85+
Lumens per foot	~480lm/ft
LEDs per foot	72 LEDs/ft
Cut Lengths	1"(25.4mm)
Watts per foot	7W/ft
Input Voltage	24V DC
Luminous Efficiency	66-75lm/W
Tape Width	0.4"(10mm)



- CCT option from 2000K to 4000K
- High color rendering index (CRI), Ra max. 95+, and R9 85+
- Title 24 compliant
- High efficacy lumen output (70 lm/W)
- UL Registered

FEATURES

- LM80 compliant LEDs
- Tight binning less than 3 Mac Adam Ellipses
- Uniform linear light output
- High efficacy LED tape
- 50,000 hour rating

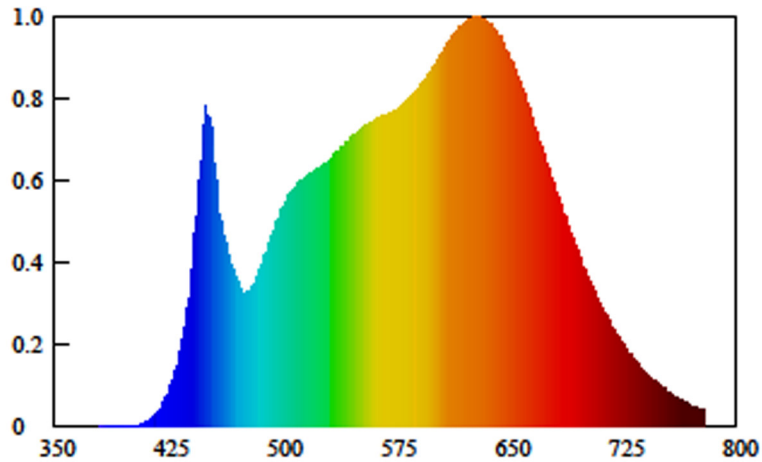
MODEL SPECIFICATIONS

Model Number	Input Voltage	CCT	lm/m	W/m	lm/W
QLUXF50001200LED920	24V DC	2000K	1100 lm/m	23 W/m	65 lm/W
QLUXF50001200LED922	24V DC	2200K	1200 lm/m	23 W/m	75 lm/W
QLUXF50001200LED925	24V DC	2500K	1300 lm/m	23 W/m	66 lm/W
QLUXF50001200LED927	24V DC	2700K	1400 lm/m	23 W/m	68 lm/W
QLUXF50001200LED930	24V DC	3000K	1450 lm/m	23 W/m	74 lm/W
QLUXF50001200LED935	24V DC	3500K	1500 lm/m	23 W/m	75 lm/W
QLUXF50001200LED932	24V DC	3200K	1450 lm/m	23 W/m	75 lm/W
QLUXF50001200LED940	24V DC	4000K	1500 lm/m	23 W/m	76 lm/W

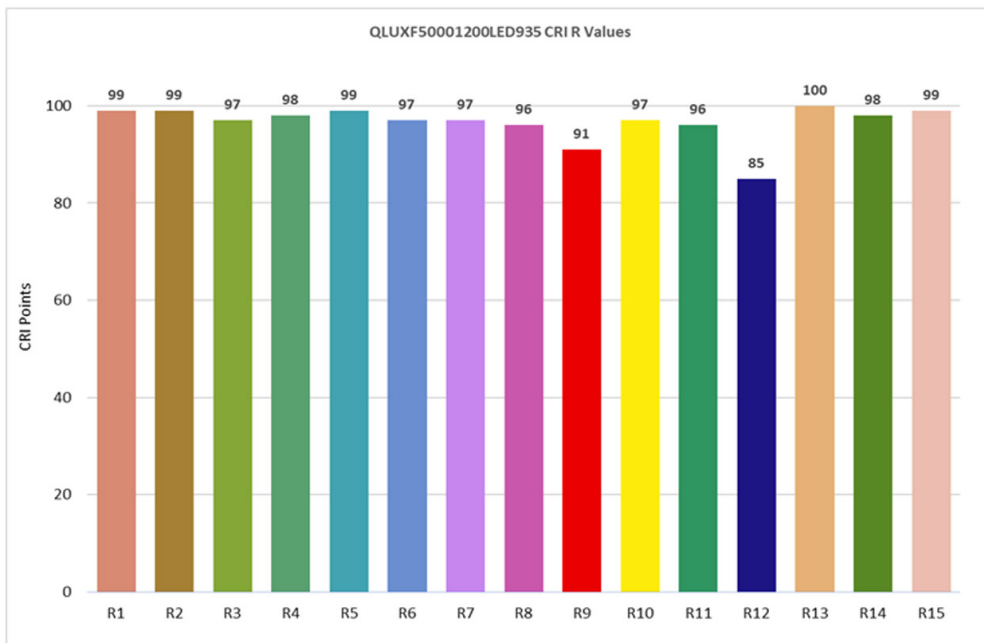
QLUXF50001200KLED 2000K-4000K SERIES

Architectural Grade Single CCT Tape

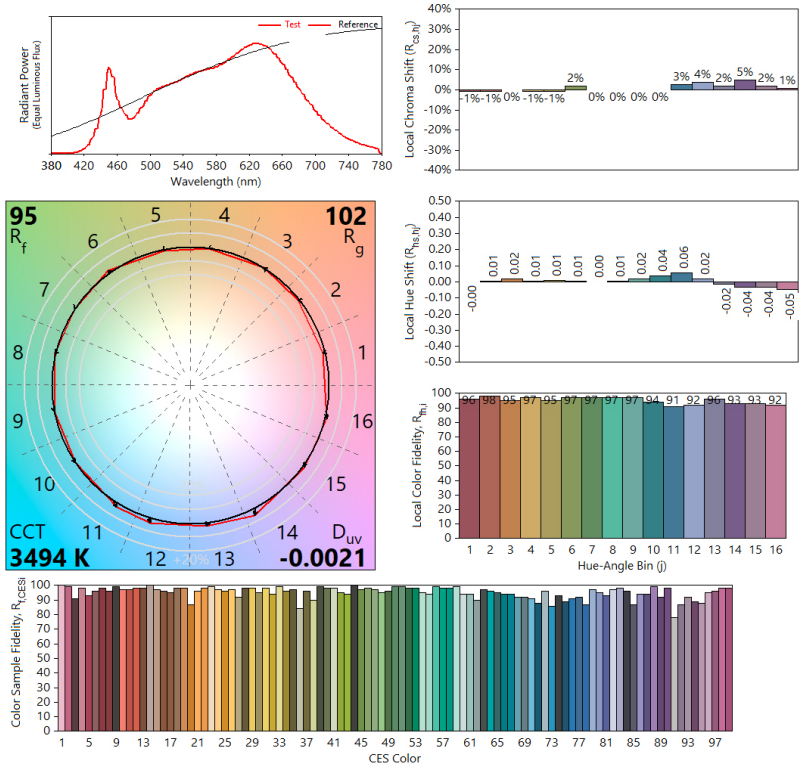
SPECTRORADIOMETRIC CHART



CRI CHART



TM-30 CHART








Parameter		Rated Value	Unit
Forward Voltage DC	VF	24VDC	V
Forward Current	IF	290	mA/12"
Power	PD	7	W/12"
CRI	Ra	+95	
Luminous Flux	Φ	480lm	Lm (12")
PCB Width	W	10	mm
Copper Thickness	T	3	OZ
Min. Element Size	L	25.4	mm
Min. Buckling Radius	R	≥ 50	mm
Angle	2θ½	120	deg
Static Electricity	ESD	800	V
Junction Temperature	Tj	115	°C
IP Grade	IP	IP20 not waterproof	/
LED Color Temperature	CCT	2200K/2500K/2700K/3000K/3200K/4000K	K
LED Brightness	LM	22lm/LED	LM

RECOMMENDED LTF DRIVER

MODEL NUMBER	WATTS	OUTPUT VOLTAGE
DS96W24VBR1UD-3002	96W	24V Constant Voltage

For tape lengths less than full 5M reel, use appropriate LTF 24V drivers to match tape load power rating under worse scenarios.

LED TAPE CONNECTORS

MODEL NUMBER	DESCRIPTION	
300-0035	Type "I" Tape to Tape snap connector	
300-0036	Type "I" 2 PIN Tape to Power snap connector with 6" inch wire	
300-0037	Type "I" 2 PIN Tape to Tape snap connector with 6" inch wire	
300-0038	Type "I" Tape to Tape screw connector	
300-0039	Type "L" Tape to Tape screw connector	

MECHANICAL SPECS

