

REVISIONS		
REV	DESCRIPTION	DATE
C1	CHANGED PER ECN NECN1208-00001	11/01/2024
C0	CHANGED PER ECN 24-001, 24-002, 24-008 & 24-010	07/12/2024
B0	CHANGED PER ECN 21-001	12/15/2021
A1	CHANGE DIM WIRES GAUGE TO 22AWG	10/20/2020
A0	RELEASE TO PRODUCTION	08/03/2020

SAFETY STANDARDS COMPLIANCE:
UL8750
UL1310

LVD EN61347-2-13

EMI STANDARDS:
FCC 47 CFR PART 15 CLASS B
CE EN55015, EN61547
EN61000-4-2,3,4,5,6,8,11

SAFETY CERTIFICATIONS
UL, cUL E357847
LVD 23AS100743S347A002
EMC E04A23100743E00101
FCC 24AE040887F001

INPUT RANGE:
100-277 VAC, 0.5-0.18A @ FULL LOAD.

FREQUENCY: 50/60 Hz.

EFFICIENCY: 87 % Typ.

PEAK INRUSH (NEMA 410):
I_t=0.00053 A sec @110Vac
I_t=0.007526 A sec @277Vac

THD<20%

POWER FACTOR: 0.97

LEAKAGE CURRENT:
< 0.01mA @277VAC

Surge Immunity: 2.5K Vac

Absolute maximum rating: 40W

OUT #	TYPE	OUTPUT	MAX	LOAD REG	MAX. RIP
#1	CV	24V	1660mA	±5%	10%

COOLING: CONVECTION

NOISE LEVEL: N/A

RELIABILITY (MTBF):
100,000 HRS. @ 25 DEG. C @ FULL LOAD

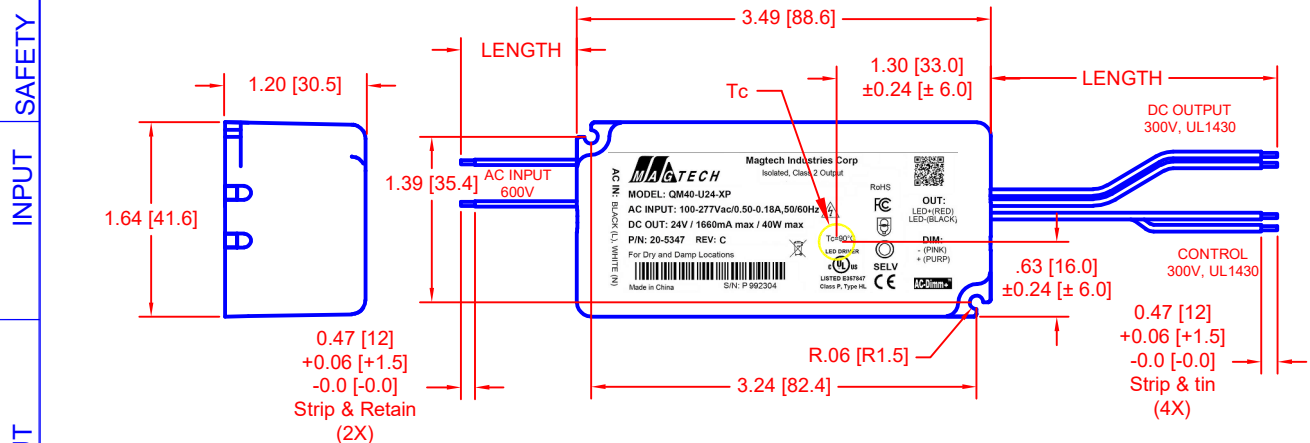
ENVIRONMENTAL CONDITIONS:
LOWEST OPERATING TEMPERATURE: -40°C: Tc=90°C
RELATIVE HUMIDITY: 5 ~ 95%
LOCATION: For Dry and Damp Use Only

CONNECTOR:
N/A

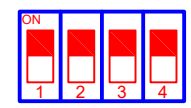
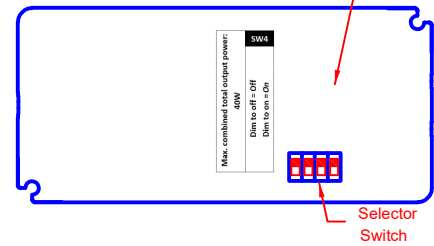
PROTECTION:
SCP,O LP,OVP
AUTO-RECOVERY

PF, THD AND EFFICIENCY CALCULATIONS ARE BASED ON THE LOADING OF THE DRIVER TO MINIMUM 65% AND MAXIMUM 100% OF 40W

- Notes:**
- 5 yrs warr provided Tc point remains below 80°C
 - Low flickering – Less than 10% up to 120Hz
 - Dimming: 0-10V Dimming, driver will dim to on.
 - 4 in 1 dimming – TRIAC / ELV / 0-10V / PWM
 - These LED drivers are suitable for factory wiring only.
 - These LED drivers shall be enclosed on the end product.
 - These LED drivers have been evaluated to Class 2 output requirement.
 - These LED drivers meet the requirements identified as Type HL. Drivers may be used on a Class I, Division 2 hazardous (Classified) location luminaires (Per UL 8750, Supplement SB).
 - These LED drivers meet the requirements identified as Class P (Per UL 8750, Supplement SE).
 - These LED drivers meet the requirements identified as Phase-cut Dimming (Per UL 8750, Supplement SH).
 - These LED drivers complies with Low-Voltage Limited-Energy LED Class 2 characteristics.
 - Wired control circuits are isolated (Per UL 8750, Supplement SF).



Max. combined total output power:
40W
SW4
Dim to off = Off
Dim to on = On



Selector Switch (ON as default)

MAGTECH
Magtech Industries Corp
Isolated, Class 2 Output

MODEL: QM40-U24-XP
AC INPUT: 100-277Vac/0.50-0.18A,50/60Hz
DC OUT: 24V / 1660mA max / 40W max
P/N: 20-5347 REV: C

For Dry and Damp Locations

Tc=90°C
LED DRIVER

UL US
LISTED E357847
Class P, Type HL

RoHS
FCC
SELV
CE
AC-Dimm

OUT:
LED+(RED)
LED-(BLACK)

DIM:
- (PINK)
+ (PURP)

AC IN: BLACK (L), WHITE (N)

Made in China S/N: P 992304

CON	PIN	COLOR	OUTPUT	AWG	LENGTH
AC IN	---	BLACK	LINE	18	6.5 [165] ±0.5 [±13]
IN	---	WHITE	NEUTRAL	18	
DC	---	RED	+V	18	6.5 [165] ±0.5 [±13]
OUT	---	BLACK	GND	18	
DIM	---	PURPLE	DIM+	22	6.5 [165] ±0.5 [±13]
CNTL	---	PINK	DIM-	22	

MANUFACTURED BY: ES

THIS ITEM IS THE PROPERTY OF MAGTECH INDUSTRIES AND CONTAINS PROPRIETARY CONFIDENTIAL AND TRADE SECRET INFORMATION. THE INFORMATION CONTAINED HEREIN MUST NOT BE USED, DISCLOSED OR REPRODUCED IN WHOLE OR IN PART WITHOUT PRIOR WRITTEN CONSENT FROM MAGTECH IND.

UNLESS OTHERWISE SPECIFIED
DIMENSIONS IN INCHES (MM)
TOLERANCES:
X: DECIMALS: .05 [1.3]
XX: DECIMALS: .02 [0.5]
XXX: DECIMALS: .006 [0.15]
ANGLES: 1°
FRACTIONS: 1/16

QC:

TITLE:
QM40-U24-XP, 100-277VAC, 24V, 1660mA, 40W MAX

DO NOT SCALE THIS DRAWING
INTERPRET DRAWING PER ANSI Y14.5M

APPROVAL DATE: 08/08/2020
EFFECTIVE DATE: 07/20/2020

MODEL NO.
QM40-U24-XP

DWG NO.
M20-5347

REV. C1

SH OF 1 1

FORM PF-0004