

REVISIONS		
REV	DESCRIPTION	DATE
C1	CHANGED PER ECN 24-015	07/24/2024
C0	CHANGED PER ECN 24-001, 24-008 & 24-010	06/14/2024
B1	ADD FCC COMPLIANCE AND PER ECN 24-002	04/10/2023
B0	CHANGED PER ECN 23-001	03/20/2023
A1	CHANGE MAX OUT VOLT TO 48 FOR CURR<=700mA	10/24/2022
A0	RELEASE TO PRODUCTION	10/03/2022

**SAFETY STANDARDS COMPLIANCE:**  
UL8750  
UL1310

LVD EN61347-2-13

**EMI STANDARDS:**  
FCC 47 CFR PART 15 CLASS B  
CE EN55015, EN61547  
EN61000-4-2,3,4,5,6,8,11

**SAFETY CERTIFICATIONS**  
UL, cUL E357847  
LVD 23AS100743S347A002  
EMC E04A23100743E00101  
FCC 24AE040887F001

**INPUT RANGE:**  
100~277 VAC, 0.5-0.18A @ FULL LOAD.

**FREQUENCY:** 50/60 Hz.

**EFFICIENCY:** 87 % Typ.

**PEAK INRUSH (NEMA 410):**  
I<sub>t</sub>=0.00053 A sec @110Vac  
I<sub>t</sub>=0.007526 A sec @277Vac

THD<20%

POWER FACTOR: 0.97

LEAKAGE CURRENT:  
< 0.01mA @277VAC

Surge Immunity: 2.5K Vac

Absolute maximum rating: 40W

OUT #	TYPE	OUTPUT	MIN	MAX	LOAD REG	MAX RIP
1	CC	1050mA	9V	48V	±5%	10%

Note for CC output:  
Actual output current depends on the selector switch

**COOLING:** CONVECTION

**NOISE LEVEL:** N/A

**RELIABILITY (MTBF):**  
100,000 HRS. @ 25 DEG. C @ FULL LOAD

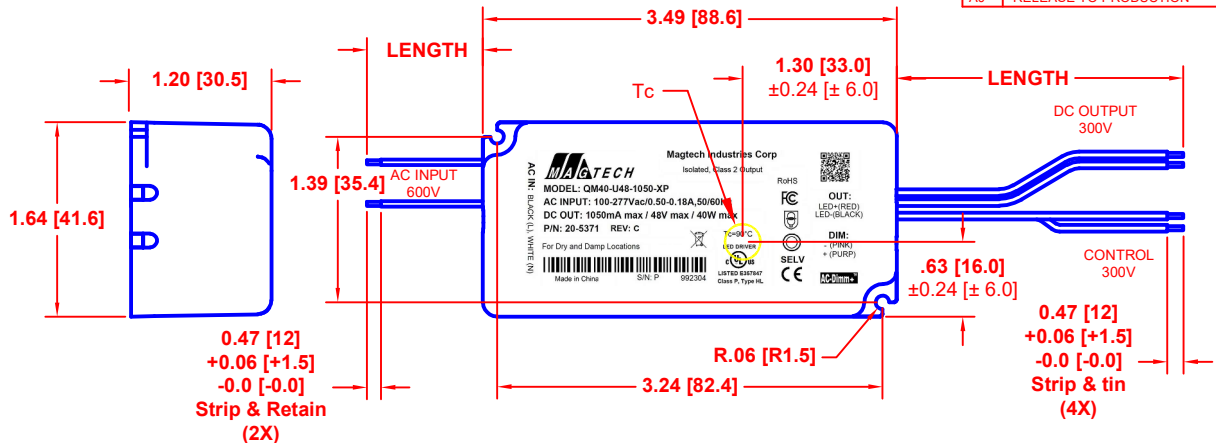
**PROTECTION:**  
SCP,OLP,OVP  
AUTO-RECOVERY

**ENVIRONMENTAL CONDITIONS:**  
LOWEST OPERATING TEMPERATURE: -40°C: Tc=90°C  
RELATIVE HUMIDITY: 5 ~ 95%  
LOCATION: For Dry and Damp Use Only

**CONNECTOR:**  
N/A

PF, THD AND EFFICIENCY CALCULATIONS ARE BASED ON THE LOADING OF THE DRIVER TO MINIMUM 65% AND MAXIMUM 100% OF 40W

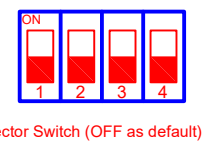
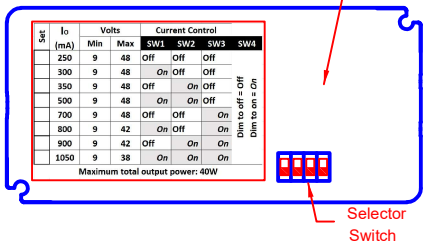
- Notes:**
- 5 yrs warr provided Tc point remains below 80°C
  - Low flickering – Less than 10% up to 120Hz
  - Dimming: 0-10V Dimming, driver will dim to off.
  - 4 in 1 dimming – TRIAC / ELV / 0-10V / PWM
  - These LED drivers are suitable for factory wiring only.
  - These LED drivers shall be enclosed on the end product.
  - These LED drivers have been evaluated to Class 2 output requirement.
  - These LED drivers meet the requirements identified as Type HL. Drivers may be used on a Class I, Division 2 hazardous (Classified) location luminaires (Per UL 8750, Supplement SB).
  - These LED drivers meet the requirements identified as Class P (Per UL 8750, Supplement SE).
  - These LED drivers meet the requirements identified as Phase-cut Dimming (Per UL 8750, Supplement SH).
  - These LED drivers complies with Low-Voltage Limited-Energy LED Class 2 characteristics.
  - Wired control circuits are isolated (Per UL 8750, Supplement SF).
  - Driver fold back temperature (T<sub>c</sub>): 105°C±5°C  
Fold back drive current: 125mA±12mA  
Recovery temperature (T<sub>c</sub>): 75°C±5°C



Set	I <sub>o</sub> (mA)	Volts		Current Control			
		Min	Max	SW1	SW2	SW3	SW4
	250	9	48	Off	Off	Off	
	300	9	48	On	Off	Off	
	350	9	48	Off	On	Off	
	500	9	48	On	On	Off	
	700	9	48	Off	Off	On	
	800	9	42	On	Off	On	
	900	9	42	Off	On	On	
	1050	9	38	On	On	On	

Dim to off = Off  
Dim to on = On

Maximum total output power: 40W



**MAGTECH**  
Magtech Industries Corp  
Isolated, Class 2 Output

MODEL: QM40-U48-1050-XP  
AC INPUT: 100-277Vac/0.50-0.18A,50/60Hz  
DC OUT: 1050mA max / 48V max / 40W max  
P/N: 20-5371 REV: C

RoHS  
FCC  
UL  
SELV  
CE  
LISTED E357847  
Class P, Type HL

OUT: LED+(RED) LED-(BLACK)  
DIM: - (PINK) + (PURP)  
AC Dimm+

Tc=90°C  
LED DRIVER

For Dry and Damp Locations

Made in China S/N: P 992304

CON	PIN	COLOR	OUTPUT	AWG	LENGTH
AC	---	BLACK	LINE	18	6.5 [165] ±0.5 [±13]
IN	---	WHITE	NEUTRAL	18	
DC	---	RED	+V	20	
OUT	---	BLACK	GND	20	
DIM	---	PURPLE	DIM+	22	
CNTL	---	PINK	DIM-	22	

**MANUFACTURED BY:**

THIS ITEM IS THE PROPERTY OF MAGTECH INDUSTRIES AND CONTAINS PROPRIETARY CONFIDENTIAL AND TRADE SECRET INFORMATION. THE INFORMATION CONTAINED HEREIN MUST NOT BE USED, DISCLOSED OR REPRODUCED IN WHOLE OR IN PART WITHOUT PRIOR WRITTEN CONSENT FROM MAGTECH IND.

UNLESS OTHERWISE SPECIFIED  
DIMENSIONS IN INCHES [MM]  
TOLERANCES:  
X: DECIMALS: .05 [1.3]  
XX: DECIMALS: .02 [0.5]  
XXX: DECIMALS: .006 [0.15]  
ANGLES: 1°  
FRACTIONS: 1/16

QC:

**MAGTECH**

TITLE:  
QM40-U48-1050-XP, CN-0403, 100-277VAC, 1050mA, 48V, 40W MAX

APPROVAL DATE: 10/04/2022  
EFFECTIVE DATE: 09/30/2022

MODEL NO. QM40-U48-1050-XP  
DWG NO. M20-5371  
REV. C1  
SH OF 1 1

205371C1M1.DWG  
FORM PF-0004