

REVISIONS		
REV	DESCRIPTION	DATE
B0	CHG PER ECN 24-008, 010, 022 & NECN1208-00001	11/01/2024
A2	ADD FCC COMPLIANCE	04/11/2024
A1	REMOVE +12V AUXILIARY SUPPLY	03/28/2024
A0	RELEASE TO PRODUCTION	03/25/2024

SAFETY STANDARDS COMPLIANCE:
UL 8750
UL 1310

LVD EN61347-2-13

EMI STANDARDS:
FCC 47 CFR PART 15 CLASS B
CE EN55015, EN61547
EN61000-4-2,3,4,5,6,8,11

SAFETY CERTIFICATIONS
UL, cUL E357847
LVD 23AS100743S347A004
EMC E04A23100743E00301
FCC 24AE040887F002

INPUT RANGE:
100-277 VAC, 0.5-0.18A @ FULL LOAD.

FREQUENCY: 50/60 Hz.

EFFICIENCY: 87 % Typ.

PEAK INRUSH (NEMA 410):
I_t=0.00192 A²sec @110Vac
I_t=0.0073 A²sec @277Vac

THD<20%

POWER FACTOR: 0.97

LEAKAGE CURRENT:
< 0.01mA @277VAC

Surge Immunity: 2.5K Vac

Absolute maximum rating: 50W

OUT #	TYPE	OUTPUT	MIN	MAX	LOAD REG	MAX RIP
#1	CC	350mA	20V	48V	±5%	10%
#2	CC	350mA	20V	48V	±5%	10%

Note for CC output:
Actual output current depends on the selector switch

COOLING: CONVECTION

NOISE LEVEL: N/A

RELIABILITY (MTBF):
100,000 HRS. @ 25 DEG. C @ FULL LOAD

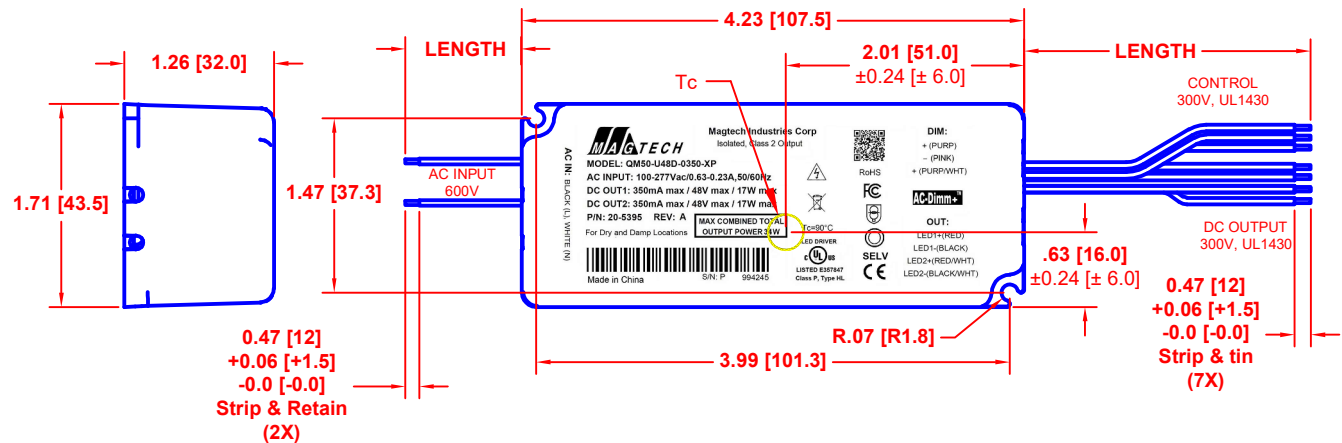
ENVIRONMENTAL CONDITIONS:
LOWEST OPERATING TEMPERATURE: -40°C: Tc=90°C
RELATIVE HUMIDITY: 5 ~ 95%
LOCATION: For Dry and Damp Use Only

CONNECTOR:
N/A

PROTECTION:
SCP, OLP, OVP
AUTO-RECOVERY

PF, THD AND EFFICIENCY CALCULATIONS ARE BASED ON THE LOADING OF THE DRIVER TO MINIMUM 65% AND MAXIMUM 100% OF 34W

- Notes:**
- 5 yrs warr provided Tc point remains below 80°C
 - Low flickering – Less than 10% up to 120Hz
 - Dimming: 0-10V Dimming, driver will dim to off.
 - 4 in 1 dimming – TRIAC / ELV / 0-10V / PWM
 - These LED drivers are suitable for factory wiring only.
 - These LED drivers shall be enclosed on the end product.
 - These LED drivers have been evaluated to Class 2 output requirement.
 - These LED drivers meet the requirements identified as Type HL. Drivers may be used on a Class I, Division 2 hazardous (Classified) location luminaires (Per UL 8750, Supplement SB).
 - These LED drivers meet the requirements identified as Class P (Per UL 8750, Supplement SE).
 - These LED drivers meet the requirements identified as Phase-cut Dimming (Per UL 8750, Supplement SH).
 - These LED drivers complies with Low-Voltage Limited-Energy LED Class 2 characteristics.
 - Wired control circuits are isolated (Per UL 8750, Supplement SF).

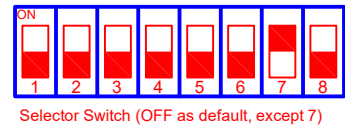
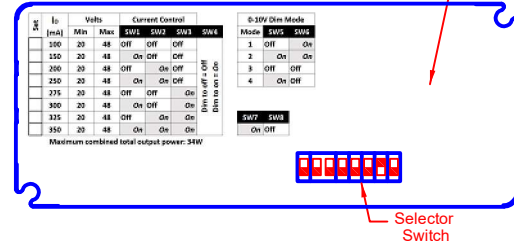


Set	I _o (mA)	Volts	Current Control				0-10V Dim Mode		
			SW1	SW2	SW3	SW4	Mode	SW5	SW6
100	20	48	Off	Off	Off	Off	1	Off	On
150	20	48	On	Off	Off	Off	2	On	On
200	20	48	Off	On	Off	Off	3	Off	Off
250	20	48	On	On	Off	Off	4	On	Off
275	20	48	Off	Off	On	On			
300	20	48	On	Off	On	On			
325	20	48	Off	On	On	On			
350	20	48	On	On	On	On			

Dim to off = Off
Dim to on = On

SW7 SW8
On Off

Maximum combined total output power: 34W



MAGTECH Magtech Industries Corp
Isolated, Class 2 Output

MODEL: QM50-U48D-0350-XP
AC INPUT: 100-277Vac/0.63-0.23A, 50/60Hz
DC OUT1: 350mA max / 48V max / 17W max
DC OUT2: 350mA max / 48V max / 17W max
P/N: 20-5395 REV: A
MAX COMBINED TOTAL OUTPUT POWER 34W

AC IN: BLACK (L), WHITE (N)

Tc=90°C
LED DRIVER
LISTED E357847 Class P, Type HL

RoHS
FCC
UL
SELV
CE

DIM:
+ (PURP)
- (PINK)
+ (PURP/WHT)

AC-Dimm+

OUT:
LED1+(RED)
LED1-(BLACK)
LED2+(RED/WHT)
LED2-(BLACK/WHT)

CON	PIN	COLOR	OUTPUT	AWG	LENGTH
AC	--	BLACK	LINE	18	
IN	--	WHITE	NEUTRA	18	
OUTPUT	LED1	RED	+	18	6.5 [165] ±0.5 [±13]
	LED2	RED/WHT	+	18	
DIM	CNTL1+	PURPLE	+	22	
	Dim-	PINK	-	22	
	CNTL2+	PURP/WHT	+	22	

MANUFACTURED BY:

THIS ITEM IS THE PROPERTY OF MAGTECH INDUSTRIES AND CONTAINS PROPRIETARY CONFIDENTIAL AND TRADE SECRET INFORMATION. THE INFORMATION CONTAINED HEREIN MUST NOT BE USED, DISCLOSED OR REPRODUCED IN WHOLE OR IN PART WITHOUT PRIOR WRITTEN CONSENT FROM MAGTECH IND.

UNLESS OTHERWISE SPECIFIED
DIMENSIONS IN INCHES [MM]
TOLERANCES:
X: DECIMALS: .05 [1.3]
XX: DECIMALS: .02 [0.5]
XXX: DECIMALS: .006 [0.15]
ANGLES: 1°
FRACTIONS: 1/16

QC:

MAGTECH

TITLE:
QM50-U48D-0350-XP, CN-0422, 100-277VAC, 350mA, 48V, 34W MAX

APPROVAL DATE: 03/28/2024
EFFECTIVE DATE: 03/28/2024

MODEL NO.
QM50-U48D-0350-XP

DWG NO.
M20-5395

REV. B0

SH OF
1 1

205395B0M1.DWG
FORM PF-004